



Europäisches Patentamt
 Eur pean Patent Office
 Office europé n des brevets



Publication number: **0 175 617 B1**

12

EUROPEAN PATENT SPECIFICATION

45 Date of publication of patent specification: 30.10.91 51 Int. Cl.⁵: **A61K 39/395**

21 Application number: **85401776.1**

22 Date of filing: **13.09.85**

54 **Antibody-therapeutic agent conjugates.**

30 Priority: **13.09.84 US 650754**
13.09.84 US 650375

43 Date of publication of application:
26.03.86 Bulletin 86/13

45 Publication of the grant of the patent:
30.10.91 Bulletin 91/44

84 Designated Contracting States:
AT BE CH DE FR GB IT LI LU NL SE

58 References cited:
EP-A- 0 088 695

The Journal of Immunology, vol. 130, no. 3, March 1983, pages 1473-1477 American Association of Immunologists, US; D. Mew et al.: "Photoimmunotherapy: treatment of animal tumors with tumor-specific monoclonal antibody-hematoporphyrin conjugates"

Chemical Abstracts, vol. 82, no. 3, 20th January 1975, page 361, abstract no. 15067u, Columbus, Ohio, US; W.T. Shearer et al.: "Cytotoxicity with antibody-glucose oxidase conjugates specific for a human colonic cancer and carcinoembryonic antigen", & Int.J. Cancer 1974,14(4), 539-47

73 Proprietor: **CYTOGEN CORPORATION**
201 College Road East Forrester Research Center
Princeton New Jersey 08540(US)

72 Inventor: **Goers, John Walter**
5200 Dolores Street
Atascadero California(US)
 Inventor: **Lee, Chyl**
1347 Ute Road
New Brunswick New Jersey(US)
 Inventor: **Siegel, Richard Charles**
117 Whiton Road
Neshanic Station New Jersey(US)
 Inventor: **McKearn, Thomas Joseph**
R.D. No. 3 Box 119
New Hope Pennsylvania(US)
 Inventor: **King, Hurley Dalton**
1688-B Bluebird Drive
Yardley Pennsylvania(US)
 Inventor: **Coughlin, Daniel James**
37-07 Hunters
Plainsboro New Jersey(US)
 Inventor: **Rodwell, John Dennis**
430 Ramsey Road
Yardley Pennsylvania(US)

EP 0 175 617 B1

Note: Within nine months from the publication of the mention of the grant of the European patent, any person may give notice to the European Patent Office of opposition to the European patent granted. Notice of opposition shall be filed in a written reasoned statement. It shall not be deemed to have been filed until the opposition fee has been paid (Art. 99(1) European patent convention).

PCTWELTORGANISATION FÜR GEISTIGES EIGENTUM
Internationales BüroINTERNATIONALE ANMELDUNG VERÖFFENTLICHT NACH DEM VERTRAG ÜBER DIE
INTERNATIONALE ZUSAMMENARBEIT AUF DEM GEBIET DES PATENTWESENS (PCT)

<p>(51) Internationale Patentklassifikation ⁷ : H01S 5/18</p>	<p>A1</p>	<p>(11) Internationale Veröffentlichungsnummer: WO 00/52793</p> <p>(43) Internationales Veröffentlichungsdatum: 8. September 2000 (08.09.00)</p>
<p>(21) Internationales Aktenzeichen: PCT/DE00/00543</p> <p>(22) Internationales Anmeldedatum: 25. Februar 2000 (25.02.00)</p> <p>(30) Prioritätsdaten: 199 08 426.2 26. Februar 1999 (26.02.99) DE</p> <p>(71) Anmelder (für alle Bestimmungsstaaten ausser US): INFINEON TECHNOLOGIES AG [DE/DE]; St.-Martin-Str. 53, D-81541 München (DE).</p> <p>(72) Erfinder; und (75) Erfinder/Anmelder (nur für US): WIPIJEWSKI, Torsten [DE/DE]; Hombergerweg 2, D-93049 Regensburg (DE).</p> <p>(74) Gemeinsamer Vertreter: INFINEON TECHNOLOGIES AG; Zedlitz, Peter, Postfach 22 13 17, D-80503 München (DE).</p>		<p>(81) Bestimmungsstaaten: JP, US, europäisches Patent (AT, BE, CH, CY, DE, DK, ES, FI, FR, GB, GR, IE, IT, LU, MC, NL, PT, SE).</p> <p>Veröffentlicht <i>Mit internationalem Recherchenbericht. Vor Ablauf der für Änderungen der Ansprüche zugelassenen Frist; Veröffentlichung wird wiederholt falls Änderungen eintreffen.</i></p>
<p>(54) Title: VERTICAL RESONATOR LASER DIODE WITH A LIGHT ABSORBING LAYER</p>		
<p>(54) Bezeichnung: VERTIKALRESONATOR-LASERDIODE MIT EINER LICHTABSORBIERENDEN SCHICHT</p>		
<p>(57) Abstract</p>		
<p>The invention relates to a vertical resonator laser diode (10, 20). An active series of layers (3) is arranged between a first Bragg reflector layer series (2) and a second Bragg reflector layer series (4) in order to produce laser irradiation. Each Bragg reflector layer series is provided with a plurality of mirror pairs (22, 44). The two Bragg reflector layer series (2, 4) form a laser resonator. The two Bragg reflector layer series (2, 4) and the active series of layers (3) are arranged between a first (7) and a second electrical contact layer (8). One (4) of the two Bragg reflector layer series (2, 4) is partially permeable for laser irradiation which is produced in the active series of layers (3). At least one light absorbing layer (9) with a defined light absorption is arranged between the partially permeable Bragg reflector layer series (4) and the first electrical contact layer (7) or on the light emitting side of the first electrical contact layer (7).</p>		
<p>(57) Zusammenfassung</p>		
<p>Die Erfindung beschreibt eine Vertikalresonator-Laserdiode (10, 20), bei der zwischen einer ersten Bragg-Reflektor-Schichtenfolge (2) und einer zweiten Bragg-Reflektor-Schichtenfolge (4), von denen jede eine Mehrzahl von Spiegelpaaren (22, 44) aufweist, eine aktive Schichtenfolge (3) zur Erzeugung von Laserstrahlung angeordnet ist, die beiden Bragg-Reflektor-Schichtenfolgen (2, 4) einen Laser-Resonator bilden, die beiden Bragg-Reflektor-Schichtenfolgen (2, 4) und die aktive Schichtenfolge (3) zwischen einer ersten (7) und einer zweiten elektrischen Kontaktschicht (8) angeordnet sind, eine (4) der beiden Bragg-Reflektor-Schichtenfolgen (2, 4) für die in der aktiven Schichtenfolge (3) erzeugte Laserstrahlung teildurchlässig ist, wobei mindestens eine lichtabsorbierende Schicht (9) mit einer definierten Lichtabsorption zwischen der teildurchlässigen Bragg-Reflektor-Schichtenfolge (4) und der ersten elektrischen Kontaktschicht (7) oder auf der Lichtaustrittsseite der ersten elektrischen Kontaktschicht (7) angeordnet ist.</p>		

LEDIGLICH ZUR INFORMATION

Codes zur Identifizierung von PCT-Vertragsstaaten auf den Kopfbögen der Schriften, die internationale Anmeldungen gemäss dem PCT veröffentlichen.

AL	Albanien	ES	Spanien	LS	Lesotho	SI	Slowenien
AM	Armenien	FI	Finnland	LT	Litauen	SK	Slowakei
AT	Österreich	FR	Frankreich	LU	Luxemburg	SN	Senegal
AU	Australien	GA	Gabun	LV	Lettland	SZ	Swasiland
AZ	Aserbaidschan	GB	Vereinigtes Königreich	MC	Monaco	TD	Tschad
BA	Bosnien-Herzegowina	GE	Georgien	MD	Republik Moldau	TG	Togo
BB	Barbados	GH	Ghana	MG	Madagaskar	TJ	Tadschikistan
BE	Belgien	GN	Guinea	MK	Die ehemalige jugoslawische Republik Mazedonien	TM	Turkmenistan
BF	Burkina Faso	GR	Griechenland	ML	Mali	TR	Türkei
BG	Bulgarien	HU	Ungarn	MN	Mongolei	TT	Trinidad und Tobago
BJ	Benin	IE	Irland	MR	Mauretanien	UA	Ukraine
BR	Brasilien	IL	Israel	MW	Malawi	UG	Uganda
BY	Belarus	IS	Island	MX	Mexiko	US	Vereinigte Staaten von Amerika
CA	Kanada	IT	Italien	NE	Niger	UZ	Usbekistan
CF	Zentralafrikanische Republik	JP	Japan	NL	Niederlande	VN	Vietnam
CG	Kongo	KE	Kenia	NO	Norwegen	YU	Jugoslawien
CH	Schweiz	KG	Kirgisistan	NZ	Neuseeland	ZW	Zimbabwe
CI	Côte d'Ivoire	KP	Demokratische Volksrepublik Korea	PL	Polen		
CM	Kamerun	KR	Republik Korea	PT	Portugal		
CN	China	KZ	Kasachstan	RO	Rumänien		
CU	Kuba	LC	St. Lucia	RU	Russische Föderation		
CZ	Tschechische Republik	LI	Liechtenstein	SD	Sudan		
DE	Deutschland	LK	Sri Lanka	SE	Schweden		
DK	Dänemark	LR	Liberia	SG	Singapur		
EE	Estland						

Beschreibung

Vertikalresonator-Laserdiode mit einer lichtabsorbierenden Schicht

5

Die Erfindung betrifft eine Vertikalresonator-Laserdiode nach dem Oberbegriff des Patentanspruchs 1.

10 Eine derartige Vertikalresonator-Laserdiode ist grundsätzlich aus der US-A-5,637,511 bekannt, die eine Struktur mit Bereichen hohen Widerstands zur Ladungsträgereinschnürung beschreibt, bei der die Lichtauskopplung durch das Substrat erfolgt.

15 Die Verwendung von Vertikalresonator-Laserdioden (VCSELs) in optischen Sendemodulen, wie z.B. PAROLI, erfordert oftmals einen relativ geringen differentiellen Quantenwirkungsgrad (DQE) des Bauelementes innerhalb enger Spezifikationsgrenzen. Dabei werden an die Reproduzierbarkeit der Fertigungsprozesse
20 hohe Anforderungen gestellt. Zur Steigerung der Ausbeute wäre daher eine Einstellung des DQE nach dem epitaktischen Wachstum während der Bauelemente-Prozessierung wünschenswert.

25 Ein weiteres Problem von VCSELs besteht darin, daß Reflexionen der VCSEL-Ausgangsstrahlung an nahen Oberflächen, wie z.B. der Glasfaser-Stirnfläche, zu einem großen Rauschen des Bauelementes führen können, was die Leistungsfähigkeit optischer Datenübertragungssysteme limitiert.

30 Der DQE von VCSELs wird bislang durch die Eigenschaften der Halbleiterschichten bestimmt, die während des epitaktischen Wachstums auf dem Wafer abgeschieden werden. Um einen relativ niedrigen DQE zu erreichen, werden beispielsweise eine große Zahl von Schichtpaaren im Auskoppelspiegel des VCSELs verwendet.
35 Dadurch steigt jedoch die interne optische Intensität im Vergleich zu der externen Strahlungsstärke an, was sich nachteilig auf die Lebensdauer der Bauelemente auswirken kann.

Die Rückwirkungsempfindlichkeit von VCSELS wurde bislang allenfalls durch externe optische Elemente, wie teilverspiegelte Linsen, verringert. Optische Isolatoren, wie sie in der optischen Nachrichtentechnik Verwendung finden, scheiden für
5 Datenverbindungen über kurze Entfernungen aus Kostengründen aus.

Demgemäß liegt der vorliegenden Erfindung die Aufgabe zugrunde, eine Vertikalresonator-Laserdiode zu schaffen, bei
10 welcher der differentielle Quantenwirkungsgrad gezielt eingestellt werden kann und gleichzeitig die Rückwirkungsempfindlichkeit verringert werden kann.

Diese Aufgabe wird durch die Merkmale des Patentanspruchs 1
15 gelöst.

In der hier zu beschreibenden Erfindung wird der nach außen sichtbare, externe DQE durch mindestens eine absorbierende Schicht verringert, die in der Umgebung der Oberfläche der
20 Vertikalresonator-Laserdiode (VCSEL) angeordnet ist. Die absorbierende Schicht reduziert die Zahl der nach außen gelangenden Photonen durch Fundamentalabsorption.

Die Erzeugung der lichtabsorbierenden Schicht kann grundsätzlich auf zwei unterschiedliche Arten in den Herstellungspro-
25 zess des VCSEL eingebunden werden.

In der ersten Ausführungsart wird die lichtabsorbierende Schicht gewissermaßen in den VCSEL monolithisch integriert,
30 d.h. sie wird direkt im Anschluß an die Aufbringung der lichtaustrittsseitigen Bragg-Reflektor-Schichtenfolge vorzugsweise mit ein- und demselben Wachstumsverfahren mit einer bestimmten Dicke auf diese aufgewachsen. Daran anschließend wird eine lichtaustrittsseitige elektrische Kontaktschicht
35 auf die lichtabsorbierende Schicht aufgebracht und mit einer Lichtaustrittsöffnung versehen. Dann wird die Lichtleistung des VCSEL gemessen und der differentielle Quantenwirkungsgrad bestimmt. Abwechselnd wird dann die lichtabsorbierende Schicht im Bereich der Lichtaustrittsöffnung abgeätzt und die

Lichtleistung gemessen und dieser Verfahrensschritt wird so lange fortgesetzt, bis der gewünschte differentielle Quantenwirkungsgrad erreicht ist.

- 5 In der zweiten Ausführungsart wird der VCSEL fertigprozes-
siert und die lichtabsorbierende Schicht wird nachträglich
auf die lichtaustrittsseitige elektrische Kontaktschicht auf-
gebracht. Die Einstellung der geeigneten Dicke kann wiederum
auf zwei unterschiedliche Arten erfolgen. Die lichtabsorbie-
10 rende Schicht kann zum einen wie in der ersten Ausführungsart
mit einer bestimmten ausreichenden Dicke aufgebracht und al-
ternierend mit Lichtleistungsmessungen abgeätzt werden. Die
lichtabsorbierende Schicht kann zum anderen schrittweise mit
geringen Schichtdickeninkrementen und alternierend mit Licht-
15 leistungsmessungen aufgebracht werden.

- Für die in der heutigen optischen Datenübertragung wichtige
Wellenlänge von 850nm kann in der ersten Ausführungsart als
absorbierende Schicht z.B. eine bis zu mehrere μm dicke GaAs-
20 Schicht verwendet werden. In der zweiten Ausführungsart kann
beispielsweise amorphes Silizium durch ein geeignetes Ab-
scheideverfahren aufgebracht werden.

- Die absorbierende Schicht verringert neben dem differentiellen
25 Quantenwirkungsgrad auch gleichzeitig die externe Steilheit
des Bauelementes, ohne die interne Photonendichte nen-
nenswert zu erhöhen. Außerdem werden externe Reflexionen, die
in den optischen Resonator des VCSELS zurückfallen, von die-
ser absorbierenden Schicht gedämpft, so daß eine verbesserte
30 Stabilität des Bauelementes gegenüber externen Rückwirkungen
gegeben ist.

- Im folgenden werden die zwei Ausführungsarten der vorliegen-
den Erfindung anhand der in den Figuren dargestellten fertig-
35 prozessierten VCSELS näher erläutert. Es zeigen:

Fig.1 den epitaktischen Schichtaufbau einer erfindungsgemäßen
Vertikalresonator-Laserdiode, die nach der ersten Ausfüh-
rungsart hergestellt wurde;

Fig.2 den epitaktischen Schichtaufbau einer erfindungsgemäßen Vertikalresonator-Laserdiode, die nach der zweiten Ausführungsart hergestellt wurde;

5

Die erste Ausführungsart gemäß Fig.1 zeigt den epitaktischen Schichtaufbau einer erfindungsgemäßen Vertikalresonator-Laserdiode 10, bei der eine lichtabsorbierende Schicht 9 in die Laserdiode monolithisch integriert ist.

10

Auf einem GaAs-Substrat 6 befindet sich eine erste, untere Bragg-Reflektor-Schichtenfolge 2, die aus einzelnen identischen Spiegelpaaren 22 aufgebaut ist. Die Spiegelpaare bestehen jeweils aus zwei AlGaAs-Schichten unterschiedlicher Bandlücke. In gleicher Weise ist eine zweite, obere Bragg-Reflektor-Schichtenfolge 4 aus entsprechenden Spiegelpaaren 44 aufgebaut. Zwischen der unteren und der oberen Bragg-Reflektor-Schichtenfolge ist eine aktive Schichtenfolge 3 eingebettet, die eine aktive Zone 3a aufweist. In dem dargestellten Ausführungsbeispiel beträgt die Emissionswellenlänge der Laserdiode 850 nm. Auf der oberen Oberfläche der Laserdiode 10 befindet sich eine erste Metallisierungsschicht 7, die für den elektrischen Anschluß der p-dotierten Seite der Laserdiode 10 verwendet wird. Die erste Metallisierungsschicht 7 weist eine zentrale Öffnung für den Durchtritt der Laserstrahlung auf. Die n-dotierte Seite der Diode wird üblicherweise über eine am Substrat 6 kontaktierte zweite Metallisierungsschicht 8 elektrisch angeschlossen.

30 Die obere Bragg-Reflektor-Schichtenfolge 4 enthält in dem Ausführungsbeispiel ein Spiegelpaar 44, welches eine sogenannte Stromapertur 41 enthält. Die Stromapertur 41 sorgt für eine laterale Strombegrenzung und definiert damit die eigentliche aktive lichtemittierende Fläche in der aktiven Zone 3a.
35 Der Stromfluß wird auf den Öffnungsbereich der Stromapertur 41 beschränkt. Somit liegt die lichtemittierende Fläche direkt unterhalb dieses Öffnungsbereichs in der aktiven Zone

3a. Die Stromapertur 41 kann in bekannter Weise durch partielle Oxidation der AlGaAs-Schichten des betreffenden Spiegel-paares oder durch Ionen- oder Protonenimplantation hergestellt werden.

5

Die obere Bragg-Reflektor-Schichtenfolge 4 der Laserdiode 10 ist in Form einer Mesa-Struktur oberhalb der aktiven Schicht 3 strukturiert. Die mesaförmige obere Bragg-Reflektor-Schichtenfolge 4 wird seitlich durch eine geeignete Passivierungsschicht 11 umschlossen.

Oberhalb der oberen Bragg-Reflektor-Schichtenfolge 4 ist eine lichtabsorbierende Schicht 9 aufgebracht, durch die eine gezielte Abschwächung der emittierten Lichtstrahlung durch
15 Lichtabsorption eingestellt werden kann. Mit dieser Schicht 9 kann somit der differentielle Quantenwirkungsgrad (DQE) der Laserdiode gezielt eingestellt werden. Bei einer Emissionswellenlänge von 850 nm - wie im vorliegenden Ausführungsbeispiel - bietet sich als Material für die lichtabsorbierende
20 Schicht 9 GaAs mit einer Schichtdicke in der Größenordnung von einigen μm an. Die GaAs-Schicht wird vorzugsweise mit den anderen Halbleiterschichten der Laserdiode zusammen aufgewachsen. Als Wachstumsverfahren dient MBE (Molekularstrahlepitaxie) oder MOCVD (metallorganische Gasphasenepitaxie). Obwohl die gewünschte Schichtdicke durch Einstellung der Wachstumsparameter relativ genau eingestellt werden kann, ist der
25 differentielle Quantenwirkungsgrad das Produkt mehrerer Faktoren wie z.B. der Materialabsorption, die wiederum von der Dotierung abhängig ist. Daher erfolgt die Einstellung der DQE dadurch, daß die lichtabsorbierende Schicht 9 zunächst mit
30 einer hinreichenden Schichtdicke aufgewachsen und anschließend teilweise wieder abgeätzt wird.

Das Bauelement wird also zunächst fertiggestellt und die
35 emittierte Lichtleistung wird gemessen und daraus wird der DQE ermittelt. Dann wird die lichtabsorbierende Schicht im Bereich der Lichtaustrittsöffnung der ersten elektrischen

Kontaktschicht teilweise abgeätzt, wobei die aufgebraachte Metallisierungsschicht 7 als Ätzmaske wirken kann. Bei dem in Fig.1 dargestellten Bauelement ist die in die GaAs-Schicht 9 geätzte Vertiefung und die geringfügigen Unterätzungen im Randbereich der Lichtaustrittsöffnung zu erkennen.

Die Herstellung der Mesa-Struktur der Laserdiode und die Erzeugung der Oxidapertur 41 erfolgt nach dem Aufwachsen der lichtabsorbierenden Schicht 9. Dann wird die Struktur mit der Passivierungsschicht 11 planarisiert und die erste Kontaktschicht 7 aufgebracht, worauf - wie bereits beschrieben - die Einstellung der Schichtdicke der lichtabsorbierenden Schicht durchgeführt wird.

In Fig.2 ist eine erfindungsgemäße Vertikalresonator-Laserdiode 20 dargestellt, die nach der zweiten Ausführungsart hergestellt wurde. Der Einfachheit halber sind für funktions- oder bedeutungsgleiche Elemente wie in Fig.1 die gleichen Bezugsziffern gewählt worden und deren Erläuterung wird hier weggelassen.

Bei dieser Ausführungsart wird der VCSEL fertigprozessiert und auf die lichtaustrittsseitige Bragg-Reflektorschichtenfolge 4 wird die erste elektrische Kontaktschicht 7 mit der Lichtaustrittsöffnung aufgebracht. Gewünschtenfalls kann zunächst die Lichtleistung gemessen und der DQE des VCSEL bestimmt. Danach erfolgt die Aufbringung der lichtabsorbierenden Schicht 9, die in dieser Ausführungsart beispielsweise aus amorphem Silizium bestehen kann. Diese wird zunächst mit einem geeigneten Abscheideverfahren wie z.B. Aufdampfen auf die Lichtaustrittsöffnung aufgebracht. Vorzugsweise wird die Schicht 9 durch eine geeignete Maskierung oder durch Lift-Off-Technik derart aufgebracht, daß sie die Lichtaustrittsöffnung bedeckt und die erste Kontaktierungsschicht 7 im Randbereich geringfügig überlappt.

- Die geeignete Schichtdicke der lichtabsorbierenden Schicht 9 kann durch wechselweises Aufbringen der Schicht und Messen der Lichtleistung eingestellt werden, wobei der Verfahrensschritt beendet wird, wenn der gewünschte DQE erreicht ist.
- 5 Es kann aber auch wie bei der ersten Ausführungsart zuerst eine ausreichende Schichtdicke aufgebracht werden und anschließend durch wechselweises Abätzen und Messen der Lichtleistung die geeignete Schichtdicke eingestellt werden.

Patentansprüche

1. Vertikalresonator-Laserdiode (10, 20), bei der
- zwischen einer ersten Bragg-Reflektor-Schichtenfolge (2) und einer zweiten Bragg-Reflektor-Schichtenfolge (4), von denen jede eine Mehrzahl von Spiegelpaaren (22, 44) aufweist, eine aktive Schichtenfolge (3) zur Erzeugung von Laserstrahlung angeordnet ist,
 - die beiden Bragg-Reflektor-Schichtenfolgen (2, 4) einen Laser-Resonator bilden,
 - die beiden Bragg-Reflektor-Schichtenfolgen (2, 4) und die aktive Schichtenfolge (3) zwischen einer ersten (7) und einer zweiten elektrischen Kontaktschicht (8) angeordnet sind,
 - eine (4) der beiden Bragg-Reflektor-Schichtenfolgen (2, 4) für die in der aktiven Schichtenfolge (3) erzeugte Laserstrahlung teildurchlässig ist,
- d a d u r c h g e k e n n z e i c h n e t, daß
- mindestens eine lichtabsorbierende Schicht (9) mit einer definierten Lichtabsorption auf der Lichtaustrittsseite der teildurchlässigen Bragg-Reflektor-Schichtenfolge (4) angeordnet ist.
2. Vertikalresonator-Laserdiode (10) nach Anspruch 1,
- d a d u r c h g e k e n n z e i c h n e t, daß
- die lichtabsorbierende Schicht (9) zwischen der teildurchlässigen Bragg-Reflektor-Schichtenfolge (4) und der ersten elektrischen Kontaktschicht (7) angeordnet ist.
3. Vertikalresonator-Laserdiode (20) nach Anspruch 1,
- d a d u r c h g e k e n n z e i c h n e t, daß
- die lichtabsorbierende Schicht (9) auf der Lichtaustrittsseite der ersten elektrischen Kontaktschicht (7) aufgebracht ist.
4. Vertikalresonator-Laserdiode (10, 20) nach Anspruch 2 oder 3,

d a d u r c h g e k e n n z e i c h n e t, daß

- die lichtabsorbierende Schicht (9) im Bereich der Lichtaustrittsöffnung zur Einstellung der definierten Lichtabsorption gezielt abgeätzt ist.

5

5. Verfahren zur Herstellung einer Vertikalresonator-Laserdiode nach Anspruch 1 oder 2, bei welchem

- auf ein Halbleitersubstrat nacheinander die erste Bragg-Reflektor-Schichtenfolge, die aktive Schichtenfolge, die
10 zweite Bragg-Reflektor-Schichtenfolge und die lichtabsorbierende Schicht mit einer bestimmten Dicke aufgebracht wird,
- auf die lichtabsorbierende Schicht die erste elektrische Kontaktschicht mit einer Lichtaustrittsöffnung aufgebracht
15 wird und auf die Substratrückseite die zweite elektrische Kontaktschicht aufgebracht wird,
- die Lichtleistung gemessen und der differentielle Quantenwirkungsgrad bestimmt wird und die lichtabsorbierende
20 Schicht im Bereich der Lichtaustrittsöffnung so lange abgeätzt wird, bis ein gewünschter differentieller Quantenwirkungsgrad erreicht ist.

6. Verfahren zur Herstellung einer Vertikalresonator-Laserdiode nach Anspruch 1 oder 3, bei welchem

- 25 - auf ein Halbleitersubstrat nacheinander die erste Bragg-Reflektor-Schichtenfolge, die aktive Schichtenfolge und die zweite Bragg-Reflektor-Schichtenfolge aufgebracht wird,
- auf die zweite Bragg-Reflektor-Schichtenfolge die erste
30 elektrische Kontaktschicht mit einer Lichtaustrittsöffnung aufgebracht wird, und auf die Substratrückseite die zweite elektrische Kontaktschicht aufgebracht wird,
- im Bereich der Lichtaustrittsöffnung die lichtabsorbierende Schicht aufgebracht wird, wobei
35 - entweder die lichtabsorbierende Schicht mit einer bestimmten Dicke aufgebracht, die Lichtleistung gemessen und der differentielle Quantenwirkungsgrad bestimmt

wird und die lichtabsorbierende Schicht im Bereich der Lichtaustrittsöffnung so lange abgeätzt wird, bis ein gewünschter differentieller Quantenwirkungsgrad erreicht ist,

- 5 - oder die lichtabsorbierende Schicht schrittweise aufgebracht wird, wobei zwischendurch die Lichtleistung gemessen und der differentielle Quantenwirkungsgrad bestimmt wird, und der Verfahrensschritt beendet wird, sobald ein gewünschter differentieller Quantenwirkungs-
- 10 grad erreicht ist.

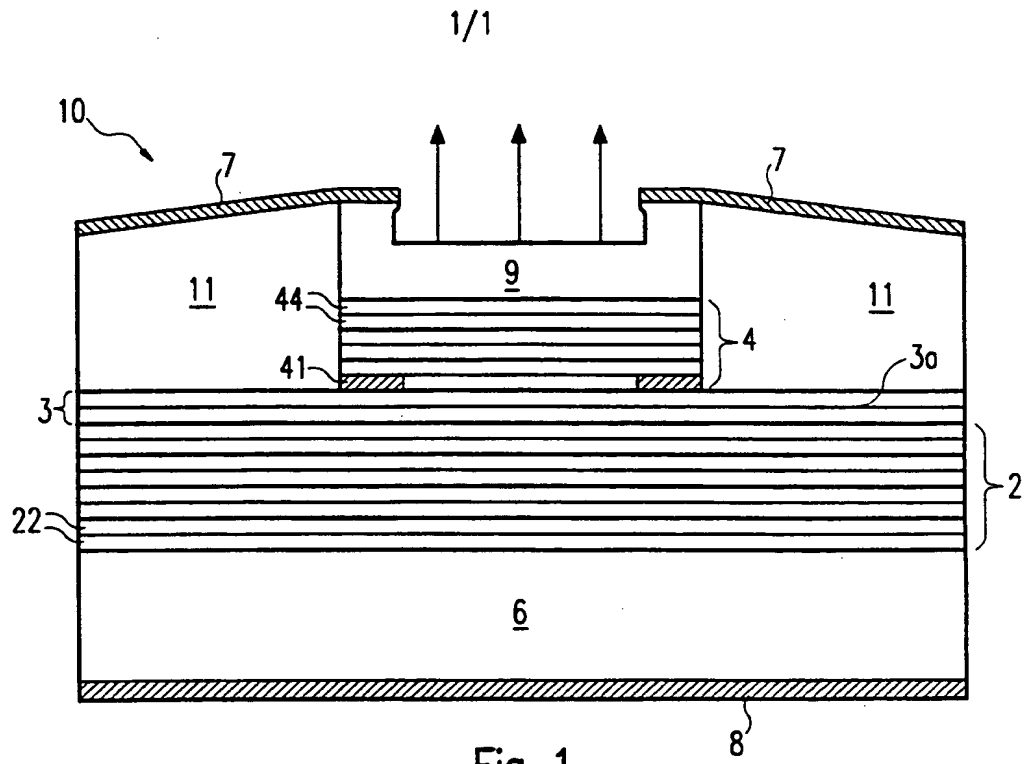


Fig. 1

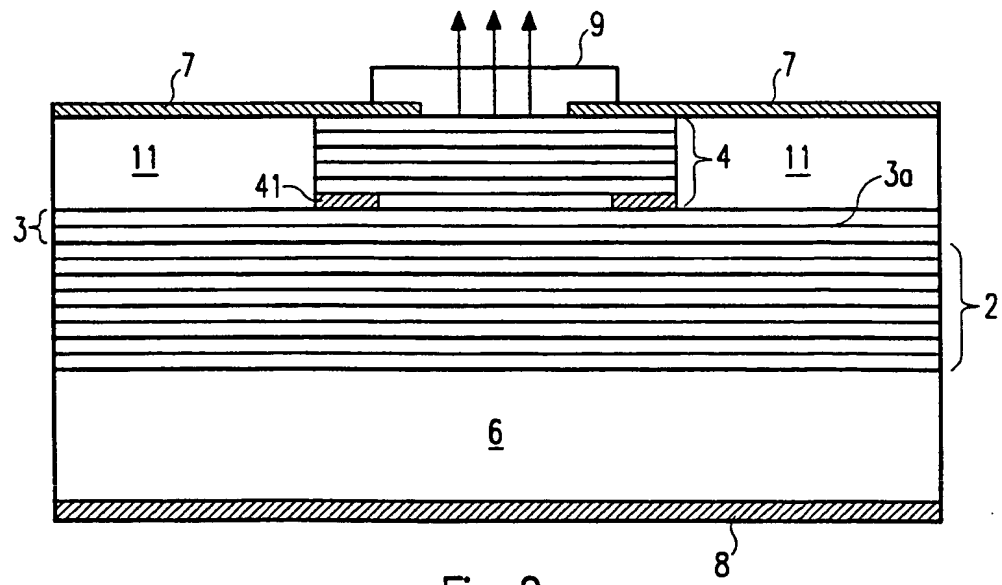


Fig. 2

INTERNATIONAL SEARCH REPORT

In ternational Application No

PCT/DE 00/00543

A. CLASSIFICATION OF SUBJECT MATTER
IPC 7 H01S5/18

According to International Patent Classification (IPC) or to both national classification and IPC

B. FIELDS SEARCHED

Minimum documentation searched (classification system followed by classification symbols)
IPC 7 H01S

Documentation searched other than minimum documentation to the extent that such documents are included in the fields searched

Electronic data base consulted during the international search (name of data base and, where practical, search terms used)

EPO-Internal, PAJ, INSPEC

C. DOCUMENTS CONSIDERED TO BE RELEVANT

Category *	Citation of document, with indication, where appropriate, of the relevant passages	Relevant to claim No.
A	EP 0 892 473 A (MITEL SEMICONDUCTOR AB) 20 January 1999 (1999-01-20) the whole document	1,5,6
A	US 5 838 715 A (TAN MICHAEL R ET AL) 17 November 1998 (1998-11-17) abstract; figure 1	1,5,6
A	US 5 745 515 A (MARTA TERESA M ET AL) 28 April 1998 (1998-04-28) column 6, line 18 -column 7, line 8; figure 1	1,5,6
	--- -/--	

Further documents are listed in the continuation of box C.

Patent family members are listed in annex.

* Special categories of cited documents :

- "A" document defining the general state of the art which is not considered to be of particular relevance
- "E" earlier document but published on or after the international filing date
- "L" document which may throw doubts on priority claim(s) or which is cited to establish the publication date of another citation or other special reason (as specified)
- "O" document referring to an oral disclosure, use, exhibition or other means
- "P" document published prior to the international filing date but later than the priority date claimed

- "T" later document published after the international filing date or priority date and not in conflict with the application but cited to understand the principle or theory underlying the invention
- "X" document of particular relevance; the claimed invention cannot be considered novel or cannot be considered to involve an inventive step when the document is taken alone
- "Y" document of particular relevance; the claimed invention cannot be considered to involve an inventive step when the document is combined with one or more other such documents, such combination being obvious to a person skilled in the art.
- "&" document member of the same patent family

Date of the actual completion of the international search

17 July 2000

Date of mailing of the international search report

25/07/2000

Name and mailing address of the ISA

European Patent Office, P.B. 5818 Patentlaan 2
NL - 2280 HV Rijswijk
Tel. (+31-70) 340-2040, Tx. 31 651 epo nl,
Fax: (+31-70) 340-3016

Authorized officer

Claessen, L

INTERNATIONAL SEARCH REPORT

Int. National Application No

PCT/DE 00/00543

C.(Continuation) DOCUMENTS CONSIDERED TO BE RELEVANT		
Category *	Citation of document, with indication, where appropriate, of the relevant passages	Relevant to claim No.
A	<p>PATENT ABSTRACTS OF JAPAN vol. 014, no. 112 (E-0897), 28 February 1990 (1990-02-28) & JP 01 310585 A (MITSUBISHI ELECTRIC CORP), 14 December 1989 (1989-12-14) abstract</p> <p align="center">---</p>	1
A	<p>BRIVIO F ET AL: "FEEDBACK EFFECTS IN OPTICAL COMMUNICATION SYSTEMS: CHARACTERISTIC CURVE FOR SINGLE-MODE INGAASP LASERS" APPLIED OPTICS, US, OPTICAL SOCIETY OF AMERICA, WASHINGTON, vol. 31, no. 24, 20 August 1992 (1992-08-20), pages 5044-5050, XP000294668 ISSN: 0003-6935 page 5049</p> <p align="center">-----</p>	1,5,6

INTERNATIONAL SEARCH REPORT

Information on patent family members

International Application No

PCT/DE 00/00543

Patent document cited in search report	Publication date	Patent family member(s)	Publication date
EP 0892473 A	20-01-1999	GB 2327297 A CA 2242853 A JP 11087846 A	20-01-1999 14-01-1999 30-03-1999
US 5838715 A	17-11-1998	JP 10056233 A	24-02-1998
US 5745515 A	28-04-1998	NONE	
JP 01310585 A	14-12-1989	NONE	

A. KLASSIFIZIERUNG DES ANMELDUNGSGEGENSTANDES IPK 7 H01S5/18		
Nach der Internationalen Patentklassifikation (IPK) oder nach der nationalen Klassifikation und der IPK		
B. RECHERCHIERTE GEBIETE Recherchiertes Mindestprüfstoff (Klassifikationssystem und Klassifikationssymbole) IPK 7 H01S		
Recherchierte aber nicht zum Mindestprüfstoff gehörende Veröffentlichungen, soweit diese unter die recherchierten Gebiete fallen		
Während der internationalen Recherche konsultierte elektronische Datenbank (Name der Datenbank und evtl. verwendete Suchbegriffe) EPO-Internal, PAJ, INSPEC		
C. ALS WESENTLICH ANGESEHENE UNTERLAGEN		
Kategorie*	Bezeichnung der Veröffentlichung, soweit erforderlich unter Angabe der in Betracht kommenden Teile	Betr. Anspruch Nr.
A	EP 0 892 473 A (MITEL SEMICONDUCTOR AB) 20. Januar 1999 (1999-01-20) das ganze Dokument	1,5,6
A	---	
A	US 5 838 715 A (TAN MICHAEL R ET AL) 17. November 1998 (1998-11-17) Zusammenfassung; Abbildung 1	1,5,6
A	US 5 745 515 A (MARTA TERESA M ET AL) 28. April 1998 (1998-04-28) Spalte 6, Zeile 18 -Spalte 7, Zeile 8; Abbildung 1	1,5,6
	-/--	
<input checked="" type="checkbox"/> Weitere Veröffentlichungen sind der Fortsetzung von Feld C zu entnehmen <input checked="" type="checkbox"/> Siehe Anhang Patentfamilie		
* Besondere Kategorien von angegebenen Veröffentlichungen : "A" Veröffentlichung, die den allgemeinen Stand der Technik definiert, aber nicht als besonders bedeutsam anzusehen ist "E" älteres Dokument, das jedoch erst am oder nach dem internationalen Anmeldedatum veröffentlicht worden ist "L" Veröffentlichung, die geeignet ist, einen Prioritätsanspruch zweifelhaft erscheinen zu lassen, oder durch die das Veröffentlichungsdatum einer anderen im Recherchenbericht genannten Veröffentlichung belegt werden soll oder die aus einem anderen besonderen Grund angegeben ist (wie ausgeführt) "O" Veröffentlichung, die sich auf eine mündliche Offenbarung, eine Benutzung, eine Ausstellung oder andere Maßnahmen bezieht "P" Veröffentlichung, die vor dem internationalen Anmeldedatum, aber nach dem beanspruchten Prioritätsdatum veröffentlicht worden ist "T" Spätere Veröffentlichung, die nach dem internationalen Anmeldedatum oder dem Prioritätsdatum veröffentlicht worden ist und mit der Anmeldung nicht kollidiert, sondern nur zum Verständnis des der Erfindung zugrundeliegenden Prinzips oder der ihr zugrundeliegenden Theorie angegeben ist "X" Veröffentlichung von besonderer Bedeutung; die beanspruchte Erfindung kann allein aufgrund dieser Veröffentlichung nicht als neu oder auf erfinderischer Tätigkeit beruhend betrachtet werden "Y" Veröffentlichung von besonderer Bedeutung; die beanspruchte Erfindung kann nicht als auf erfinderischer Tätigkeit beruhend betrachtet werden, wenn die Veröffentlichung mit einer oder mehreren anderen Veröffentlichungen dieser Kategorie in Verbindung gebracht wird und diese Verbindung für einen Fachmann naheliegend ist "&" Veröffentlichung, die Mitglied derselben Patentfamilie ist		
Datum des Abschlusses der internationalen Recherche 17. Juli 2000		Absenddatum des internationalen Recherchenberichts 25/07/2000
Name und Postanschrift der Internationalen Recherchenbehörde Europäisches Patentamt, P.B. 5818 Patentlaan 2 NL - 2280 HV Rijswijk Tel. (+31-70) 340-2040, Tx. 31 651 epo nl, Fax: (+31-70) 340-3016		Bevollmächtigter Bediensteter Claessen, L

C.(Fortsetzung) ALS WESENTLICH ANGESEHENE UNTERLAGEN		
Kategorie*	Bezeichnung der Veröffentlichung, soweit erforderlich unter Angabe der in Betracht kommenden Teile	Betr. Anspruch Nr.
A	PATENT ABSTRACTS OF JAPAN vol. 014, no. 112 (E-0897), 28. Februar 1990 (1990-02-28) & JP 01 310585 A (MITSUBISHI ELECTRIC CORP), 14. Dezember 1989 (1989-12-14) Zusammenfassung -----	1
A	BRIVIO F ET AL: "FEEDBACK EFFECTS IN OPTICAL COMMUNICATION SYSTEMS: CHARACTERISTIC CURVE FOR SINGLE-MODE INGAASP LASERS" APPLIED OPTICS,US,OPTICAL SOCIETY OF AMERICA,WASHINGTON, Bd. 31, Nr. 24, 20. August 1992 (1992-08-20), Seiten 5044-5050, XP000294668 ISSN: 0003-6935 Seite 5049 -----	1,5,6

INTERNATIONAL RECHERCHENBERICHT

Angaben zu Veröffentlichungen, die zur selben Patentfamilie gehören

Internationales Aktenzeichen

PCT/DE 00/00543

Im Recherchenbericht angeführtes Patentdokument	Datum der Veröffentlichung	Mitglied(er) der Patentfamilie	Datum der Veröffentlichung
EP 0892473 A	20-01-1999	GB 2327297 A CA 2242853 A JP 11087846 A	20-01-1999 14-01-1999 30-03-1999
US 5838715 A	17-11-1998	JP 10056233 A	24-02-1998
US 5745515 A	28-04-1998	KEINE	
JP 01310585 A	14-12-1989	KEINE	

Chemical Abstracts, vol. 102, no. 15, 15th April 1985, page 283, abstract no. 128005x, Columbus, Ohio, US; Ch. K. Wat et al.: "Photosensitizerprotein conjugates: potential us as photoimmunoth rapeutic agents", & Prog.Clin.Biol.Res. 1984, 170 (Porphyrin localization treat tumors), 351-9

Chemical Abstracts, vol. 103, no. 15, 14th October 1985, page 558, abstract 121395m, Columbus, Ohio, US; D. Mew et al.: "Ability of specific monoclonal antibodies and conventional antisera conjugated to hematoporphyrin to label and kill selected cell lines subsequent to light activation", & Cancer Res. 1985, 45 (9), 4380-6

The Journal of Immunology, vol. 125, no. 3, September 1980, page 1201, Williams & Wilkins Co. US; G.W. Philpott et al.: "Selective binding and cytotoxicity of rat basophilic leukemia cells (RBL-1) with immunoglobulin E-biotin and avidin-glucose oxidase conjugates"

Chemical Abstracts, vol. 89, no. 13, 25th September 1978, page 29, abstract no. 110773z Columbus, Ohio, US; & JP-A-77141 882

Chemical Abstracts, vol. 97, no. 7, 16th August 1982, page 224, abstract nr. 51193a, Columbus, Ohio, US; H. Sakurai et al.: "Growth inhibition and photooxidative toxicity in the housefly, *Musca domestica* L. caused by xanthene dye in larval growth medium and after injection" & Environ,Entomol. 1982, 11(2), 467-70

Cancer Research, vol. 45, September 1985, pages 4380-4386 D. Mew et al.: "Ability of specific monoclonal antibodies and conventional antisera conjugated to hematoporphyrin to label and kill selected cell lines subsequent to light activation"

Chemical Abstracts, vol. 103, no. 5, 5th August 1985, page 491, abstract no. 37259n Columbus, Ohio, US; R. Ocampo et al.: "Identification of polar porphyrins in oil shale" & J.Chem.Soc.Chem.Commun.1985, (4), 198-200

Inventor: Alvar z, Vernon Leon
187 Rice Drive
Morrisville Pennsylvania(US)

Ⓣ Representative: Warcoln, Jacques et al
Cabinet Régimbeau 26, avenue Kléber
F-75116 Paris(FR)

TABLE OF CONTENTS

	<u>Page</u>
1. FIELD OF THE INVENTION	6
2. BACKGROUND OF THE INVENTION	7
2.1. CARRIER SYSTEMS	7
2.2. COVALENT ATTACHMENT TO ANTIBODIES	8
2.3. CARRIER SYSTEMS USING MONOCLONAL ANTIBODIES	10
2.4. PHOTORADIATION THERAPY	11
3. SUMMARY OF THE INVENTION	12
4. BRIEF DESCRIPTION OF THE FIGURES	28
5. DETAILED DESCRIPTION OF THE INVENTION.	30
5.1. ANTIBODIES	30
5.2. METHODS FOR ATTACHING THERAPEUTIC AGENTS TO ANTIBODIES AND ANTIBODY FRAGMENTS	32
5.2.1. ATTACHMENT TO OXIDIZED CARBOHYDRATE MOIETIES	32
5.2.1.1. CHEMICAL METHODS OF OXIDATION . . .	33
5.2.1.2. ENZYMIC METHODS OF OXIDATION . . .	34
5.2.1.3. PREPARATION OF ANTIBODY- THERAPEUTIC AGENT CONJUGATES. . .	34
5.2.1.4. STABILIZATION OF THE ANTIBODY CONJUGATES.	35

5.2.2.	ATTACHMENT TO SULFHYDRYL GROUPS . . .	36
5.3.	THERAPEUTIC AGENTS	39
5.4.	LINKERS.	43
5.4.1.	BRANCHED LINKERS	45
5.4.2.	CLEAVABLE LINKERS.	45
5.4.3.	SPACERS AND CLEAVABLE ELEMENTS	46
5.4.4.	SERUM COMPLEMENT AND SELECTION OF LINKERS	47
5.4.5.	LINKERS FOR RELEASE WITHOUT COMPLEMENT ACTIVATION	55
5.4.6.	NON-CLEAVABLE LINKERS OR DIRECT ATTACHMENT	56
5.4.6.1.	NON-CLEAVABLE LINKERS	57
5.4.6.2.	NON-CLEAVABLE CONJUGATES	57
5.5.	USES OF ANTIBODY-THERAPEUTIC AGENT CONJUGATES	57
5.5.1.	PHOTORADIATION THERAPY	59
5.5.2.	SUBSTRATE MODIFICATION	60
5.6.	ADVANTAGES OF ANTIBODY-THERAPEUTIC AGENT CONJUGATES	61
6.	EXAMPLES: SERIES I	62
6.1.	OXIDATION OF MOUSE MONOCLONAL IgM	63
6.2.	ATTACHMENT OF LINKER TO EDDHA	63
6.3.	PREPARATION OF IgM-LINKER-EDDHA CONJUGATES	64
6.4.	CARBODIIMIDE ATTACHMENT OF LINKER-EDDHA TO IgM	64
6.5.	CARBODIIMIDE ATTACHMENT OF EDDHA TO IgM	65

6.6.	EFFECTS OF CARBOHYDRATE-MEDIATED ATTACHMENT TO ANTIBODIES	65
7.	EXAMPLES: SERIES II	67
7.1.	OXIDATION OF THE CARBOHYDRATE MOIETY OF THE ANTIBODY MOLECULE	67
7.2.	PREPARATION OF THE TRIPEPTIDE-AMC FOR ATTACHMENT TO THE ANTIBODY MOLECULE	68
7.3.	ATTACHMENT OF PHENYLHYDRAZINE-TRYPEPTIDE- AMC TO THE OXIDIZED CARBOHYDRATE MOIETY OF THE ANTIBODY MOLECULE	70
8.	EXAMPLES: SERIES III	71
8.1.	COMPLEMENT FIXATION ASSAYS	72
8.1.1.	PREPARATION OF HUMAN COMPLEMENT	73
8.1.2.	HEMOLYTIC ASSAY FOR COMPLEMENT FIXATION	73
8.1.3.	NON-HEMOLYTIC ASSAY FOR COMPLEMENT MEDIATED RELEASE OF AMC	74
9.	EXAMPLES: SERIES IV	75
9.1.	CLEAVAGE OF THE TRIPEPTIDE-AMC BY TRYPSIN AND UROKINASE	77
9.2.	CLEAVAGE OF TRIPEPTIDE-AMC DERIVATIVES BY UROKINASE, TRYPSIN, PLASMIN AND <u>PURIFIED</u> <u>COMPLEMENT</u> COMPONENTS C4,2 and C1S	79
9.3.	CLEAVAGE OF GLY-GLY-ARG-TYR* BY UROKINASE AND TRYPSIN	81
9.4.	CLEAVAGE OF A PLASMINOGEN ANALOG BY TRYPSIN AND UROKINASE	82
9.5.	CLEAVAGE OF A PURIFIED COMPLEMENT COMPONENT ANALOG	83
10.	EXAMPLES: SERIES V	84
10.1.	FORMATION OF ANTIBODY-GLY-GLY-ARG- TYR* CONJUGATES	84

10.2.	CLEAVAGE OF ANTIBODY-GLY-GLY-ARG-TYR* CONJUGATES BY TRYPSIN AND UROKINASE . . .	85
10.3.	ATTACHMENT OF THE ANTIBODY-GLY-GLY-ARG- TYR* CONJUGATES TO CELLS AND ENZYMATIC CLEAVAGE	86
10.4.	FORMATION AND CLEAVAGE OF CELL- ANTIBODY GLY-GLY-ARG-AMC	87
11.	EXAMPLES: PREPARATION OF PORPHYRIN DERIVATIVES	88
11.1.	PREPARATION OF DEUTEROPORPHYRIN DIHYDRAZIDE	88
11.2.	PREPARATION OF PROTOPORPHYRIN DIHYDRAZIDE	89
11.3.	PREPARATION OF HEMATOPORPHYRIN DIMETHYL ESTER	89
11.4.	PREPARATION OF HEMATOPORPHYRIN DIHYDRAZIDE	90
11.5.	PREPARATION OF FICOLL-HYDRAZIDE- HEMATOPORPHYRIN	90
12.	EXAMPLE: ATTACHMENT OF HEMATOPORPHYRIN DIHYDRAZIDE TO ANTIBODY	91
12.1.	PREPARATION OF ANTIBODY-HEMATOPORPHYRIN DIHYDRAZIDE CONJUGATES	91
12.2.	CYTOTOXICITY ASSAY USING THE ANTIBODY HEMATOPORPHYRIN DIHYDRAZIDE CONJUGATE	93
13.	EXAMPLES: PREPARATION OF ANTIBODY CONJUGATES VIA SULFHYDRYL ATTACHMENT	95
13.1.	HYDRAZIDE-FICOLL	95
13.2.	(4-IODOACETYL)-AMINOBENZOIC HYDRAZIDE- FICOLL	95

13.3.	(4-iodoacetyl)-aminobenziocydrazide FICOLL-ACETYLTHIO-IgG	96
13.4.	MALEIMIDE-HYDRAZIDE FICOLL	96
14.	EXAMPLES: PREPARATION OF ERYTHROSIN DERIVATIVES	97
14.1.	PREPARATION OF 5-ERYTHROSIN ISOTHIOCYANATE	97
14.2.	PREPARATION OF 5-ERYTHROSIN THIOSEMICARBAZIDE	98
14.3.	PREPARATION OF N-(2-AMINOETHYL) ERYTHROSIN 5-thiourea	98
14.4.	PREPARATION OF ERYTHROSIN-5- HYDRAZIDE	98
14.5.	PREPARATION OF FICOLL-HYDRAZIDE ERYTHROSIN	99

Description**1. FIELD OF THE INVENTION**

5 The present invention relates to the general area of antibody systems capable of delivering therapeutic agents to target sites *in vivo*. The therapeutic agents are covalently attached to antibodies or antibody fragments either through linkers or by direct attachment to form antibody conjugates. The antibody-therapeutic agent conjugates substantially retain the immunospecificity and immunoreactivity of the original antibody.

10 In a preferred embodiment the invention is directed to attachment of a therapeutic agent through a linker which may be either cleavable or non-cleavable. These antibody-therapeutic agent conjugates which comprise the therapeutic agent attached via the linker to the antibody molecule substantially retain the immunospecificity and immunoreactivity of the unconjugated antibody. Certain embodiments of the invention include attachment via linkers susceptible to cleavage by a proteolytic enzyme such that the resulting
15 conjugate retains the ability to bind antigen and activate complement. The invention also includes attachment via linkers susceptible to cleavage by urokinase, plasmin, trypsin, a tissue plasminogen activator or other enzymes having proteolytic activity. In all of these embodiments cleavage of the linker promotes the release of the therapeutic agent in an active or activatable form at the target site.

Another preferred embodiment of the invention relates to attachment of certain therapeutic agents to an
20 antibody molecule such that the resulting conjugate is delivered to a specific target site and the therapeutic agent is not released. The therapeutic agent may be activated at the target site.

Still another preferred embodiment relates to the attachment of an enzyme to an antibody molecule such that the resulting conjugate is delivered to a specific target site where the enzyme catalyzes reactions of therapeutic value.

25 The invention also relates to several methods for preparing such antibody-therapeutic agent conjugates, intermediates which are useful in preparing the conjugates, novel therapeutic agents, and methods for using such therapeutic agents.

2. BACKGROUND OF THE INVENTION

30 A variety of carrier molecules have been utilized with limited success in the delivery of therapeutic agents to a site of action. In practice the carrier should be non-toxic and target site specific. Ideally there should be a mechanism for maintenance or release of the active form of the therapeutic agent from the carrier at the target site.

2.1. CARRIER SYSTEMS

A number of agents have been utilized as carrier molecules with limited success in drug delivery systems. In practice the carrier should be non-toxic and target site specific. Ideally there should be a
40 mechanism for release of the active form of the drug from the carrier at the target site. Carrier molecules such as DNA, liposomes, proteins, steroid hormones and antibodies (whole antibody molecules or fragments) have been used in conjunction with a broad spectrum of pharmaceutical or cytotoxic agents such as: radioactive compounds (e.g., ¹²⁵I, ¹³¹I); agents which bind DNA, for instance, alkylating agents or various antibiotics; antimetabolites such as methotrexate; agents which act on cell surfaces (e.g., venom
45 phospholipases and microbial toxins); and protein synthesis inhibitors (e.g., diphtheria toxin and toxic plant proteins).

A number of investigators have reported target systems involving attachment of compounds or pharmaceutical agents directly to conventional antibodies, monoclonal antibodies, or to Fab portions of antibodies directed against tumor antigens. See Blythman et al., 1981, *Nature* 290:145-146; Davis and
50 Preston, 1981, *Science* 213:1385-1388; Hurwitz et al., 1979, *Int. J. Cancer* 24:461-470; U.S. Patent No. 4,093,607; and U.K. Patent No. 1,446,536. Urdal and Hakomori (1980, *J. Biol. Chem.* 255(21):10509-10579) describe an antibody targeted, avidin mediated, drug killing of tumor cells.

Although antibody carrier systems can be highly specific for the target site, a significant problem exists in that the therapeutic agent may not be released at that site. If release is necessary, the antibody-drug
55 conjugates must be internalized by the tumor cell. There, release would occur through cleavage by lysosomal enzymes. Additionally, the non-site specific linkage of the therapeutic agent to (random) sites on the antibody molecule may interfere with antigen binding capacity, thus reducing the effectiveness of the system.

2.2. COVALENT ATTACHMENT TO ANTIBODIES

A number of different reactions have been used to covalently attach compounds to antibodies. This has been accomplished by reaction of the amino acid residues of the antibody molecule, including the amine groups of lysine, the free carboxylic acid groups of glutamic and aspartic acid, the sulfhydryl groups of cysteine and the various moieties of the aromatic amino acids.

There are serious disadvantages to these methods of covalent attachment to the polypeptide backbone of an antibody molecule. The amino acid sequences of the light and heavy chains of immunoglobulins contain all of the amino acids relatively regularly and randomly dispersed throughout the molecule, including the antigen binding region. To the extent any chemical modification occurs in this antigen binding region, one has introduced a change in the recognition element of the antibody. Such changes would be expected to, and, in fact do, change the affinity and specificity of the antibody for antigen. In a population of different antibodies, such alteration in the antigen binding region results in complete inactivation of some antibodies and in lesser degrees of inactivation of others in relation to the proximity of the alterations to the antigen binding site. This inactivation may be due to a change within or very near the antigen binding site to alter the conformation of the binding site so as to make it unreactive, or may be due to a change in a region outside the antigen binding region so as to limit access of antigen to the antigen binding region. Methods involving amino acids which are relatively regularly and randomly dispersed throughout the antibody are referred to as non-site specific methods.

One of the most commonly used non-specific (random) methods of covalent attachment is the carbodiimide reaction to link a carboxy (or amino) group of a compound to amino (or carboxy) groups of the antibody. Additionally, bifunctional agents such as dialdehydes or imidoesters have been used to link the amino group of a compound to amino groups of the antibody molecule.

Some investigators have used the Schiff base reaction to link compounds to antibody molecules. This method involves the periodate oxidation of a drug or cytotoxic agent that contains glycol or hydroxy groups, thus forming an aldehyde which is then reacted with the antibody molecule. Attachment occurs via formation of a Schiff base with amino groups of the antibody molecule. Isothiocyanates have been used as coupling agents for covalently attaching compounds to antibodies. By this method fluorescent compounds have been attached to antibody molecules for use in fluorescence microscopy (Brandtzaeg, 1973, *Scand. J. Immunol.* 2:273-290) and cell sorting systems (Loken and Herzenberg, 1975, *Annals N.Y. Acad. Sci.* 254:163-171).

Interchain disulfide bonds can also be used as sites of covalent attachment. However, even if one is successful in selectively reducing only the interchain disulfide bonds, several functional properties of the antibody may be adversely affected, such as functional affinity, agglutination ability and the ability to fix complement.

2.3. CARRIER SYSTEMS USING MONOCLONAL ANTIBODIES

Monoclonal antibodies produced by the hybridoma technique of Kohler and Milstein (1975, *Natur* 256:495-497; 1976, *Eur J. Immunol.* 6:511-519) or related techniques provide distinct advantages for use as carriers for delivery of therapeutic agents to a site of action. First, monoclonal antibodies bind to only one molecular site (i.e., an epitope) with specific binding constants. Second, such antibodies are homogeneous and thus are purified with relative ease. Third, monoclonal antibodies can be made in large quantities by particular hybridoma cell lines.

The discovery of tumor-produced or tumor-associated antigens has allowed the preparation of monoclonal antibodies which are immune-specific for solid tumors such as human colon, breast, hepatoma, melanoma and germ cell tumors (see reviews by Carrasquillo *et al.*, 1984, *Cancer Treatment Repts.* 68:317-328; Kennel *et al.*, 1984, *Bio. Sci.* 34:150-156).

For example, Gilliland *et al.* have demonstrated the therapeutic feasibility of using anti-colorectal monoclonal antibodies conjugated to diphtheria toxin A (1980, *Proc. Natl. Acad. Sci. U.S.A.* 77:4539). In *in vitro* cytotoxic assays, nearly all of the carcinoma cells treated with this conjugate were killed.

2.4. PHOTORADIATION THERAPY

Advances in optics technology and greater understanding of photochemistry and photobiology have raised interest in the technique of photoradiation therapy for treating a variety of disease states. Photoradiation therapy using "hematoporphyrin derivative" (HpD) for photosensitization of tumor cells has been under development with some success for several years. Using HpD, patients have been treated for cancers such

as primary and metastatic skin cancers, lung, trachea, esophagus, bladder, brain, eye cancers and internal metastasis in the peritoneal cavity.

When light of the appropriate wavelength interacts with HpD, a cytotoxic mediator (i.e., the singlet oxygen) initiates chemical reactions which destroy tumor cells. Indeed, HpD seems to be preferentially taken up and retained by many tumors compared to adjacent tissues (see Dougherty, In Porphyrin Photosensitization, New York: Plenum Publishing Corp., 1983, pp. 3-13). In many cases it is possible to produce a selective effect on the tumor by exposing the tumor and surrounding area to light of the appropriate wavelength using a laser. The laser output beam may be connected to optical fibers of the appropriate size and applied either directly into the tumor or externally to the general location of the tumor.

Despite promising developments, however, photochemicals (e.g., hematoporphyrin and other photosensitizers) have several disadvantages for clinical use. First, there is great potential for damage to normal tissue if the areas adjacent to the tumor are not protected. There must be precise timing between drug administration and light exposure. A second disadvantage is that patients receiving photoradiation therapy are generally extremely sensitive to sunlight and must avoid exposure to the sun, frequently for as long as four weeks. Third, the dosage levels of photosensitizer required for therapy are very high and may have a negative effect on normal tissue.

The ideal photosensitizer should be designed so that it has greater tumor specificity, requiring a lower therapeutic dose level, hence mitigating the deleterious effect of higher doses. Greater tumor specificity leads to more efficient localization to the site of action and less opportunity for dispersal throughout the body.

Mew et al. have demonstrated the use of monoclonal antibody conjugated via carbodiimide bonding to hematoporphyrin as an anti-cancer agent *in vivo* and *in vitro* (1983, J. Immunol. 130:1473-1477).

3. SUMMARY OF THE INVENTION

According to the general method of the present invention, a therapeutic agent is covalently attached to an antibody or antibody fragment. The covalent attachment of the therapeutic agent is accomplished so that the resulting antibody conjugate retains the ability to bind antigen. In particular, such methods include attachment to oxidized carbohydrate moieties of antibodies or antibody fragments, or to the sulfhydryl groups of reduced antibodies or reduced (Fab')₂ fragments.

In particular, the invention concerns methods for preparing antibody-therapeutic agent conjugates, comprising:

- (a) reacting an antibody or antibody fragment with an oxidizing agent to form an aldehyde group in the carbohydrate moiety of the antibody or antibody fragment;
- (b) reacting the aldehyde group of the resultant oxidized antibody or antibody fragment with an amine group of a linker, said linker containing an amine group selected from the group consisting of primary amine, secondary amine, hydrazine, hydrazide, hydroxylamine, phenylhydrazine, semicarbazide and thiosemicarbazide groups, to form an antibody-linker intermediate having substantially the same immunoreactivity and immunospecificity as the unconjugated antibody or antibody fragment; and
- (c) covalently attaching the linker portion of the antibody-linker intermediate to a therapeutic agent to form an antibody-therapeutic agent conjugate.

In certain circumstances, it may be desirable to separate the above-described method for preparing antibody-therapeutic agent conjugates into two parts. The first part would produce an antibody-linker intermediate which may be considered a step in the production of the final antibody-therapeutic agent conjugate. Such antibody-linker intermediates may be stored for later combination with the particular therapeutic agent. Thus, the first part of the two part method would involve steps (a) and (b) above to form the intermediate antibody-linker intermediate. The second part, possibly at a later point in time, would involve covalently attaching the linker portion of the antibody-linker intermediate to a therapeutic agent to produce the final antibody-therapeutic agent conjugate.

Such antibody-therapeutic agent conjugates can also be made by alternate methods, as, for example, by first covalently attaching the linker to the therapeutic agent, and then reacting the antibody or antibody fragment with an amine group of the linker portion of the linker-therapeutic agent to form the antibody-therapeutic agent conjugate. Thus, the invention further includes a method for preparing an antibody-therapeutic agent conjugate, comprising:

- (a) reacting an antibody or antibody fragment with an oxidizing agent to form an aldehyde group in the carbohydrate moiety of the antibody or antibody fragment; and
- (b) reacting the aldehyde group of the resultant oxidized antibody or antibody fragment with a amine group of the linker portion of a linker-therapeutic agent intermediate, said linker-therapeutic agent

intermediate, comprising a linker containing an amine group selected from the group consisting of primary amine, secondary amine, hydrazine, hydrazide, hydroxylamine, phenylhydrazine, semicarbazide and thiosemicarbazide groups, and covalently attached to a therapeutic agent, to form an antibody-therapeutic agent conjugate having substantially the same immunoreactivity and immunospecificity as the unconjugated antibody or antibody fragment.

In either of the above embodiments, the linker may comprise a spacer element and a cleavable element. One function of the spacer element could be to position the cleavable element away from the core of the antibody molecule such that the cleavable element is more accessible to the enzyme responsible for cleavage. These embodiments would involve a method for preparing an antibody-therapeutic agent conjugate comprising:

- (a) reacting an antibody or antibody fragment with an oxidizing agent to form an aldehyde group in the carbohydrate moiety of the antibody or antibody fragment;
- (b) reacting the aldehyde group of the resultant oxidized antibody or antibody fragment with an amine group of a linker, said linker comprising a spacer element covalently attached to a cleavable element and said amine group located on said spacer element containing an amine group selected from the group consisting of primary amine, secondary amine, hydrazine, hydrazide, hydroxylamine, phenylhydrazine, semicarbazide and thiosemicarbazide groups, to form an antibody-linker intermediate having substantially the same immunoreactivity and immunospecificity as the unconjugated antibody or antibody fragment; and
- (c) covalently attaching the cleavable element of the antibody-linker intermediate to a therapeutic agent to form an antibody-therapeutic agent conjugate.

Alternately, the above-described method for preparing antibody-therapeutic agent conjugates may be separated into two distinct parts. The first part (steps (a) and (b) above) would produce an antibody-linker intermediate which may be stored for later combination with a therapeutic agent (step (c) above).

These antibody-therapeutic agent conjugates in which the linker comprises a spacer element and a cleavable element may also be made by first covalently attaching the linker to the therapeutic agent, and then reacting the antibody or antibody fragment with the linker portion of the linker-therapeutic agent to form the antibody-therapeutic agent conjugate. Thus, this method for preparing an antibody-therapeutic agent conjugate (having a linker comprising a spacer element and a cleavable element) comprises:

- (a) reacting an antibody or antibody fragment with an oxidizing agent to form an aldehyde group in the carbohydrate moiety of the antibody or antibody fragment; and
- (b) reacting the aldehyde group of the resultant oxidized antibody or antibody fragment with an amine group of a linker-therapeutic agent intermediate, said linker-therapeutic agent intermediate, comprising a spacer element covalently attached to a cleavable element and said amine group located on said spacer element and selected from the group consisting of primary amine, secondary amine, hydrazine, hydrazide, hydroxylamine, phenylhydrazine, semicarbazide and thio-semicarbazide groups, to form an antibody-therapeutic agent conjugate having substantially the same immunoreactivity and immunospecificity as the unconjugated antibody or antibody fragment.

Such antibody-therapeutic agent conjugates in which the linker comprises a spacer element and a cleavable element may be made by still other methods, for instance by first attaching the antibody to the spacer element, and then attaching the spacer element of that intermediate to a cleavable element of another intermediate comprising a cleavable element covalently attached to a therapeutic agent. Such methods comprise:

- (a) reacting an antibody or antibody fragment with an oxidizing agent to form an aldehyde group in the carbohydrate moiety of the antibody or antibody fragment;
- (b) reacting the aldehyde group of the resultant oxidized antibody or antibody fragment with a spacer element containing an amine group selected from the group consisting of primary amine, secondary amine, hydrazine, hydrazide, hydroxylamine, phenylhydrazine, semicarbazide and thio-semicarbazide groups, to form an antibody-spacer element intermediate having substantially the same immunoreactivity and immunospecificity as the unconjugated antibody or antibody fragment; and
- (c) covalently attaching the spacer element of the antibody-spacer element intermediate to a cleavable element of a cleavable element-therapeutic agent intermediate, to form an antibody therapeutic agent conjugate.

Still another method for preparing these antibody-therapeutic agent conjugates involves first preparing an antibody-spacer element intermediate, attaching to the spacer element of this intermediate a cleavable element to form an antibody-spacer element-cleavable element intermediate, and finally attaching to the cleavable element of this intermediate a therapeutic agent. This method comprises:

- (a) reacting an antibody or antibody fragment with an oxidizing agent to form an aldehyde group in the

carbohydrate moiety of the antibody or antibody fragment;

(b) reacting the aldehyde group of the resultant oxidized antibody or antibody fragment with a spacer element containing an amine group selected from the group consisting of primary amine, secondary amine, hydrazine, hydrazide, hydroxylamine, phenylhydrazine, semicarbazide and thio-semicarbazide groups, to form an antibody-spacer element intermediate having substantially the same immunoreactivity and immunospecificity as the unconjugated antibody or antibody fragment;

(c) covalently attaching the spacer element of the antibody-spacer element intermediate to a cleavable element to form an antibody-spacer element-cleavable element intermediate; and

(d) covalently attaching the cleavable element of the antibody-spacer element-cleavable element intermediate to a therapeutic agent to form an antibody-therapeutic agent conjugate.

Other permutations of the steps of the above-described methods may be developed from knowledge of one skilled in the art and the disclosure of this specification.

In certain instances, another function of the spacer element could be to add multiple functional sites for subsequent attachment of cleavable elements or therapeutic agents, or cleavable element-therapeutic agent intermediates. Thus, one may attach to an aldehyde (or sulfhydryl) of the antibody molecule a "branched spacer element" having multiple functional sites. Such sites may be aldehyde or sulfhydryl groups, or any chemical site to which a cleavable element, therapeutic agent or cleavable element-therapeutic agent intermediate may be attached.

Furthermore, it can readily be seen that these same methods are applicable to instances in which the therapeutic agent is not cleavable from the antibody, that is, when there is no cleavable element in the linker. In these embodiments, the linker could be a "branched linker" having multiple functional sites for attachment directly to a therapeutic agent. Again, the functional sites may be aldehyde or sulfhydryl groups, or any chemical site to which a therapeutic agent may be attached.

In all of the above embodiments, several linkers, including branched linkers, may be attached to the same antibody molecule to form conjugates having a large number of therapeutic agents per antibody molecule.

The invention is also directed to intermediates and final products of the above-described methods. In particular, this invention encompasses antibody-linker intermediates, which comprise a linker attached via a covalent bond to a carbohydrate moiety of an oxidized antibody or antibody fragment, said antibody-linker intermediate having substantially the same immunoreactivity and immunospecificity of the original antibody or antibody fragment. In such intermediates the linkers may comprise a spacer element (attached to the carbohydrate moiety) which, in turn, is covalently attached to a cleavable element.

The invention also relates to antibody-spacer element intermediates, cleavable element-therapeutic agent intermediates and linker-therapeutic agent intermediates described in the methods above. Intermediates in which the linker is not cleavable are also encompassed by the invention.

Further, the invention encompasses antibody-therapeutic agent conjugates which comprise a therapeutic agent covalently attached (directly or via a linker) to a carbohydrate moiety of an oxidized antibody or antibody fragment, said antibody-therapeutic agent conjugate having substantially the same immunoreactivity and immunospecificity as the unconjugated antibody or antibody fragment.

Also encompassed by the invention are corresponding intermediates and antibody-therapeutic agent conjugates in which the linker or therapeutic agent is attached to a sulfur atom of a reduced antibody or Fab' fragment. This embodiment of the invention involves a method for preparing an antibody-therapeutic agent conjugate, comprising:

(a) reacting an antibody or the (Fab')₂ fragment of an antibody with a mild reducing agent to form a reduced antibody or Fab' fragment having a sulfhydryl group;

(b) reacting said sulfhydryl group with a reactive group of a linker, said linker containing a reactive group selected from the group consisting of haloalkyl groups, p-mercuribenzoate groups, and groups capable of Michael-type addition reactions, to form an antibody-linker intermediate having substantially the same immunoreactivity and immunospecificity as the unconjugated antibody or (Fab')₂ fragment; and

(c) covalently attaching the linker portion of the antibody-linker intermediate to a therapeutic agent to form an antibody-therapeutic agent conjugate.

This method can be separated into two parts, the first part involving steps (a) and (b) above and the second step, separate in time, would involve producing the final conjugate as in step (c) above.

Alternatively, the same antibody-therapeutic agent conjugates can be made by another method, comprising:

(a) reacting an antibody or the (Fab')₂ fragment of an antibody with a mild reducing agent to form a reduced antibody or Fab' fragment having a sulfhydryl group; and

(b) reacting said sulfhydryl group with a reactive group of a linker-therapeutic agent intermediate, said

linker-therapeutic agent intermediate containing a reactive group selected from the group consisting of haloalkyl groups, p-mercuribenzoate groups, and groups capable of Michael-type addition reactions, and covalently attached to a therapeutic agent to form an antibody-therapeutic agent conjugate having substantially the same immunoreactivity and immunospecificity as the unconjugated antibody or (Fab')₂ fragment.

5 In either of the above embodiments, the linker may comprise a spacer element covalently attached to a cleavable element. As above, the spacer element would enable positioning of the cleavable element away from the core of the antibody molecule so that the cleavable element is more accessible to the cleaving enzyme. These embodiments involve methods comprising:

- 10 (a) reacting an antibody or the (Fab')₂ fragment of an antibody with a mild reducing agent to form a reduced antibody or Fab' fragment having a sulfhydryl group;
- (b) reacting said sulfhydryl group with a reactive group of a linker, said linker comprising a spacer element covalently attached to a cleavable element and said reactive group located on said spacer element and selected from the group consisting of haloalkyl groups, p-mercuribenzoate groups, and
- 15 groups capable of Michael-type addition reactions, to form an antibody-linker intermediate having substantially the same immunoreactivity and immunospecificity as the unconjugated antibody or (Fab')₂ fragment; and
- (c) covalently attaching the cleavable element antibody-linker intermediate to a therapeutic agent to form an antibody-therapeutic agent conjugate.

20 Clearly, the above-described method may be separated into two parts, the first involving steps (a) and (b), and the second involving step (c) above.

These antibody-therapeutic agent conjugates having a linker comprising a spacer element and a cleavable element may be made by first covalently attaching the linker to the therapeutic agent, followed by reacting the reduced antibody or Fab' fragment with the linker portion of the linker-therapeutic agent to form

25 the antibody-therapeutic agent conjugate. This method comprises:

- (a) reacting an antibody or the (Fab')₂ fragment of an antibody with a mild reducing agent to form a reduced antibody or Fab' fragment having a sulfhydryl group;
- (b) reacting the sulfhydryl group with a reactive group of a linker-therapeutic agent intermediate comprising a spacer element covalently attached to a cleavable element covalently attached to a
- 30 therapeutic agent and said reactive group located on said spacer element and selected from the group consisting of haloalkyl groups, p-mercuribenzoate groups, and groups capable of Michael-type addition reactions, to form an antibody-linker intermediate having substantially the same immunoreactivity and immunospecificity as the unconjugated antibody or (Fab')₂ fragment.

These antibody-therapeutic agent conjugates having a spacer element and a cleavable element may be made by still other methods, such as by first attaching the antibody to the spacer elements, and then attaching the spacer element of that intermediate to a cleavable element of another intermediate comprising a cleavable element covalently attached to a therapeutic agent. These methods comprise:

- (a) reacting an antibody or the (Fab')₂ fragment of an antibody with a mild reducing agent to form a reduced antibody or Fab' fragment having a sulfhydryl group;
- 40 (b) reacting said sulfhydryl group with a reactive group of a spacer element containing a reactive group selected from the group consisting of haloalkyl groups, p-mercuribenzoate groups, and groups capable of Michael-type addition reactions, to form an antibody-spacer element intermediate having substantially the same immunoreactivity and immunospecificity as the unconjugated antibody or (Fab')₂ fragment; and
- (c) covalently attaching the spacer element of the antibody-spacer element intermediate to a cleavable
- 45 element of a cleavable element-therapeutic agent intermediate to form an antibody therapeutic agent conjugate.

Still another method for preparing these antibody-therapeutic agent conjugates involves first preparing an antibody-spacer intermediate, followed by attaching to the spacer element of this intermediate a cleavable element to form an antibody-spacer element-cleavable element intermediate, and finally attaching

50 to the cleavable element of this intermediate a therapeutic agent. This method comprises:

- (a) reacting an antibody or the (Fab')₂ fragment of an antibody with a mild reducing agent to form a reduced antibody or Fab' fragment having a sulfhydryl group;
- (b) reacting said sulfhydryl group with a reactive group of a spacer element containing a reactive group selected from the group consisting of haloalkyl groups, p-mercuribenzoate groups, and groups capable
- 65 of Michael-type addition reactions, to form an antibody-spacer element intermediate having substantially the same immunoreactivity and immunospecificity as the unconjugated antibody or (Fab')₂ fragment; and
- (c) covalently attaching the spacer element of the antibody-spacer element intermediate to a cleavable element to form an antibody-spacer element-cleavable element intermediate having substantially the

same immunoreactivity and immunospecificity as the unconjugated antibody or (Fab')₂ fragment; and (d) attaching the cleavable element portion of an antibody-spacer element-cleavable element intermediate to a therapeutic agent.

5 Other permutations of the order of the steps of the above-described methods may be performed by one skilled in the art based upon this disclosure.

Additionally, spacer elements may have multiple functional sites for subsequent attachment of therapeutic agents, cleavable elements, or cleavable element-therapeutic agent intermediates. These functional sites may be aldehyde or sulfhydryl groups, or any chemical site to which the therapeutic agent, cleavable element or cleavable element-therapeutic agent may be attached.

10 Similarly, the above methods for attachment to sulfhydryl groups of antibodies are applicable to instances where non-cleavable linkers are employed, or where a "branched linker" is directly attached to a therapeutic agent.

In addition to all of these methods, the invention includes the intermediates of these methods in which the attachment is to a sulfur atom of an antibody molecule, including antibody-linker intermediates, antibody-spacer element intermediates, antibody-spacer element-cleavable element intermediates, linker-therapeutic agent intermediates, cleavable element-therapeutic agent intermediates. This includes intermediates and conjugates in which the linker is not cleavable.

The antibody-therapeutic agent conjugates comprise a therapeutic agent covalently attached (directly or through a linker) to a sulfur atom of a reduced antibody or Fab' fragment, said antibody-therapeutic agent conjugate having substantially the same immunoreactivity and immunospecificity as the unconjugated antibody or (Fab')₂ fragments.

The antibody-therapeutic agent conjugates of the invention are ideally suited for in vivo therapy. Delivery of therapeutic agents to specific target sites involves administering to an animal or human an effective amount of an antibody-therapeutic agent conjugate, wherein said antibody-therapeutic agent conjugate is immunoreactive with and immunospecific for an antigenic determinant of said specific tissue and substantially non-immunoreactive with and non-immunospecific for non-specific tissue and said antigenic determinant is not found in substantial amount in non-specific tissue.

This invention also encompasses the use of antibodies for delivery to specific cells, tissues, organs, or any other site in vivo, and the subsequent release or activation of the therapeutic agent at the target site. In one embodiment of the invention, release of the compound may be mediated by activated complement, a plasminogen activator, plasmin, a urokinase, trypsin, or another enzyme having proteolytic activity. In another embodiment of the invention, where release is not desired, photosensitive chemicals or enzymes that catalyze substrate modification with the production of cytotoxic by-products are attached to the antibody molecule.

35 In its most general concept, the invention contemplates site selective attachment of therapeutic agents to those areas of antibodies or antibody fragments which are not a part of nor directly involved with the antigenic site of the molecule. Thus, after selective attachment to one of these sites (located outside the antigen binding region), the antibody conjugate formed has substantially the same immunoreactivity and immunospecificity as the unconjugated antibody or antibody fragment.

40 Antibodies directed against any desired target (e.g., antigenic determinants of tumor cells, virus, fungi, bacteria or parasites) may be used as carrier molecules. Although conventional antibodies may be used as carrier molecules, monoclonal antibodies offer the advantages of increased specificity for antigen, improved efficiency of the delivery system and ease in production.

45 According to one method of the present invention, a therapeutic agent is attached to an antibody carrier molecule of an immunoglobulin class that is capable of complement activation. This attachment is accomplished via linkers which are susceptible to cleavage by an enzyme as enumerated above. One or more different therapeutic agents may be attached to each antibody molecule. The resulting antibody-therapeutic agent conjugate is administered to an individual. Subsequent to the binding of the antibody-therapeutic agent conjugate to antigen in vivo, the individual's serum complement is activated and the compounds will be selectively cleaved and released at the target site.

50 For release of a therapeutic agent by an enzyme other than those of the complement system, the same linker described supra may be attached to an antibody carrier molecule of a class that does not activate complement.

According to another method of the present invention, a photosensitizer is attached to an antibody carrier molecule either by a non-cleavable linker or by direct attachment to the antibody molecule. After delivery of the antibody conjugate to the target site, the photosensitizer is activated by light of the appropriate wavelength and its cytolytic effects on nearby cells are mediated through the generation of singlet oxygen molecules and oxygen free radicals.

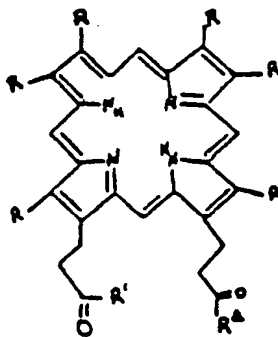
In an alternate embodiment of the present invention, cleavage of the linker at the target site may not be desirable. The linker utilized may be insensitive to serum proteins or the antibody molecule may be of a class or type that does not activate complement.

For the delivery of certain compounds, e.g., hormones or neurotransmitters, it may be desirable to cleave the compound without activation of the complement cascade. One may use a urokinase, tissue plasminogen activator, plasmin, trypsin or a protease - sensitive linker attached to an antibody that does or does not fix complement.

For the practice of this invention it is desirable to attach the therapeutic agent to the antibody molecule without interfering with either the antigen binding capacity of the antibody, with the ability to activate complement (also called complement fixation), or with enzyme cleavage or photoactivation of the therapeutic agent or with the process of conversion of enzyme substrates into cytotoxic by-products by the therapeutic agent. The present invention describes the novel linkers and methods of attachment which may be used to attach therapeutic agents to any antibody capable of activating complement.

Accordingly the object of the present invention is an aqueous soluble antibody-therapeutic agent conjugate for a medical use, comprising: a therapeutic agent capable of acting as a photosensitizer, attached, either directly or via a linker, through a covalent bond to an antibody or antibody fragment to form an antibody-therapeutic agent conjugate having substantially the same immunoreactivity and immunospecificity as the unconjugated antibody or antibody fragment, wherein the covalent bond is selectively formed at a site located outside the antigen binding region of the antibody or antibody fragment and is formed between an amino group of the photosensitizer or linker and an aldehyde group of an oxidized carbohydrate moiety of an antibody or antibody fragment, and in which the therapeutic agent is a compound of the formula :

25

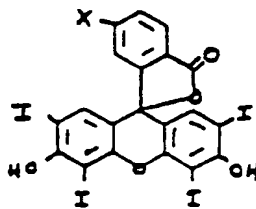


30

35

Wherein R is selected from the group consisting of an alkyl containing from 1 to 3 carbon atoms, a hydroxy alkyl containing from 1 to 3 carbon atoms, a carboxyl, an alkyl carboxyl in which the alkyl contains from 1 to 3 carbon atoms, a vinyl and an H, and R¹ and R² are NHHN₂, or R¹ is OH and R² is NHHN₂, or R¹ is NHHN₂ and R² is OH ; or in which the therapeutic agent is a compound of the formula :

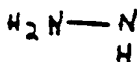
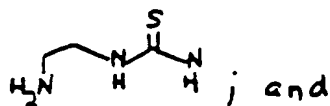
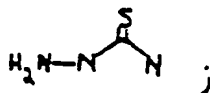
45



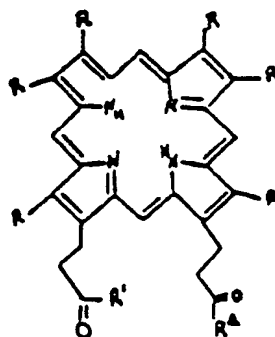
50

wherein X is selected from the group consisting of

55

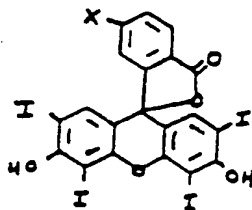


20 Another object of the present invention is the above antibody-therapeutic agent conjugate wherein the therapeutic agent is an amine containing porphyrin compound of the formula :



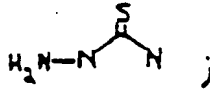
wherein R is selected from the group consisting of an alkyl containing from 1 to 3 carbon atoms, a hydroxy alkyl containing from 1 to 3 carbon atoms, a carboxyl, an alkyl carboxyl in which the alkyl contains from 2 to 3 carbon atoms, a vinyl and an H, and R¹ and R² are NHHH₂, or R¹ is OH and R² is NHHH₂, or R¹ is NHHH₂ and R₂ is OH.

40 Another object of the present invention is an above antibody-therapeutic wherein the therapeutic agent is an amine containing erythrosin-derivative of the formula :

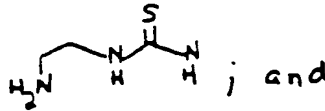


wherein X is selected from the group consisting of

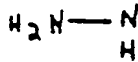
55



5



10



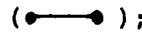
15

20 4. BRIEF DESCRIPTION OF THE FIGURES

The present invention may be more fully understood by reference to the following detailed description of the invention, examples of specific embodiments of the invention and the appended figures in which FIG. 1 depicts a general reaction scheme for the attachment of the antineoplastic drug, Alk ran (Burroughs-Wellcome), to the peptide CBZ-gly-gly-arg.

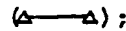
25

FIG. 2 represents Sips plots of fluorescent quenching data using unmodified antibody



30

antibody modified by the method of the invention



35

and antibody modified by attachment (carbodiimide) to aspartic and/or glutamic amino acids



40

FIG. 3 represents the excitation spectra for (a) unoxidized antibody and (b) antibody oxidized in accordance with Section 7.1.

FIG. 4 represents the excitation and emission spectra of the Phenylhydrazide-Triptide-AMC compound prepared in accordance with Section 7.2.

45

FIG. 5 represents the excitation and emission spectra of the Antibody-Phenylhydrazide-Triptide-AMC (APTA) conjugate prepared in accordance with Section 7.3.

FIG. 6 represents the results of experiments showing the specific complement mediated release of AMC along with certain controls. Fluorescence was monitored at 460 nm with excitation at 380 nm. An increase in fluorescence indicates release of AMC from the Antibody-Phenylhydrazide-Triptide-AMC (APTA) conjugate; (a) represents APTA conjugate incubated with glutaraldehyde-fixed sheep red blood cells and human complement; (b) represents APTA conjugate incubated with glutaraldehyde-fixed rat red blood cells and human complement; (c) represents APTA conjugate incubated with glutaraldehyde-fixed sheep red blood cells; (d) represents APTA conjugate alone.

50

55 5. DETAILED DESCRIPTION OF THE INVENTION

The present invention concerns antibody-therapeutic agent conjugates prepared by attaching a therapeutic agent to an antibody or antibody fragment directed against a target antigen. The therapeutic agent is

attached either directly or via a linker to the antibody or antibody fragment. Such therapeutic agents or linkers are selectively attached to those areas of antibodies or antibody fragments which are not a part of nor directly involved with the antigen binding site of the molecule.

5 5.1. ANTIBODIES

According to the present invention, antibodies directed against any antigen or hapten may be used. Although conventional antibodies may be used, monoclonal antibodies offer several advantages. Each monoclonal antibody is specific for one antigenic determinant. Additionally, large amounts of each monoclonal antibody can be produced.

Antibodies used in the present invention may be directed against any determinant, e.g., tumor, bacterial, fungal, viral, parasitic, mycoplasmal, histocompatibility, differentiation and other cell membrane antigens, pathogen surface antigens, toxins, enzymes, allergens, drugs and any biologically active molecules.

For a more complete list of antigens, see U.S. Patent 4,193,983, particularly columns 7-11, which patent specification is incorporated herein by reference.

Additionally, a combination of antibodies reactive to different antigenic determinants may be used.

When delivery and release of the compound attached to the antibody are desired, immunoglobulin classes that are known to activate complement are used. In other applications, carrier immunoglobulins may be used which are not capable of complement activation. Such immunoglobulin carriers may include: certain classes of antibodies such as IgM, IgA, IgD, IgE; certain subclasses of IgG; or certain fragments of immunoglobulins, e.g., half antibody molecules (a single heavy: light chain pair), or Fab, Fab' or (Fab')₂ fragments.

Use of antibody fragments may be advantageous for delivery of therapeutic agents because these antibody fragments permeate target sites at an increased rate. The Fab' fragments of IgG immunoglobulins are obtained by cleaving the antibody molecule with pepsin [resulting in a bivalent fragment, (Fab')₂] or with papain [resulting in 2 univalent fragments, (2 Fab)]. Parham, 1983, J. Immunol. 131: 2895-2902; Lamoyi and Nisonoff, 1983, J. Immunol. Meth. 56: 235-243. The bivalent (Fab')₂ fragment can be split by mild reduction of one or a few disulfide bonds to yield univalent Fab' fragments. The Fab and (Fab')₂ fragments are smaller than a whole antibody molecule and, therefore, permeate the target site or tissue more easily. This may offer an advantage for in vivo delivery since conjugates will more readily penetrate in vivo sites (e.g., tumor masses, infection sites, etc.). An additional advantage is obtained when using conjugates formed with antibody fragments because these fragments do not cross a placental barrier. As a result, using this embodiment of the present invention, a therapeutic agent may be delivered at an in vivo site (such as a tumor) to a pregnant female without exposing the fetus to the compound.

35 5.2. METHODS FOR ATTACHING THERAPEUTIC AGENTS TO ANTIBODIES AND ANTIBODY FRAGMENTS

The present invention utilizes several methods for attaching therapeutic agents to antibody molecules such as (a) attachment to the carbohydrate moieties of the antibody or antibody fragment, or (b) attachment to sulfhydryl groups of the antibody or antibody fragment. Whichever method is used, the attachment must not significantly change the essential characteristics of the antibody or antibody fragment, such as immunospecificity and immunoreactivity. Additional considerations include simplicity of reaction and stability of the antibody conjugate produced.

45 5.2.1. ATTACHMENT TO OXIDIZED CARBOHYDRATE MOIETIES

Glycoproteins are biologically important macromolecules which share structural characteristics including carbohydrate residues covalently attached to a polypeptide backbone. Since antibodies are glycoproteins, compounds may be attached to the carbohydrate moiety of the molecule. Some of the carbohydrate moieties are located on the Fc region of the immunoglobulin and are required in order for C1 binding to occur. The carbohydrate moiety of the Fc region of an immunoglobulin may be utilized in the scheme described herein. Alternatively, the Fab or Fab' fragments of any immunoglobulins which contain carbohydrate moieties may be utilized in the reaction scheme described herein. An example of such an immunoglobulin is the human IgM sequenced by Putnam et al. (1973, Science 182: 287).

As explained in detail below, the carbohydrate side chains of antibodies or Fab or Fab' fragments may be selectively oxidized to generate aldehydes. The resulting aldehydes may then be reacted with amine groups (e.g., ammonia derivatives such as primary amine, secondary amine, hydroxylamine, hydrazine,

hydrazide, phenylhydrazine, semicarbazide or thiosemicarbazide) to form a Schiff base or reduced Schiff base (e.g., imine, enamine, oxime, hydrazone, phenylhydrazone, semicarbazone, thiosemicarbazone or reduced forms thereof).

Alternatively, the carbohydrate moiety of the antibody may be modified by enzymatic techniques so as to enable attachment to or reaction with other chemical groups. One example of such an enzyme is galactose oxidase which oxidized galactose in the presence of oxygen to form an aldehyde.

5.2.1.1. CHEMICAL METHODS OF OXIDATION

Oxidation of the carbohydrate portion or moiety of antibody molecules leads to formation of aldehyde groups. A variety of oxidizing agents can be used, such as periodic acid, paraperiodic acid, sodium metaperiodate and potassium metaperiodate. Among these, oxygen acids and salts thereof are preferred since secondary or undesirable side reactions are less frequent. For a general discussion, see Jackson, 1944, IN Organic Reactions 2, p. 341; Bunton, 1965, Oxidation in Organic Chemistry, Vol. 1 (Wiberg, ed.), Academic Press, New York, p. 367.

Oxidation of antibodies with these oxidizing agents can be carried out by known methods. In the oxidation, the antibody is used generally in the form of an aqueous solution, the concentration being generally less than 100 mg/ml, preferably 1 to 20 mg/ml. When an oxygen acid or a salt thereof is used as the oxidizing agent, it is used generally in the form of an aqueous solution, and the concentration is generally 0.001 to 10 mM and preferably 1.0 to 10 mM. The amount of the oxygen acid or salt thereof depends on the kind of antibody, but generally it is used in excess, for example, twice to ten times as much as the amount of the oxidizable carbohydrate. The optimal amount, however, can be determined by routine experimentation.

In the process for oxidizing antibodies with oxygen acids or salts thereof, the optional ranges include a pH of from about 4 to 8, a temperature of from 0° to 37° C, and a reaction period of from about 15 minutes to 12 hours.

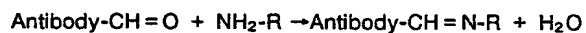
During the oxidation of the glycoprotein with an oxygen acid or a salt thereof, light is preferably excluded to prevent over oxidation of the glycoprotein.

5.2.1.2. ENZYMATIC METHODS OF OXIDATION

Oxidation of the carbohydrate portion of antibody molecules may also be done with the enzyme, galactose oxidase (Cooper et al., 1959, J. Biol. Chem. 234: 445-448). The antibody is used in aqueous solution, the concentration being generally 0.5 to 20 mg/ml. The enzyme generally is used at about 5 to 100 units per ml of solution, at a pH ranging from about 5.5 to about 8.0. The influence of pH, substrate concentration, buffers and buffer concentrations of enzyme reaction are reported in Cooper et al., supra.

5.2.1.3. PREPARATION OF ANTIBODY-THERAPEUTIC AGENT CONJUGATES

The antibody conjugates (or antibody linker-intermediates) of the invention may be produced by reacting the oxidized antibody with any linker or therapeutic agent having an available amine group selected from the group consisting of primary amine, secondary amine, hydrazine, hydrazide, hydroxylamine, phenylhydrazine, semicarbazide and thiosemicarbazide groups. The immediately resulting products contain a carbon-nitrogen double bond resulting from elimination of a molecule of water from the initial addition products:



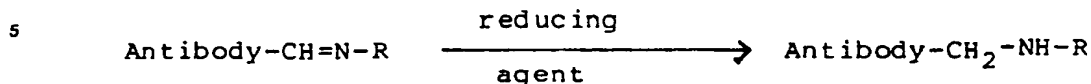
For a general discussion of the reaction of aldehydes with hydrazides, see March, 1978, IN Advanced Organic Chemistry: Reactions Mechanisms and Structure, McGraw-Hill Co., New York, pp. 824-825.

A solution of the oxidized antibody at a concentration of from about 0.5 to 20 mg/ml is mixed with the therapeutic agent or linker (molar ratios of reactive amine group to antibody aldehyde ranging from about 1 to about 10,000) and the solution incubated for from about 1 to 18 hours. Suitable temperatures are from 0 to 37° C and pH may be from about 6 to 8.

5.2.1.4. STABILIZATION OF THE ANTIBODY CONJUGATES

After the antibody-therapeutic agent conjugates (or antibody-linker intermediates) have been formed

between the antibody and therapeutic agent or linker as described in Section 5.2.1.3, they can optionally be stabilized with a suitable reducing agent, such as sodium cyanoborohydride or sodium borohydride:



Reducing agent is generally added to a molar excess of from about 10 to 100 fold molar excess over available aldehyde groups. For a general discussion, see Jentoft and Dearborn, 1979, J. Biol. Chem. 254:4359.

5.2.2. ATTACHMENT TO SULFHYDRYL GROUPS

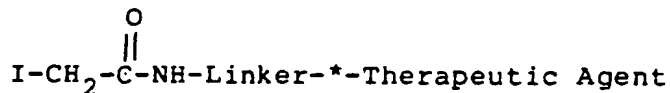
Free sulfhydryl groups can be generated from the disulfide bonds of the immunoglobulin molecule. This is accomplished by mild reduction of the antibody molecule. The disulfide bonds of IgG which are generally most susceptible to reduction are those that link the two heavy chains. The disulfide bonds located near the antigen binding region of the antibody molecule remain relatively unaffected. Such reduction results in the loss of ability to fix complement but does not interfere with antibody-antigen binding ability (Karush et al., 1979, Biochem. 18:2226-2232). The free sulfhydryl groups generated in the intra-heavy chain region can then react with reactive groups of a linker or therapeutic agent to form a covalent bond which does not interfere with the antigen binding site of the immunoglobulin. Such reactive groups include, but are not limited to, reactive haloalkyl groups (including, for example, haloacetyl groups), p-mercuribenzoate groups and groups capable of Michael-type addition reactions (including, for example, maleimides and groups of the type described in Mitra and Lawton, 1979, J. Amer. Chem. Soc. 101: 3097-3110). By the term "haloalkyl" is meant any alkyl group of one to three carbon atoms substituted with bromine, iodine or chlorine.

Details of the conditions, methods and materials suitable for mild reduction of antibodies and antibody fragments as described generally herein may be found in Stanworth and Turner, 1973, IN Handbook of Experimental Immunology, Vol. 1, Second Edition, Weir (ed.), Chapter 10, Blackwell Scientific Publications, London, which chapter is incorporated herein by reference.

Antibody-therapeutic agent conjugates (or antibody-linker intermediates) which are produced by attachment to free sulfhydryl groups of reduced immunoglobulin or reduced antibody fragments do not activate complement. Thus, these conjugates may be used in *in vivo* systems where cleavage and release of the therapeutic agent is not desirable (e.g., where the therapeutic agent is a photosensitizer, or an enzyme that acts on a specific substrate). Such conjugates may also be used when non-complement mediated release is desired. In such an embodiment, the therapeutic agent may be linked to sulfhydryl groups on the reduced immunoglobulin or reduced antibody fragments via linkers which are susceptible to cleavage by enzymes having proteolytic activity, including but not limited to trypsin, urokinase, plasmin, tissue plasminogen activator and the like.

Although attachment of a therapeutic agent to sulfhydryl groups of the antibody molecule destroys the complement fixation ability of the conjugate, such methods of attachment may be used to make antibody conjugates for use in the complement-mediated release system. In such an embodiment, a therapeutic agent joined to a complement-sensitive substrate linker can be attached to sulfhydryls of reduced IgG molecules or antibody fragments and delivered to the target in a mixture with intact antibody molecules that are capable of activating complement. The latter would activate complement which would cleave the therapeutic agent from the former. The use of antibody fragments as carrier molecules in the complement mediated release system would permit the treatment of pregnant females, and offers the advantage of more rapid penetration of the conjugate into target sites.

According to one embodiment of the present invention, for attachment to sulfhydryl groups of reduced antibody molecules, the substrate linkers or the therapeutic agents are modified by attaching an iodoalkyl group to one end of the linker. The unmodified site on the linker may or may not be covalently attached to a therapeutic agent. For instance, the substrate linkers which are ester or amide linked to therapeutic agents as prepared in Section 5.3 (see Table II and Table III) are modified by the addition of an iodoalkyl group thus forming an iodoalkyl derivative as depicted below (N.B., the symbol * signifies an amide or ester bond):

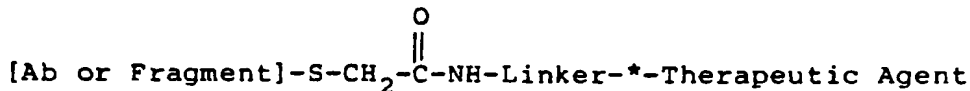


6

As mentioned previously, the linker may be one that is susceptible or resistant to cleavage by activated complement, trypsin, plasmin, tissue plasminogen activator, urokinase or another specific enzyme having proteolytic activity.

When the iodoalkyl derivatives of the linker group are reacted with reduced antibody molecules or reduced antibody fragments, the linker group becomes covalently attached to the antibody molecules or fragment. This is depicted below (N.B. the symbol * signifies as amide or ester bond):

15



20 5.3. THERAPEUTIC AGENTS

Antibodies may be attached to any therapeutic agent which retains its essential properties after reaction with the antibody, and which enables the antibody to substantially retain immunospecificity and immunoreactivity. As used herein, the term "therapeutic agent" includes chemical modifications and derivatives of therapeutic agents which substantially retain their biological activity. The major limiting factor is that any attachment reaction must be selective enough to limit competing, undesirable reactions and sufficiently mild so as not to severely interfere with antibody reactivity and selectivity.

When it is desired to attach an aldehyde of the oxidized carbohydrate portion of an antibody or antibody fragment to a therapeutic agent, the therapeutic agent should contain an amine group selected from the group consisting of primary amine, secondary amine, hydrazine, hydrazide, hydroxylamine, phenylhydrazine, semicarbazide and thiosemicarbazide groups. If the therapeutic agent does not contain any such amino group, the agent can be modified to introduce a suitable amine group available for coupling.

The therapeutic agent to be attached to an antibody for use in a delivery system is selected according to the purpose of the intended application (i.e., killing, prevention of cell proliferation, hormone therapy or gene therapy). Such therapeutic agents may include, for example, pharmaceutical agents, toxins, fragments of toxins, alkylating agents, enzymes, antibiotics, antimetabolites, antiproliferative agents, hormones, neurotransmitters, DNA, radioopaque dyes, radioactive isotopes, fluorogenic compounds, marker compounds, lectins, compounds which alter cell membrane permeability, and photochemical compounds. Table I lists some of the pharmaceutical agents that may be employed in the herein described invention and in no way is meant to be an exhaustive list. Finally, combinations of therapeutic agents may be used.

45

50

55

TABLE I
EXAMPLES OF THERAPEUTIC AGENTS FOR ANTIBODY-MEDIATED DELIVERY

5	NAME/CLASS	LINKAGE	MANUFACTURERS(S)
	I. ANTIBACTERIALS		
	Aminoglycosides		
10	Streptomycin	ester/amide	Dow, Lilly, Dome, Pfipharmics
	Neomycin	ester/amide	
	Kanamycin	ester/amide	Bristol
	Amikacin	ester	Bristol
	Gentamicin	ester/amide	Upjohn, Wyeth, Schering
15	Tobramycin	ester/amide	Lilly
	Streptomycin B	ester/amide	Squibb
	Spectinomycin	ester	Upjohn
	Ampicillin	amide	Squibb, Parke-Davis, Cmer, Wyeth, Upjohn, Bristol, SKF
20	Sulfanilamide	amide	Merrell-National
	Polymyxin	amide	Burroughs-Wellcome, Dow, Parke-Davis
	Chloramphenicol	ester	Parke-Davis
25	II. ANTIVIRALS		
	Acyclovir		Burroughs-Wellcome
	Vira A	ester/amide	Parke-Davis
	Symmetrel	amide	Endo
30	III. ANTIFUNGALS		
	Nystatin	ester	Squibb, Primo, Lederle, Pfizer, Holland-Rantor
	IV. ANTINEOPLASTICS		
35	Adriamycin	ester/amide	Adria
	Cerubidine	ester/amide	Ives
	Bleomycin	ester/amide	Bristol
	Alkeran	amide	Burroughs-Wellcome
	Valban	ester	Lilly
40	Oncovin	ester	Lilly
	Fluorouracil	ester	Adria, Roche, Herbert
	Methotrexate	amide	Lederle
	Thiotepa	-	Lederle
	Bisantrone	-	Lederle
45	Novantrone	ester	Lederle
	Thioguanine	amide	Burroughs-Wellcome
	Procarabazine	-	Hoffman La Roche
50	Cytarabine	-	Upjohn

55

V. RADIOPHARMACEUTICALS

125_I
 131_I
 99^mTc (Technetium)

VI. HEAVY METALS

Barium
 Gold
 Platinum

VII. ANTIMYCOPLASMAALS

Tylosine
 Spectinomycin

According to one embodiment of the present invention, photochemicals including photosensitizers and photothermolytic agents may be used as therapeutic agents. Efficient photosensitizers include, but are not limited to porphyrins and modified porphyrins (e.g., hematoporphyrin, hematoporphyrin dihydrazide, deuteroporphyrin dihydrazide and protoporphyrin dihydrazide), rose bengal, acridines, thiazines, xanthenes, anthraquinones, azines, flavin and nonmetal-containing porphyrins, porphyrin-like compounds, methylene blue, eosin, erythrosin, psoralin and the like. Other photosensitizers include, but are not limited to tetracyclines (e.g., dimethylchlor tetracycline) sulfonamides (e.g., sulfanilamide), griseofulvin, phenothiazines, (e.g., chlorpromazine), thiazides, sulfonylurea, and many others. Photochemicals may be designed or synthetically prepared to absorb light at specific wavelengths. Photothermolytic agents, such as Azure A, which are activated at the site of action by a light source (see Anderson and Parrish, 1983, Science 220: 524-527) may be utilized as therapeutic agents.

According to another embodiment of the present invention, enzymes that catalyze substrate modification with the production of cytotoxic by-products may be used as therapeutic agents. Examples of such enzymes include but are not limited to glucose oxidase, galactose oxidase, xanthene oxidase and the like.

5.4. LINKERS

According to the invention, antibodies may be covalently attached to a therapeutic agent through an intermediate linker having at least two reactive groups, one to react with antibody and one to react with the therapeutic agent. The linker, which may include any compatible organic compound, must be chosen such that the reaction with antibody (or therapeutic agent) does not adversely affect antibody reactivity and selectivity. Furthermore, the attachment of linker to therapeutic agent must not destroy the activity of the therapeutic agent. Suitable linkers for reaction with oxidized antibodies or oxidized antibody fragments include those containing an amine selected from the group consisting of primary amine, secondary amine, hydrazine, hydrazide, hydroxylamine, phenylhydrazine, semicarbazide and thiosemicarbazide groups. Such reactive functional groups may exist as part of the structure of the linker, or may be introduced by suitable chemical modification of linkers not containing such groups.

According to the present invention, suitable linkers for attachment to reduced antibodies or antibody fragments include those having certain reactive groups capable of reaction with a sulfhydryl group of a reduced antibody or Fab' fragment. Such reactive groups include, but are not limited to: reactive haloalkyl groups (including, for example, haloacetyl groups), p-mercuribenzoate groups and groups capable of Michael-type addition reactions (including, for example, maleimides and groups of the type described by Mitra and Lawton, 1979, J. Amer. Chem. Soc. 101: 3097-3110). By the term "haloalkyl" is meant any alkyl group of one to three carbon atoms substituted with bromine, iodine or chlorine.

The therapeutic agent may be attached to the linker before or after the linker is attached to the antibody molecule. In certain applications it may be desirable to first produce an antibody-linker intermediate in which the linker is free of an associated therapeutic agent. Depending upon the particular application, a specific therapeutic agent may then be covalently attached to the linker.

5.4.1. BRANCHED LINKERS

Of additional interest are "branched linkers" which have multiple sites for attachment of therapeutic agents. For multiple site linkers, a single covalent attachment to an antibody or antibody fragment would result in an antibody-linker intermediate capable of binding a therapeutic agent at a number of sites. The sites may be aldehyde or sulfhydryl groups or any chemical site to which therapeutic agents can be attached.

Alternatively, higher specific activity (or higher ratio of therapeutic agents to antibody molecule) can be achieved by attachment of a single site linker at a plurality of sites on the antibody or antibody fragment. This plurality of sites may be introduced into the antibody or antibody fragment by either of two methods. First, one may generate multiple aldehyde groups and/or sulfhydryl groups in the same antibody molecule. Second, one may attach to an aldehyde or sulfhydryl of the antibody molecule a "branched linker" having multiple functional sites for subsequent attachment to linkers. The functional sites of the branched linker or multiple site linker may be aldehyde or sulfhydryl groups, or may be any chemical site to which linkers may be attached. Still higher specific activities may be obtained by combining these two approaches, that is, attaching multiple site linkers at several sites on the antibody or antibody fragment.

5.4.2. CLEAVABLE LINKERS

Peptide linkers which are susceptible to cleavage by enzymes of the complement system, urokinase, tissue plasminogen activator, trypsin, plasmin, or another enzyme having proteolytic activity may be used in one embodiment of the present invention. According to one method of the present invention, a therapeutic agent is attached via a linker susceptible to cleavage by complement. The antibody is selected from a class which can activate complement. The antibody-therapeutic agent conjugate, thus, activates the complement cascade and releases the therapeutic agent at the target site. According to another method of the present invention, attachment of a therapeutic agent to an antibody via sulfhydryl groups destroys the ability of the antibody therapeutic agent to activate complement. If release by complement is desired, another immunoglobulin directed to the target site and capable of complement activation must be administered in combination with the antibody-therapeutic agent conjugate. According to another method of the present invention, a therapeutic agent is attached via a linker susceptible to cleavage by enzymes having a proteolytic activity such as a urokinase, a tissue plasminogen activator, plasmin, or trypsin.

In addition therapeutic agents may be attached via disulfide bonds (for example, the disulfide bonds on a cystine molecule) to the antibody molecule. Since many tumors naturally release high levels of glutathione (a reducing agent) this can reduce the disulfide bonds with subsequent release of the therapeutic agent at the site of delivery.

5.4.3. SPACERS AND CLEAVABLE ELEMENTS

In still another embodiment, it may be necessary to construct the linker in such a way as to optimize the spacing between the therapeutic agent and the antibody. This may be accomplished by use of a linker of the general structure:



wherein

- W is either -NH-CH₂- or -CH₂-;
 Q is an amino acid, peptide; and
 n is an integer from 0 to 20.

In still other embodiments, the linker may comprise a spacer element and a cleavable element. The spacer element serves to position the cleavable element away from the core of the antibody molecule such that the cleavable element is more accessible to the enzyme responsible for cleavage. Certain of the "branched linkers" described above may serve as spacer elements.

Throughout this discussion, it should be understood that the attachment of linker to therapeutic agent (or of spacer element to cleavable element, or cleavable element to therapeutic agent) need not be particular mode of attachment or reaction. Any reaction providing a product of suitable stability and biological compatibility is acceptable.

5.4.4. SERUM COMPLEMENT AND SELECTION OF LINKERS

According to one method of the present invention, when release of a therapeutic agent is desired, an

antibody of a class which can activate complement is used. The resulting retains the ability to bind antigen and activate the complement cascade.

Complement is the collective name for a group of serum proteins which can be activated in one of two ways, the classical pathway and the properdin pathway (Müller-Eberhard, Hospital Practice, August 1977:33-43). The classical pathway is initiated by the binding of antibodies of the IgM class or certain subclasses of IgG to its corresponding antigen whereas the properdin pathway is dependent upon the serum protein, properdin and other non-immunoglobulin serum factors (Reid and Porter, 1981, Ann. Rev. Biochem. 50:433-464).

The classical pathway is a pathway of particular importance of the practice of the present invention. The classical pathway is characterized by the formation of certain antibody-antigen complexes (or immune complexes) which activate the proteolytic enzymes of the complement system (Borsos and Rapp, 1965, J. Immunol. 95:559-566; Cohen, 1968, J. Immunol. 100:407-413; Cohen and Becker, 1968, J. Immunol. 100:403-406; Ishizaka et al., 1968, J. Immunol. 100:1145-1153). These activated complement enzymes cleave and activate other components of the complement cascade. Ultimately the formation of an "attack complex" (or lytic complex) is induced resulting in disruption of target cell membrane integrity.

The first component activated in the classical pathway is C1 which becomes a protease that acts on both C2 and C4. Activated C1 (C1 $\bar{2}$) has a specific esterase activity. Activated C4,2 (C4,2) sometimes called C3 convertase, is a complex which proteolytically cleaves C3, and together with activated C3 (C3b), cleaves C5. Cleavage of C3 is the first step in common between the classical and properdin pathways of complement activation.

The enzymatic activities of both C1 $\bar{2}$ and C4,2 have been studied *in vitro* with synthetic peptide substrates (see Table II) which are cleaved at a carboxy terminal ester or amide bond. These synthetic peptide substrates may be used as linkers between an antibody molecule and a therapeutic agent as described in the present invention, or as cleavable elements of linkers having a spacer element and a cleavable element. Such linkers may allow for the specific complement mediated cleavage and subsequent release of the therapeutic agent in its active form at the target site. However, any substrate which is susceptible to cleavage by any of the components of complement, trypsin, tissue plasminogen activator, urokinase, plasmin, or any enzyme having proteolytic activity may be used as a linker.

Thus, according to this embodiment of the present invention, a therapeutic agent is joined to one end of the cleavable linker or cleavable element and the other end of the linker group is attached to a specific site on the antibody molecule. For example, if the therapeutic agent has a hydroxy group or an amino group, it may be attached to the carboxy terminus of a peptide, amino acid or other suitably chosen linker via an ester or amide bond, respectively. For example, such agents may be attached to the linker peptide via a carbodiimide reaction. If the therapeutic agent contains functional groups that would interfere with attachment to the linker, these interfering functional groups can be blocked before attachment and deblock once the product conjugate or intermediate is made. For example, FIG. 1 depicts a general reaction scheme for the attachment of the antineoplastic drug, Alkeran (Burroughs-Wellcome) to the peptide CBZ-gly-gly-arg. The opposite or amino terminus of the linker is then used either directly or after further modification for binding to an antibody molecule which is capable of activating complement.

Linkers (or spacer elements of linkers) may be of any desired length, one end of which can be covalently attached to specific sites on the antibody molecule. The other end of the linker or spacer element may be attached to an amino acid or peptide linker. Table III lists some cleavable elements that may be used as linker groups to prepare the antibody-therapeutic agent conjugates of the present invention. (In the table n may be an integer including zero.) These sequences were derived from those of the complement substrate sequences by substituting amino acids with similar acid-base properties. This list is not exhaustive.

Thus when these conjugates bind to antigen in the presence of complement the amide or ester bond which attaches the therapeutic agent to the linker will be cleaved, resulting in release of the agent in its active form. These conjugates, when administered to an individual, will accomplish delivery and release of the therapeutic agent at the target site, and are particularly effective for the *in vivo* delivery of pharmaceutical agents, antibiotics, antimetabolites, antiproliferative agents and the like.

TABLE II

5

SYNTHETIC SUBSTRATES FOR COMPLEMENT COMPONENTS

	<u>Reference No.*</u>
<u>For C$\bar{1}$:</u>	
N-Boc-tyrosine o-nitrophenyl ester	1
N-Boc-phenylalanine o-nitrophenyl ester	1
N-Boc-lysine o-nitrophenyl ester	1
15 N-CBZ-tyrosine p-nitrophenyl ester	2
<u>For C$\bar{4,2}$:</u>	
20 N-acetyl-gly-lys-methyl ester	3
N-CBZ-lys-methyl ester	3
N-acetyl-lys-methyl ester	3
Boc-leu-gly-arg-7-amino-4-methylcoumarin	4

25

-
- * 1. Sim et al., 1977, Biochem. J. 163:219-27.
 2. Bing 1969, Biochemistry 8: 4503-10.
 3. Cooper N.R., 1975, Biochemistry 14:4245-51.
 30 4. Caparale et al., 1981, J. Immunol. 128:1963-65.
-

35

40

45

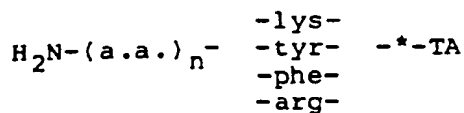
50

55

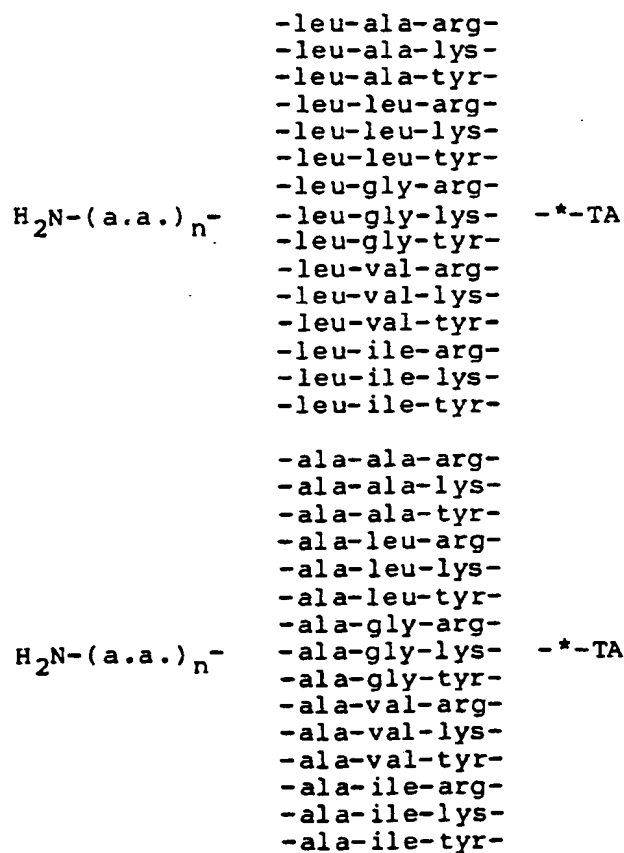
TABLE III

LINKER GROUPS FOR ATTACHMENT OF
 THERAPEUTIC AGENTS (TA) TO ANTIBODY MOLECULES¹

A. Linkers For Cleavage by Cl⁻



B. Tripeptide Sequences For Cleavage by C_{4,2}



¹ The asterisk (*) represents either an amide bond
 (Linker-C(=O)-NH-CI) or an ester bond (Linker-C(=O)-O-CI).

III. B. Tripeptide Sequences For Cleavage by C4,2
(Continued)

5		-gly-ala-arg-	
		-gly-ala-lys-	
		-gly-ala-tyr-	
		-gly-leu-arg-	
10		-gly-leu-lys-	
		-gly-gly-arg-	
	H ₂ N-(a.a.) _n -	-gly-gly-lys-	-*-TA
		-gly-gly-tyr-	
		-gly-val-arg-	
15		-gly-val-lys-	
		-gly-val-tyr-	
		-gly-ile-arg-	
		-gly-ile-lys-	
		-gly-ile-tyr-	
20		-val-ala-arg-	
		-val-ala-lys-	
		-val-ala-tyr-	
		-val-leu-arg-	
25		-val-leu-lys-	
		-val-leu-tyr-	
		-val-gly-arg-	
	H ₂ N-(a.a.) _n -	-val-gly-lys-	-*-TA
		-val-gly-tyr-	
		-val-val-arg-	
30		-val-val-lys-	
		-val-val-tyr-	
		-val-ile-arg-	
		-val-ile-lys-	
		-val-ile-tyr-	
35			
		-ile-ala-arg-	
		-ile-ala-lys-	
		-ile-ala-tyr-	
40		-ile-leu-arg-	
		-ile-leu-lys-	
		-ile-leu-tyr-	
		-ile-gly-arg-	
	H ₂ N(a.a.) _n -	-ile-gly-lys-	-*-TA
45		-ile-gly-tyr-	
		-ile-val-arg-	
		-ile-val-lys-	
		-ile-val-tyr-	
		-ile-ile-arg-	
50		-ile-ile-lys-	
		-ile-ile-tyr-	
55			

III C. Peptide Sequences for Cleavage by C4₂

5		-l u-gly-	
		-leu-leu-	
		-leu-ala-	
		-leu-val-	
		-leu-ile-	
		-gly-gly-	
10		-gly-leu-	
		-gly-ala-	
		-gly-val-	
	H ₂ N-	-ala-gly-	-Tripeptide ² -*-TA
		-ala-leu-	
15		-ala-ala-	
		-ala-val-	
		-ala-ile-	
		-val-gly-	
		-val-leu-	
20		-val-ala-	
		-val-val-	
		-val-ile-	
		-ile-gly-	
		-ile-leu-	
25		-ile-ala-	
		-ile-val-	
		-ile-ile-	

30

35

40

45

50

² Tripeptide represents any of the tripeptides listed in Table III B.

55 5.4.5. LINKERS FOR RELEASE WITHOUT COMPLEMENT ACTIVATION

In yet another application of targeted delivery, release of the therapeutic agent without complement activation is desired since activation of the complement cascade will ultimately lyse the target cell. Hence,

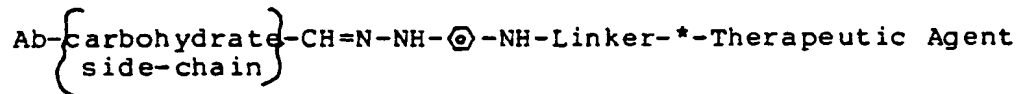
this approach is useful when delivery and release of the therapeutic agent should be accomplished without killing the target cell. Such is the goal when delivery of cell mediators such as hormones, enzymes, corticosteroids, neurotransmitters, genes or enzymes to target cells is desired. These conjugates may be prepared by attaching the therapeutic agent to an antibody molecule or fragment that is not capable of activating complement via a linker that is mildly susceptible to cleavage by serum proteases. When this conjugate is administered to an individual, antigen-antibody complexes will form quickly whereas cleavage of the therapeutic agent will occur slowly, thus resulting in release of the compound at the target site.

In accordance with one embodiment of the invention, the substrate linkers are modified, for example, by attaching hydrazine or hydrazide derivative to one end of the linker. The unmodified sites on the linker may or may not be covalently attached to a therapeutic agent. For instance, the substrate linkers which are attached to a therapeutic agent via an ester or amide link, as described in Section 5.3 (see Table II and Table III) are modified by attaching a hydrazide (e.g., phenylhydrazine) to the opposite amino terminus of the peptide chain. This results in the following structure (N.B., the symbol * signifies an amide or ester bond):



Although in the structure shown the hydrazine is in the para position, one may alternatively use compounds with the hydrazine moiety in the ortho or meta positions. These hydrazide derivatives of the peptide linkers which are attached to a therapeutic agent via an ester or amide bond are then reacted with an oxidized immunoglobulin, or immunoglobulin fragment containing an oxidized carbohydrate. This results in hydrazone formation and the covalent attachment of the therapeutic agent to the carbohydrate side chain of the immunoglobulin via a linker group which is susceptible to cleavage by complement. If desired, the linker utilized may be resistant to cleavage by either activated complement or serum proteases.

In embodiments in which the linker is designed to be susceptible to cleavage by a serum protease, one resulting structure is schematically represented below (N.B., the symbol * signifies an amide or ester bond):



5.4.6. NON-CLEAVABLE LINKERS OR DIRECT ATTACHMENT

In still other embodiments of the invention, the conjugate may be designed so that the therapeutic agent is delivered to the target but not released. This may be accomplished by attaching a therapeutic agent to an antibody or antibody fragment either directly or via a non-cleavable linker.

5.4.6.1. NON-CLEAVABLE LINKERS

These non-cleavable linkers may include amino acids, peptides, D-amino acids or other organic compounds which may be modified to include functional groups that can subsequently be utilized in attachment to antibody molecules or antibody fragments by the methods described herein. A general formula for such an organic linker could be



wherein

- W is either -NH-CH₂- or -CH₂-;
Q is an amino acid, peptide; and
n is an integer from 0 to 20.

5.4.6.2. NON-CLEAVABLE CONJUGATES

Alternatively, a compound may be attached to antibody molecules or antibody fragments which do not activate complement. When using carrier antibodies that are incapable of complement activation, this attachment may be accomplished using linkers that are susceptible to cleavage by activated complement or using linkers that are not susceptible to cleavage by activated complement.

5.5. USES OF ANTIBODY-THERAPEUTIC AGENT CONJUGATES

The antibody-therapeutic agent conjugates of the invention are useful in a variety of therapeutic in vivo applications.

Throughout this application the term "cellular disorder" is meant to include all neoplasms, including cancers, adenomas, and hyperplasias; certain immunological disorders, including autoimmune diseases, graft-versus-host diseases (e.g., after bone marrow transplantation), immune suppressive diseases, e.g., after kidney or bone marrow transplantation. Treatment of such cellular disorders involving, for example, bone marrow transplantation, may include purging (by killing) undesired cells, e.g., malignant cells or mature T lymphocytes.

Therapeutic applications center generally on treatment of various cellular disorders, including those broadly described above, by administering an effective amount of the antibody-therapeutic agent conjugates of the invention. The properties of the antibody are such that it is immunospecific for and immunoreactive with a particular antigen render it ideally suited for delivery of therapeutic agents to specific cells, tissues, organs or any other site having that particular antigen.

According to this aspect of the invention, the antibody or antibody fragment of the antibody therapeutic agent conjugate functions to deliver the conjugate to the target site.

The choice of antibodies, linkers, and compounds used to make the conjugates depends upon the purpose of delivery. The delivery and release or activation of therapeutic agents at specific target sites may result in selective killing or inhibition of proliferation of tumor cells, cancer cells, fungi, bacteria, parasites, or virus. The targeted delivery of hormones, enzymes, or neurotransmitters to selected sites may also be accomplished. Ultimately the method of the present invention may have an application in gene therapy programs wherein DNA or specific genes may be delivered in vivo or in vitro to target cells that are deficient in that particular gene. Additionally, the conjugates may be used to "turn off" or prevent the activation of oncogenes, such as *myc*, *ras* and the like.

In vivo administration may involve use of therapeutic agents of antibody therapeutic agent conjugates in any suitable adjuvant including serum or physiological saline, with or without another protein, such as human serum albumin. Dosage of the conjugates may readily be determined by one of ordinary skill, and may differ depending upon the nature of the cellular disorder and the therapeutic agent used. Route of administration may be parenteral, with intravenous administration generally preferred.

5.5.1. PHOTORADIATION THERAPY

One type of photoradiation therapy (also referred to in this context as photoimmunotherapy) which advantageously uses the antibody-therapeutic agent conjugates of this invention encompasses the treatment of disorders by combining the phototoxic effects of certain compounds and the site specific attachment of the antibody to a target site. The photosensitizer is activated by a light source and its cytotoxic effect is mediated through the production of singlet oxygen which results in toxicity to neighboring cells. This effect involves the participation of molecular oxygen. (For a more complete overview of this topic see Parrish, 1981, J. Invest. Derm. 77:45-50).

The specificity of the photochemical reaction can be maintained by selecting the proper wavelength and specific photosensitizer (or chromophore) to be used depending on the biologic effect desired. It may be possible to attach more than one photosensitizer for delivery to a target site. Depending upon the wavelength and effect desired therapeutic agents might be activated in a synergistic fashion. The photosensitizer may be activated at the target site with lasers or other light sources via optical fibers or any other appropriate method.

5.5.2. SUBSTRATE MODIFICATION

In an alternate embodiment of the present invention, substrate activation by the therapeutic agent may be used to mediate formation of singlet oxygen or peroxides and induce cell killing. In this particular

embodiment, the therapeutic agent is an enzyme. For example, galactose oxidase will oxidize galactose and some galactose derivatives at the C₆ position. In the course of the oxidation reaction, molecular oxygen is converted into hydrogen peroxide which is toxic to neighboring cells. The enzyme glucose oxidase, a flavoenzyme, may also be used in the embodiment of this invention. This enzyme is highly specific for β-D-glucose and can act as an antibiotic due to peroxide formation. The enzyme may be attached to an antibody molecule either directly or via a non-cleavable linker. An individual is given an effective dosage of this conjugate and is then perfused with substrate. Cell killing is mediated through the formation of peroxides by the methods described above. The toxic effect of peroxides may be amplified by administration of a second enzyme, preferably of human origin to convert the peroxide to a more toxic hypochlorous acid. Examples of suitable enzymes include but are not limited to myeloperoxidase, lactoperoxidase and chloroperoxidase.

5.6. ADVANTAGES OF ANTIBODY-THERAPEUTIC AGENT CONJUGATES

According to one embodiment of the present invention, a therapeutic agent may be attached to an antibody directed against a target antigen. The chemical linking methods described herein allow the resulting antibody conjugate to retain the ability to bind antigen and to activate the complement cascade (when the unconjugated antibody or antibody fragment had such ability). As a result, when the conjugate is administered to an individual, the subsequent formation of immune complexes with target antigens *in vivo* activates the individual's serum complement. If the linker is designed to be susceptible to cleavage by complement, the compound will be cleaved at the target site by one or more of the enzymes of the complement cascade. Since release of the compound occurs after delivery to the target site the efficiency of the target delivery system is greatly improved.

The method of the present invention offers another advantage over other targeting systems. For example, it is known that all cells of a tumor do not each possess the target antigenic determinant. Thus, delivery systems which require internalization into the target cell will effect successful delivery only to those tumor cells that possess the antigenic determinant and that are capable of internalizing the conjugate. Tumor cells that do possess the antigenic determinant or are incapable of this internalization, will escape treatment.

According to the method of the present invention, antibody carrier molecules deliver the therapeutic agent to the target cells. More importantly, however, once attached to the target cell, the method described in the present invention allows the release or activation of the active or activatable therapeutic compound. Release or activation may be mediated by the individual's activated complement enzymes, tissue plasminogen activator, urokinase, plasmin or another enzyme having proteolytic activity, or by activation of a photosensitizer or substrate modification. Once released, the therapeutic agent is then free to permeate the target sites, e.g., tumor mass. As a result, the therapeutic agent will act on tumor cells that do not possess the antigenic determinant. Additionally, the entire process is not dependent upon internalization of the conjugate.

The following examples will serve to further typify the nature of the invention without being a limitation on the scope thereof.

6. EXAMPLES: SERIES I

The purpose of this series of examples is to demonstrate that the methods for preparing antibody conjugates described in the present invention do not adversely affect the antigen binding properties of antibodies in the way the carbodiimide reaction affects such properties. To this end, the carbohydrate moieties of a mouse monoclonal IgM, specific for the phosphorylcholine group, were oxidized and covalently attached to the 1,6-diaminohexyl derivative of ethylene diamine di- (o-hydroxyphenylacetic acid) [EDDHA] to form 1,6-diaminohexyl-EDDHA. For comparative purposes, 1,6-diaminohexyl-EDDHA as well as unmodified EDDHA were attached to identical samples of IgM monoclonal antibody using the carbodiimide reaction. Under these conditions, the 1,6-diaminohexyl-EDDHA would couple to available aspartic and glutamic acid residues, while the unmodified EDDHA would couple to available lysines.

The binding properties of these samples were compared with the native antibody in order to evaluate affinity and homogeneity.

6.1. OXIDATION OF MOUSE MONOCLONAL IgM

A mouse monoclonal IgM antibody specific for the ligand, phosphorylcholine, was oxidized at a

concentration of 2 mg/ml in phosphate buffered saline (PBS, 0.01 M phosphate, 0.15 M sodium chloride), pH 6.0. The antibody-containing solution was cooled in a water-ice bath, and 56.8 μ g of sodium m taperiodate was added (40 μ l of a 1.42 mg/ml solution; final periodate concentration = 0.26 mM). This reaction mixture was incubated for one hour, after which 2 μ l of ethylene glycol was added. This was incubated an additional thirty minutes. The sample was then passed through a Sephadex® G-25 column equilibrated with PBS and the protein fractions pooled.

6.2. ATTACHMENT OF LINKER TO EDDHA

EDDHA (1.5 g, 4.2 mmole) and triethylamine (1.2 ml, 8.4 mmole) were mixed with 40 ml of water. This heterogeneous solution was heated to 60 °C and stirred vigorously for 0.5 hours. The solution was dried in vacuo and then was dissolved in 400 ml of dry N,N-dimethylformamide. The solution was then cooled in an ice bath and isobutylchloroformate (0.56 ml, 4.2 mmole) was added. The reaction mixture was stirred with cooling for 0.5 hours. The resulting triethylamine hydrochloride precipitate was removed by filtration and the filtrate containing the mixed carboxycarbonic anhydride of EDDHA was red in color.

1-amino-6-trifluoroacetamido-hexane (0.8 g, 4.1 mmole) was added to the above carboxycarbonic anhydride of EDDHA. The homogeneous solution was stirred at 4 °C for 0.5 hours, then was lyophilized to yield an oily product. The oil was washed with an acetone/ether (4:1) mixture to yield a crude yellow product. The solid 1-amino-6-trifluoroacetamido-hexyl-EDDHA was collected and hydrolyzed with 7% K₂CO₃ and reprecipitated with HCl at pH 4 to yield pure 1,6-diaminohexyl-EDDHA (1.4 g). This compound gives a positive ninhydrin test and thin layer chromatography shows only one spot. In the presence of basic solution of an equal molar quantity of TbCl₃, excitation at 295 nm yielded emission at 545 nm, due to formation of the characteristic energy transfer chelate complex between EDDHA and terbium ion.

6.3. PREPARATION OF IgM-LINKER-EDDHA CONJUGATES

The antibody, oxidized by the method of Section 6.1, was incubated with an approximately 270-fold molar excess of 1,6-diaminohexyl-EDDHA, prepared by the method of Section 6.2, for one hour at room temperature. This was followed by addition of solid sodium cyanoborohydride to a final concentration of 10 mM, and further incubation of 4 hours at room temperature. The mixture was then dialyzed at 4 °C versus several changes of PBS, and concentrated by ultrafiltration.

6.4. CARBODIIMIDE ATTACHMENT OF LINKER-EDDHA TO IgM

To 263 μ l IgM antibody (1.9 mg/ml) was added 10 mg of 1-ethyl-3-(3-dimethylaminopropyl) carbodiimide (1 ml of 10 mg/ml solution, pH 5.0) and PBS (pH 5.0) to make up to 2.5 ml. The mixture was incubated two hours at room temperature. Then 275 μ l of 0.1M 1,6-diaminohexyl-EDDHA in 2.5 ml of water (pH 5.5) was added, and the solution incubated for two hours at room temperature. Ten μ l of 1M ethanolamine was then added and incubated for one hour at room temperature. This was then dialyzed overnight against PBS (pH 7.0).

6.5. CARBODIIMIDE ATTACHMENT OF EDDHA TO IgM

To 263 μ l IgM antibody (1.9 mg/ml) was added 10 mg of 1-ethyl-3-(3-dimethylaminopropyl) carbodiimide (1 ml of 10 mg/ml solution, pH 5.0) and PBS (pH 5.0) to make up to 2.5 ml. The mixture was incubated for two hours at room temperature. To this was added 2.75 ml of 0.01M EDDHA (pH 5.5) and the solution was incubated for two hours at room temperature. Ten μ l 1M of ethanolamine was added and the mixture incubated for one hour at room temperature.

6.6. EFFECTS OF CARBOHYDRATE-MEDIATED ATTACHMENT TO ANTIBODIES

The affinities of unmodified mouse monoclonal antibody and antibody conjugates prepared according to Sections 6.3, 6.4 and 6.5, all specific for the phosphorycholine group, were measured by fluorescence quenching according to the methods described by Rodwell and Karush, 1983, J. Immunol. 130:313-316, incorporated herein by reference.

The Sips plots presenting data for antibody carbodiimide conjugates and antibody conjugates of the invention are shown in FIG. 2. The binding measurements clearly demonstrate the retention of specificity, affinity, and homogeneity for the sample modified via the carbohydrate attachment methods of the

invention,

(Δ — Δ),

5

when compared to the unmodified antibody

(\bullet — \bullet).

10

The association constant for the binding of the phosphorylcholine derivative was measured to be 8.1×10^5 M^{-1} for the unmodified antibody and 1.1×10^6 M^{-1} for the carbohydrate-attached antibody conjugate.

In contrast to this, the antibody preparation of Section 6.4, modified by a carbodiimide reaction

15

(\square — \square)

has substantially reduced binding, probably below the calculated value of $2.4 \times 10^5 M^{-1}$. The antibody preparation of Section 6.5, also modified by a carbodiimide reaction, showed even further reduced binding. The association constant for this antibody preparation was at least an order of magnitude below that measured for the unmodified antibody (too low to be accurately determined by this technique).

The assumption of a heterogeneity index of unity in the Sips analysis is valid for the data reduction only if the sample is homogeneous (monoclonal). A check on the actual homogeneity (monoclonal nature) of the sample is the correlation coefficient or fit of the experimental data points with the calculated line in the Sips plot. Inspection of the plots of FIG. 2 clearly shows good agreement for the unmodified antibody and carbohydrate-attached antibody and very poor agreement for those with carbodiimide-attachments. This is most likely due to the lack of selectivity of the carbodiimide attachment method. Lysines, glutamic and aspartic acids occur in all parts of antibody molecules, including the antigen binding regions. As a result, at least some of the antibodies are modified at or near the binding sites with consequent effects on interaction with antigen. The sites of attachment to carbohydrate, however, are specific and distal from the binding site, and provide little, if any, change in binding properties as shown in these experiments.

7. EXAMPLES: SERIES II

35 The following examples illustrate methods for the specific attachment of an antibody molecule to a compound of interest via a linker.

While the compound attached in these experiments is not considered a therapeutic agent, its use illustrates specific covalent attachment to the oxidized carbohydrate moiety of an antibody via a linker. By analogous mechanisms, a therapeutic agent may be attached to prepare an antibody-therapeutic agent conjugate.

40

7.1. OXIDATION OF THE CARBOHYDRATE MOIETY OF THE ANTIBODY MOLECULE

The antibody molecule used in this example was a monoclonal IgM (designated no. 171) specific for antigenic determinants on sheep red blood cells. To prepare the monoclonal antibody, Lewis rats were immunized with a single injection of sheep red blood cells. Three days later, spleen cells from the immunized rats were harvested and fused with the myeloma line SP2/O Ag14 according to the method of McKearn et al., 1979, Immunol. Rev. 47:91-115. Cloned cells were then grown and the resulting monoclonal antibody was purified as described by Kliman and McKearn, 1981, J. Immunol. Meth. 42:1-9.

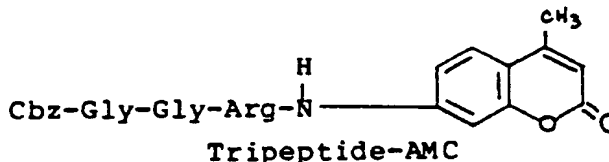
50 Oxidation of the antibody carbohydrate moiety was accomplished by reacting the antibody with galactose oxidase by a modification of the method of Cooper et al., supra. To this end, 3.8 mg of no. 171 monoclonal antibody was added to 1 ml of buffer consisting of 0.135 M NaCl, 0.015 Tris-HCl (pH 7.0), 0.5 mM MgCl₂, and 0.15 mM CaCl₂. Subsequently, a 0.1 ml aliquot of a solution of galactose oxidase (Worthington Biochemical Co., Freehold, NJ) at a concentration of 52 units of enzyme/ml of the same buffer was added to the antibody solution. Finally, 43 μ g of catalase (Worthington Biochemical Co., Freehold, NJ) dissolved in an additional 0.1 ml of the same buffer was added to the reaction mixture (the catalase was added to degrade hydrogen peroxid that is generated during the oxidation reaction). The reaction mixture was incubated for 48 hours at room temperature, then stored at 4°C. FIG. 3 represents the excitation

55

spectra for unoxidized (a) and oxidized (b) antibodies.

7.2. PREPARATION OF THE TRIPEPTIDE-AMC FOR ATTACHMENT TO THE ANTIBODY MOLECULE

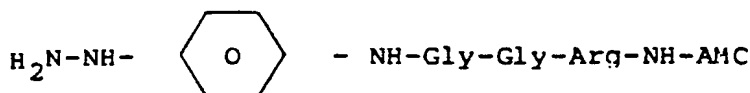
5 For the purposes of the present example, a synthetic fluorogenic compound was utilized as the conjugate partner. The properties of this synthetic compound are such that the bound and free states of the fluorogenic compound are spectrofluorometrically distinguishable. The synthetic fluorogenic compound used was obtained from Serva Fine Biochemicals, Inc., Garden City Park, LI, NY (Catalog #51474). This compound consists of a tripeptide (Gly-Gly-Arg) attached via an amide linkage to the fluorescent compound
 10 7-amino-4-methyl coumarin (AMC); the amino group of glycine is blocked by carbobenzoxy chloride (Cbz). The structure of this compound (hereinafter Tripeptide-AMC or Gly-Gly-Arg-AMC) is shown below:



20 The excitation and emission maxima of free AMC (345 nm and 445 nm, respectively) differ from those for AMC bound to the tripeptide (325 nm and 395 nm, respectively). This affords a means for distinguishing between the bound and free forms of the AMC molecule using a fluorometric assay. Excitation and emission wavelengths of 383 nm and 455 nm may be used for optimum differences for assay purposes; at these
 25 wavelengths, free AMC retains 20% of its maximal fluorescence but possesses a relative fluorescence 500-fold greater than an equimolar amount of bound AMC (Zimmerman *et al.*, 1978, Proc. Natl. Acad. Sci., U.S.A. 75(2):750-753).

A hydrazine derivative of the Tripeptide-AMC compound was prepared. Aldehyde groups of the oxidized carbohydrate side chain of the antibody molecule were then reacted with the hydrazine derivative
 30 to form a hydrazone.

In order to attach a hydrazine derivative (e.g., 4-fluorophenylhydrazine), the Tripeptide-AMC was first deblocked at the glycine amino terminus by removal of the Cbz group. This was accomplished by dissolving the Tripeptide-AMC in trifluoroacetic acid (Sigma, St. Louis, MO), and bubbling HBr gas (Matheson, East Rutherford, NJ) through the solution for 45 minutes. The product, H₂N-Gly-Gly-Arg-NH-
 35 AMC, was precipitated by the addition of cold diethyl ether (Baker Chemical Co., Phillipsburgh, NJ), and dissolved in absolute ethanol (Publicker Industries Co., Linfield, PA). An equimolar amount of 4-fluorophenylhydrazine (Aldrich Chemical Co., Milwaukee, WI) in absolute ethanol was added with mixing. After incubation in the dark at room temperature for 2 hours, the reaction mixture was stored in the dark at 4° C. The resulting product (Phenylhydrazine-Tripeptide-AMC) has the structure:



45 This compound was shown to be positive for fluorescence by exciting with ultraviolet light, and positive for the presence of a hydrazine group. The hydrazine linked to the tripeptide was detected by thin layer chromatography (TLC) using a spray of a 0.1% trinitrobenzene sulfonic acid aqueous solution for the colorimetric determination of a hydrazine (a pinkish or orange-brown color indicates the presence of
 50 hydrazine). The results of TLC demonstrated the presence of a hydrazine group at the migratory band of the Tripeptide-AMC.

The absorption and emission spectra for the Phenylhydrazine-Tripeptide-AMC compound as shown in FIG. 4 reveal a similarity to the Tripeptide-AMC spectra, but a shift in excitation and emission maxima consistent with the covalent modification of the Phenylhydrazine-Tripeptide-AMC. The maxima for excitation and emission of the Phenylhydrazine-Tripeptide-AMC compound are 345 nm and 385 nm, respectively. The
 55 product was precipitated from solution with cold diethyl ether, washed, and dissolved in dimethylsulfoxide (Baker Chemical Co., Phillipsburgh, NJ).

7.3. ATTACHMENT OF PHENYLHYDRAZINE-TRIPLEPTIDE-AMC TO THE OXIDIZED CARBO-HYDRATE MOIETY OF THE ANTIBODY MOLECULE

The oxidized monoclonal antibody preparation described in Section 7.1, *supra*, was adjusted to pH 5.1 by the addition of a small amount of 0.1 M acetate buffer (pH 5.0). An estimated 10-fold excess of Phenylhydrazine-Triptide-AMC (prepared in Section 7.2) was added to the antibody solution, which was then incubated at 37°C in the dark, overnight (approximately 14 hours). The reaction mixture was then chromatographed on a Sephadex® G-25 column (Pharmacia Fine Chemicals, Piscataway, NJ) in order to remove any unreacted Phenylhydrazine-Triptide-AMC.

Spectrofluorometric analysis of the protein fractions confirmed the presence of the Phenylhydrazine-Triptide-AMC covalently attached to the antibody (Antibody-Phenylhydrazine-Triptide-AMC). The excitation and emission maxima for the conjugate are 325 nm and 385 nm, respectively (FIG. 5). The large peak at 285 nm in the excitation spectrum of the conjugate may be explained by tryptophan absorption with residual fluorescence at 385 nm and may also be the result of resonance energy transfer from the amino acid tryptophan of the antibody molecule to AMC.

8. EXAMPLES: SERIES III

The following examples illustrate specific release of the compound from the antibody conjugate prepared by the methods of Section 7. These antibody conjugates retain the ability to fix complement as revealed by a hemolytic complement fixation assay. Furthermore, the specific release of the compound from the antibody conjugate, at the antigenic cell surface, via enzymatic cleavage by the complement system is demonstrated by a non-hemolytic assay.

In the following examples the compound is fluorogenic. Thus, the complement mediated release of the fluorescent compound may be detected by an assay capable of differentiating between the bound and free forms of the fluorescent molecule.

While the compound released in this example is not considered a therapeutic agent, its use illustrates enzymatic cleavage of a linker by the complement system or a serum enzyme having proteolytic activity. By analogous cleavage mechanisms, a therapeutic agent may be released from an antibody-therapeutic agent conjugate.

The materials and procedures of Section 7.1 were used as described to oxidize the carbohydrate moieties of monoclonal antibodies (No. 171).

In the presence of sheep red blood cells and serum complement, these monoclonal antibodies (No. 171) activate the complement enzyme cascade (a result of antigen-antibody binding). Complement fixation causes lysis of the sheep red blood cells which results in the release of hemoglobin. The released hemoglobin may be detected spectrophotometrically, thus providing an assay for complement fixation.

The Triptide-AMC was prepared as described in Section 7.2. The properties of the fluorogenic compound (AMC) are such that the bound and free states of the fluorogenic compound are spectrofluorometrically distinguishable. This provides a definitive assay for measuring the complement fixation ability of the antibody conjugate. More importantly, it provides a means for quantitating the subsequent complement-mediated release of the compound.

The specific covalent attachment of phenylhydrazine-tripeptide-AMC to the oxidized carbohydrate moieties of the antibodies was performed as described in Section 7.3.

8.1. COMPLEMENT FIXATION ASSAYS

Two types of complement fixation assays were utilized, hemolytic and fluorometric. These assays determined whether the Antibody-Phenylhydrazine-Triptide-AMC conjugate retained complement fixation ability, and whether AMC was cleaved by complement.

8.1.1. PREPARATION OF HUMAN COMPLEMENT

A 10 ml sample of freshly drawn human whole blood was clotted on ice for 17 hours. The clot was removed by centrifugation, and the resulting human serum was frozen in 0.5 ml aliquots. Human complement was shown to be active in these samples by the hemolytic assay described in Section 8.1.2.

8.1.2. HEMOLYTIC ASSAY FOR COMPLEMENT FIXATION

A 200 μ l aliquot of a suspension of sheep red blood cells (Gibco Diagnostics, Madison, WI) at an approximate concentration of 2×10^8 cells/ml were mixed with 20 μ l of the Antibody-Phenylhydrazine-Tripeptide-AMC conjugate mixture prepared in Section 7.3 (approximately 2 μ g of protein). After 15 minutes of mixing and incubating at 37 $^{\circ}$ C, 100 μ l of the human serum complement (prepared in Section 8.1.1.) was added to the mixture. After 30 minutes to 1 hour of incubation at 37 $^{\circ}$ C, the mixture was centrifuged to pellet the cells. The extent of the complement-mediated cell lysis was determined by spectrophotometrically measuring hemoglobin released into the supernatant (412 nm).

The results of this assay demonstrated complete hemolysis and essentially 100% binding of antibody to cell surface. For example, addition of distilled water to a pellet formed by centrifuging 200 μ l of the sheep red blood cell suspension completely lyses the cells, and releases hemoglobin. A 1:20 dilution of the supernatant of sheep red blood cells which were completely lysed in distilled water had an O.D.₄₁₂ of 0.646. An identical dilution of sheep red blood cells which were lysed by the addition of conjugate and complement had an O.D.₄₁₂ of 0.672. Thus the conjugate retained the ability to bind antigen and to fix complement.

8.1.3. NON-HEMOLYTIC ASSAY FOR COMPLEMENT MEDIATED RELEASE OF AMC

Conditions for the non-hemolytic assay were identical to those above except that glutaraldehyde-fixed sheep red blood cells (Sigma, St. Louis, MO) were used in place of normal sheep red blood cells. Glutaraldehyde fixed cells do not lyse in the presence of antibody and complement and, therefore, no hemoglobin is released. Instead, a fluorometric assay is used to demonstrate the release of the AMC. A non-hemolytic system is necessary for use in the fluorometric assay, because the presence of hemoglobin interferes with fluorescence measurements in this system. Prior to use in the assay, these fixed red blood cells were shown to bind both the unmodified antibody and the Antibody-Phenylhydrazine-Tripeptide-AMC which was prepared in Section 7.3.

The non-hemolytic assay was used to show the specific complement-mediated release of the AMC from the antibody conjugate. Similarly to the hemolytic assay, 200 μ l of the glutaraldehyde-fixed sheep red blood cells, at an approximate concentration of 2×10^8 cells/ml, was incubated with the Antibody-Phenylhydrazide-Tripeptide-AMC conjugate at 37 $^{\circ}$ C for 15 minutes.

After centrifuging and resuspension in buffer, 50 μ l of the human complement preparation (Section 8.1.1) was added, and the fluorescence at 460 nm monitored, with excitation at 380 nm (Caporale et al., 1981, J. Immunol. 128:1963-65.) as a function of time. As controls, the conjugate was incubated with sheep red blood cells alone; in the presence of rat red blood cells and human complement (the monoclonal antibody used does not bind to rat red blood cells); and in the absence of both sheep red blood cells and complement (the monoclonal antibody used does not bind to rat red blood cells). FIG. 6 shows the results of these experiments. A comparison of curve (a) which represents the conjugate incubated with glutaraldehyde-fixed sheep red blood cells and human complement to the control curves labeled (b), (c) and (d) clearly demonstrates the release of free AMC in the sample containing the specific antibody target and human complement. Thus, curve (b) which represents the conjugate incubated with glutaraldehyde-fixed rat red blood cells and human complement, curve (c) which represents the conjugate incubated with glutaraldehyde-fixed sheep red blood cells, and curve (d) which represents the conjugate alone demonstrate no release of AMC.

9. EXAMPLES: SERIES IV

According to one embodiment of the present invention a therapeutic agent may be attached to an antibody or antibody fragment via a linker that is susceptible to cleavage by complement or other proteolytic enzymes. Such antibody-conjugates are particularly useful for therapeutic applications where it is desired to release the therapeutic agent at the target site in the body. As detailed in Section 5, the antibody-therapeutic agent conjugates may be prepared either by attaching a therapeutic agent to an antibody-linker intermediate, or by attaching an antibody to a linker-therapeutic agent intermediate.

According to another method of the present invention, for attachment to reduce antibodies or antibody fragments, the linkers (e.g., Gly-Gly-Arg) must be modified to contain a reactive group capable of reaction with the sulfhydryl group of a reduced antibody or Fab' fragment. Such reactive groups include, but are not limited to: reactive haloalkyl groups (including, for example, haloacetyl groups), p-mercuribenzoate groups and groups capable of Michael-type addition reactions (including, for example, maleimides and groups of the type described by Mitra and Lawton, 1979, J. Amer. Chem. Soc. 101: 3097-3110). By the term "haloalkyl" is meant any alkyl group of one to three carbon atoms substituted with bromine, iodine or

chlorin .

In the following examples (Series IV and V) either (AMC) or the amino acid tyrosine, covalently attached to a linker, e.g., Gly-Gly-Arg, was released via enzymatic cleavage. While the compounds (AMC and tyrosine) released by the cleavage of the linker in these examples are not considered therapeutic agents, their use illustrates enzymatic cleavage by serum enzymes such as trypsin, urokinase and plasmin and tissue plasminogen activator. By analogous mechanisms, a therapeutic agent may be cleaved by such enzymes from the linker-therapeutic agent intermediates of the present invention.

In Series IV, the AMC or tyrosine was enzymatically cleaved from a free linker. In Series V, the AMC or tyrosine was enzymatically cleaved from a free antibody-linker conjugate and from an antibody-linker conjugate bound to a target cell. Thus, comparison of results from the two series of experiments illustrates the effect of the leaving group (AMC or tyrosine) on the rate of cleavage, as well as the effect of the environment (i.e., free linker versus free antibody-linker conjugate versus antibody-linker conjugate bound to a target cell).

9.1. CLEAVAGE OF THE TRIPEPTIDE-AMC BY TRYPSIN AND UROKINASE

For the purposes of this experiment, a synthetic fluorogenic compound Gly-Gly-Arg-AMC obtained from Serva Fine Biochemicals, Inc., Garden City Park, NY was utilized.

The rates of cleavage for the peptide linker were measured by fluorescence quenching using a Perkin Elmer 650-10S fluorescence spectrometer (Perkin-Elmer Corporation, Norwalk, CT). The excitation and emission wavelengths were 380 nm and 460 nm, respectively and the temperature was maintained at 25 °C with a Lauda k-2/R circulating water bath (Brinkmann Instruments, Westbury, NY).

The initial concentrations of Gly-Gly-Arg-AMC were determined by optical density.

25

$$\sum_{325}^{1M} = 16,000.$$

The solutions were adjusted to 1 μ M concentrations. One ml of the 1 μ M solution in PBS, pH 7.4 was placed in a cuvette. The appropriate amounts of enzyme (1 μ g/ml trypsin or 10 μ g/ml urokinase) was then added at room temperature with stirring using a motor-driven syringe and the reaction kinetics were followed for several minutes. The fluorescence intensity of a known concentration of free AMC was established and used as a baseline to determine the change in units per nM/minute of free AMC in this fluorescence assay system. The results of the assay are described in Table IV.

35

40

45

50

55

TABLE IV

Section ¹	Substrate	Released Group Substrate Concentration	Cleavage Rates nM/min.	
			Trypsin ² 1 µg/ml	Urokinase 10 µg/ml
9.1	Gly-Gly-Arg-AMC	1 µM	35	16
9.1	Gly-Gly-Arg-AMC	1 µM	75	60
9.1	Gly-Gly-Arg-AMC	1 µM	170	78
9.1	Dextran-Gly-Gly-Arg-AMC	1 µM	8.4	.9
9.1	Gly-Gly-Arg-AMC	100 µM	20,000	not determined
9.3	Gly-Gly-Arg-Tyr*	0.1 µM	4	.01
9.4	Pro-Gly-Arg-Val- Val-Gly-Tyr*	0.1 µM	3	.01

1 Section = section in which experiment is described.

2 100 µg/ml Trypsin was used in the experiment in which the Gly-Gly-Arg-AMC substrate concentration was 100 µM.

In another experiment, the Gly-Gly-Arg-AMC concentration was 100 µM and the trypsin used at 100 µg/ml. The results of this assay are also described in Table IV.

In another embodiment of the present invention, the Gly-Gly-Arg-AMC was conjugated to oxidized dextran which can serve as a spacer as described in Section 5.4.3 (10,000 molecular weight) (Pharmacia Fine Chemicals, Piscataway, NJ) by the methods of the present invention using a molar ratio of Gly-Gly-Arg-AMC to dextran of 58:1. Dextran-Gly-Gly-Arg-AMC was separated with a 6.5 ml Sephadex® G-25 column (Pharmacia Fine Chemicals, Piscataway, NJ).

Rates of enzymatic cleavage of the dextran-Gly-Gly-Arg-AMC, using the methods of this section, are also summarized in Table IV.

Peptide sequences that are analogs of complement components were cleaved by trypsin (0.1 µg/ml), urokinase (0.1 µg/ml), plasmin (1 µg/ml) and purified complement component (40 µg/ml). The data in Table V compare the cleavage rates (nM/minute) of these sequences. The fluorescence assay described in Section 8 for cleavage of Gly-Gly-Arg-AMC was used here. Complement components were purified and assayed by the method of Tack and Prahl (Biochem., 1976, 15:4513-4521).

TABLE V

Cleavage of Tripeptide-AMC Derivatives
by Urokinase, Trypsin, Plasmin and
Purified Components C_{4,2} and C_{1S}

PEPTIDE (5 μ M)	Urokinase (0.1 μ g/ml)	Trypsin (0.1 μ g/ml)	Plasmin (1 μ g/ml)	C _{1S} , C _{4,2} (40 μ g/ml)	C _{1S} (10 μ g/ml)
Z-Gly-Gly-Arg-AMC	27	450	0.005	0.9-1.2	0.9-1.2
Glu-Gly-Arg-AMC	35	140	--	--	--
Boc-Val-Gly-Arg-AMC	2.8	720	--	--	--
Boc-Leu-Gly-Arg-AMC	3.7	750	--	--	--
Boc-Val-Gly-Arg-AMC	2.8	720	--	--	--
Boc-Phe-Ser-Arg-AMC	0.044	17	--	--	--
Boc-Val-Pro-Arg-AMC	0	3.8	--	--	--
Boc-Glu-Arg-Arg-AMC	0	3.7	--	--	--
Glu-Lys-Lys-AMC	0	0.62	--	--	--
Pro-Phe-Arg-AMC	0	0	--	--	--

9.3. CLEAVAGE OF GLY-GLY-ARG-TYR* BY UROKINASE AND TRYPSIN

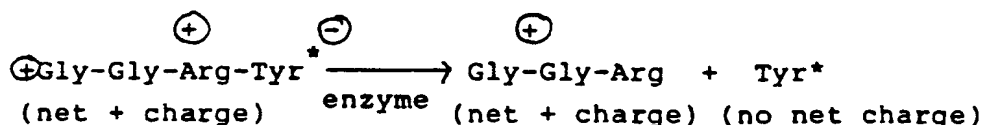
For the purposes of the present example, the tetrapeptide Glycine-Glycine Arginine-Tyrosine was radiolabeled at the amino acid residue tyrosine with ¹²⁵Iodine (¹²⁵I) (Greenwood et al. 1963, Biochem. J.

88: 114-120). This radiolabeled compound is hereinafter referred to as Gly-Gly-Arg-Tyr* (wherein the * denotes ¹²⁵I). The properties of this radiolabeled peptide are such that the bound and free states can be readily assayed for the release of the ¹²⁵I labeled tyrosine residue after cleavage with the appropriate amount of enzyme (1 μg/ml trypsin or 10 μg/ml urokinase).

5 The peptide Gly-Gly-Arg-Tyr* was assayed for the release of the ¹²⁵I labeled tyrosine residue by agarose gel electrophoresis or thin-layer chromatography (TLC, Sono and Asakura, 1974, Biochem. 13:4386-4394). Briefly, appropriate amounts of enzyme were added to a reaction tube containing 0.1 μM Gly-Gly-Arg-Tyr* in PBS, pH 7.4. The mixture was incubated at 37° C for 30 minutes. Three μl of this reaction mixture were then applied to an agarose gel (1%) and run at high voltage (120 V/cm) in Barbitol
10 Buffer, 0.025 M sodium diethylbarbiturate HCl buffer, pH 8.6. Three μl of bromophenol blue solution was used as a marker to determine the end of the run. The agarose gel was then cut into sections and counted in a LKB 1271 gamma counter (LKB Instruments, Gaithersburg, MD) to determine if the Tyr* remained at the origin or migrated through the gel. Alternatively, samples were separated and identified by TLC as described supra. Samples were spotted on TLC plates after incubation with the enzyme and run in 4:1:1
15 BAW solvent (butanol:acetic acid:water) until the solvent front was one inch from the top of the plate. The plate was dried and divided into ten sections which were counted in a gamma counter. The ¹²⁵I labeled tyrosine residue will migrate further than the unlabeled peptide in this system.

In both systems the peptide is cleaved as described below:

20



25

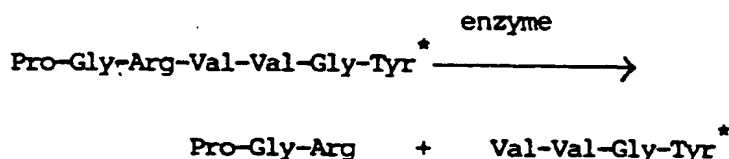
The rates of cleavage for trypsin and urokinase are summarized in Table IV.

9.4. CLEAVAGE OF A PLASMINOGEN ANALOG BY TRYPSIN AND UROKINASE

30

In the following experiments, an ¹²⁵I radiolabeled plasminogen analog Pro-Gly-Arg-Val-Val-Gly-Tyr* was synthesized by standard peptide solid phase synthetic methods (Barany and Merrifield, IN The Peptides, Vol. 2, E. Gross and J. Meinhofer, eds., Academic Press, NY, 1980, pp 1-180). It was cleaved by the enzymes trypsin (1 μg/ml) and urokinase (10 μg/ml), as described above and assayed by TLC in the BAW solvent system described supra. The peptide is cleaved as described below:

35



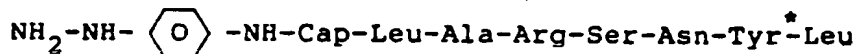
40

45 In these assays the radiolabeled Tyr* residue of the peptide migrated farther than the unlabeled portion. The rates of cleavage are summarized in Table IV.

9.5. CLEAVAGE OF A PURIFIED COMPLEMENT COMPONENT ANALOG

50

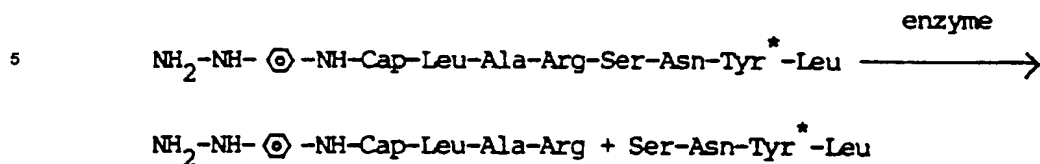
In another experiment, an ¹²⁵I radiolabeled C3 complement component analog



55

covalently attached to phenylhydrazine aminocaproic acid (NH-Cap) prepared by solid phase synthesis (Barany and Merrifield, supra) was cleaved by purified complement component C3s (10 μg/ml) and C1N, C4,2 (40 μg/ml). Complement components were purified by the method of Tack and Prah, 1976, Biochem.

15:4513-4521. The peptid is cleaved as follows:



In these assays the radiolabeled Tyr* residue of the peptide migrated farther than the unlabeled portion. The rates of cleavage are summarized in Table VI.

15 TABLE VI
ENZYMATIC CLEAVAGE

Substrate	Released Group Substrate Concentration	Cleavage Rates nM/min.	
		Cls 10 µg/ml	Cls, C4,2 40 µg/ml
25 $\text{NH}_2\text{-NH-}\oplus\text{-NH-Cap-Leu-Ala-Arg-Ser-Asn-Tyr}^*\text{-Leu}$	5 µM	.01	.01

30 10. EXAMPLES: SERIES V

35 Two specific monoclonal antibodies were utilized in the following experiments (NS 4.1 - Mouse IgM against sheep red blood cells and LL 1151-Mouse IgG against sheep red blood cells).

10.1. FORMATION OF ANTIBODY-GLY-GLY-ARG-TYR* CONJUGATES

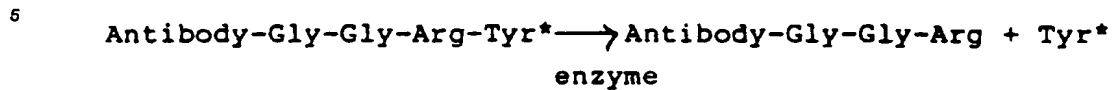
40 Radiolabeled antibody-Gly-Gly-Arg-Tyr* conjugates were prepared according to one method of the present invention as described below. The carbohydrate moiety of the antibody (LL 1151) was oxidized by reacting approximately 1 mg/ml of antibody in phosphate buffered saline (PBS) with 110 µl of 100 mM sodium metaperiodate (NaIO₄) at pH 6 (to give a final concentration of 10 mM (NaIO₄) for 1 hour on ice in the dark.

45 Gly-Gly-Arg-Tyr*, prepared by the method of Section 9.3, was coupled to normal human IgG or LL 1151 or NS 4.1 antibody oxidized by the method of Section 12.1 infra, by incubating the antibody at a 300-fold molar excess of Gly-Gly-Arg-Tyr* in the 0.1 M phosphate buffer, pH 6.0. To reduce the imine, sodium cyanoborohydride (NaCNBH₃) was added to a final concentration of 10 mM, and the reaction mixture was maintained at room temperature for 2 hours. Unreacted Gly-Gly-Arg-Tyr* was separated from the antibody conjugate by gel filtration. The sample was passed through a 5 ml Sephadex® G-50 column (Pharmacia Fine Chemicals, Piscataway, NJ), which had been pre-coated with 1 ml of 10% BSA and run in PBS, pH 7.4. The protein fraction were pooled.

50 10.2. CLEAVAGE OF ANTIBODY-GLY-GLY-ARG-TYR* CONJUGATES BY TRYPSIN AND UROKINASE

55 The antibody-Gly-Gly-Arg-Tyr* conjugates prepared by the method of Section 10.1 were assayed for the release of the ¹²⁵I tyrosine residue by gel filtration after cleavage of the linker. The conjugate was cleaved by the enzyme trypsin (100 µg/ml or 10 µg/ml) or urokinase (100 µg/ml) as described in section 9.2, and the

mixture was chromatographed on a Sephadex® G-50 column. In this system, the cleaved Tyr* was retarded by the column. The fore cleavage was determined by the loss of radioactivity in the void volume peak after gel filtration on the column. The antibody-peptide was cleaved as follows:



10 The results of this experiment are summarized in Table VII.

15 TABLE VII

ENZYMATIC CLEAVAGE OF ANTIBODY CONJUGATES

Section ¹	Substrate	% cleaved (based on loss of ¹²⁵ Tyr)			
		Trypsin		Urokinase	
		100 μg/ml	10 μg/ml	100 μg/ml	10 μg/ml
10.2	NS 4.1-Gly-Gly-Arg-Tyr*	33	27	3	
25 10.2	LL 1151-Gly-Gly-Arg-Tyr*	33	18	1	
10.3	GSRBC-NS 4.1-Gly-Gly-Arg-Tyr*		28		6
30 10.3	GSRBC-LL 1151-Gly-Gly-Arg-Tyr*		19		-

¹ Section = section in which experiment is described.

40 10.3. ATTACHMENT OF THE ANTIBODY-GLY-GLY-ARG-TYR* CONJUGATES TO CELLS AND ENZY-
MATIC CLEAVAGE

This experiment illustrates cleavage of Tyr* from antibody-Gly-Gly-Arg-Tyr* conjugates, wherein the antibody conjugate was attached to an antigenic determinant of a cell.

45 Twenty ml of glutaraldehyde-fixed sheep red blood cells (GSRBC, 1x10⁹ cells/ml) were washed in Buffer I (0.15 M NaCl, 0.05 M Tris, 0.1 mg/ml BSA, pH 8.0) and resuspended in 2 ml of Buffer I. The cells were incubated with LS 1151-Gly-Gly-Arg-Tyr* (or NS 4.1 Gly-Gly-Arg-Tyr*) prepared by the method of Section 10.1 for 30 minutes at 0° C, then for 30 minutes at 37° C, washed several times with Buffer I and finally resuspended in 10 ml Buffer I. Either of the enzymes trypsin (10 μg/ml) or urokinase (10 μg/ml) was added to 1 ml aliquots of cells and incubated for 0, 15, 60, and 180 minutes at 37° C. Controls were treated in a similar manner but without the addition of enzyme. After incubation at 37° C the cells were washed with buffer, resuspended in 1 N NaOH, and counted in a LKB 1271 gamma counter (LKB Instruments, Gaithersburg, MD). The percent of loss of counts per minute (CPM) compared to the control was calculated to be the amount of Tyr* cleaved.

The results are summarized in Table VII.

55 10.4. FORMATION AND CLEAVAGE OF CELL ANTIBODY GLY-GLY-ARG-AMC

This experiment illustrates the cleavage of AMC from an antibody-Gly-Gly-Arg-AMC conjugate attached

to a target cell.

Two ml of glutaraldehyde fixed sheep red blood cells (GSRBC, 1×10^9 cells/ml) were washed in EDTA (ethylenediaminetetraacetic acid) - VBS gel buffer. The pellet was incubated with an LL 1151 Gly-Gly-Arg-AMC conjugate, prepared using the same methods described in Section 12.1 infra and incubated for 30 minutes at 37° C, and then for 30 minutes at 0° C. This mixture was washed with EDTA-VBS gel buffer and resuspended in 2.2 ml PBS, pH 7.4. The mixture was separated into two portions. Trypsin (1 µg/ml) or urokinase (1 µg/ml) was then added to one portion of the resuspended material. The other portion was the control. The conjugate was then incubated at 37° C. At various times during the incubation period, the mixture was centrifuged and the fluorescence of the supernatant was measured using a Perkin Elmer 650-10S fluorescence spectrophotometer as described in Section 9.1. The fluorescence of the known concentration of bound AMC (control) was determined and the change in nM/minute after cleavage was calculated. The results are summarized in Table VIII.

TABLE VIII

CLEAVAGE OF AMC FROM ANTIBODY
CONJUGATE ATTACHED TO TARGET CELL

<u>Substrate</u>	<u>Trypsin</u>	<u>Cleavage Rate</u> <u>(nM/min.)</u> <u>1 µg/ml</u> <u>Enzyme</u> <u>Urokinase</u>
GSRBC-LL 1151- Gly-Gly-Arg-AMC	0.48	0.14

11. EXAMPLES: PREPARATION OF PORPHYRIN DERIVATIVES

The following examples illustrate the novel derivatives of porphyrin which can be used as photoactivatable cytolytic agents (or photosensitizers) for in vivo therapy when specifically attached to an antibody molecule.

11.1. PREPARATION OF DEUTEROPORPHYRIN DIHYDRAZIDE

Commercially available deuteroporphyrin dimethyl ester (98%, 0.05 g, 0.093 mmole), obtained from Aldrich Chemicals, Milwaukee, WI, was suspended in 10 ml dry methanol and 10 µl anhydrous hydrazine (9.0 mg, 0.28 mmole) was added. The solution was refluxed for approximately 4 hours and then evaporated to produce a deep red solid.

11.2. PREPARATION OF PROTOPORPHYRIN DIHYDRAZIDE

Commercially available protoporphyrin dimethyl ester (345 mg, 6.0 mmole) obtained from Aldrich Chemicals, Milwaukee, WI, was suspended in 30 ml dry methanol. Anhydrous hydrazine (48.0 mg, 1.5 mmole, 47.4 µl) was added and the solution refluxed for 24 hours. Evaporation gave a deep red solid which was only slightly soluble in many organic solvents.

11.3. PREPARATION OF HEMATOPORPHYRIN DIMETHYL ESTER

Commercially available hematoporphyrin (3.0 g, 5 mmole) was obtained from Aldrich Chemicals, Milwaukee, WI, suspended in 50 ml dry methanol in a 250 ml erlenmeyer flask equipped with a magnetic

stirrer and cooled to 0 °C in an ice bath. A solution of ethyl diazomethane (approximately 17 mmoles in about 125 ml ether) was added slowly over a period of 25 minutes with constant stirring. The mixture was stirred at 0 °C for one hour and then at room temperature overnight in the dark. Evaporation of the solution produced a deep red solid which was separated by the technique of thin-layer chromatography (Sono and Asakura, 1974, *Biochem. J.* 13:4356-4394) using a developing solvent composed of 5% methanol and 95% chloroform. Several components were identified, including a major component which gave a large pink spot with an R_f value of 0.14. The dimethyl ester could be converted to the corresponding dihydrazide by standard treatment with methanolic hydrazine.

11.4. PREPARATION OF HEMATOPORPHYRIN DIHYDRAZIDE

Hematoporphyrin free base (0.5 g, 8.35×10^{-4} mole, Sigma Chemical Co., St. Louis, MO) was dissolved in 200 ml of dry N,N-dimethylformamide and 0.24 ml of triethylamine was added and stirred under nitrogen gas for 20 minutes at room temperature. This homogeneous solution was cooled in an ice bath and 0.218 ml isobutylchloroformate (1.67×10^{-3} mole) was added. After stirring for one-half hour, 0.132 ml (4.16×10^{-3} mole) anhydrous hydrazine was added. The solution was stirred in the dark at 4 °C for one hour and for one hour at room temperature.

The solution was dried with a Rotary Evaporator (Rotavap, Buchi, Brinkmann Instruments, Westbury, NY) to give a deep red residue. Distilled water was added to the residue and the solution was adjusted to pH 12 with 1N NaOH to yield more of the precipitate. The solid product was removed by filtration, washed with distilled water and dried in a vacuum dryer to give a deep red crystals.

11.5. PREPARATION OF FICOLL-HYDRAZIDE-HEMATOPORPHYRIN

Ficoll 70 was obtained from Pharmacia Fine Chemicals, Inc., (Piscataway, NJ). The carboxymethyl derivative of Ficoll 70 (CM-Ficoll) was prepared by a modification of the method of Inman (1975, *J. Immunol.* 114: 704-709). Two grams of CM-Ficoll were dissolved in 100 ml of water and 10 g of adipic dihydrazide were added slowly. The pH was adjusted to 4.7 by the dropwise addition of 1N HCl then 1.25 g of 1-ethyl-3-(3-dimethyl-aminopropyl) carbodiimide were added and the pH was readjusted to 4.7 with 1N HCl. The reaction mixture was then stirred for 20 hours at 23-25 °C. The crude reaction product was purified by gel filtration chromatography on a 4.5 x 55 ml column of Sephadex® G-25. The column was eluted with phosphate buffered saline (PBS, 0.01 M sodium phosphate, 0.15 M sodium chloride, pH 7.4) and the void volume fractions were saved. The hydrazide-Ficoll was then dialyzed against water and lyophilized. The final product contained about 150 moles of hydrazide/mole of Ficoll.

The hydrazide Ficoll (0.25 g, 0.004 mmole Ficoll 0.23 meq. hydrazide) was dissolved in 10 ml water and adjusted to pH 5.0. Hematoporphyrin (0.069 g, 0.12 mmole) was added followed by 1-ethyl-3-(3-dimethyl-aminopropyl)(0.44 g, 2.3 mmole), and the reaction mixture was stirred overnight. The solution was then dialyzed against Na₂CO₃ solution, pH 9.0 for approximately 5 days. The solution was then lyophilized and the brownish powder stored at 0 °C.

12. EXAMPLE: ATTACHMENT OF HEMATOPORPHYRIN DIHYDRAZIDE TO ANTIBODY

The specific mouse monoclonal antibody utilized in the following experiments was CYT-021. This antibody is a monoclonal IgG which is specific for a glycoprotein antigen on human cytotoxic/suppressor T-lymphocytes.

12.1. PREPARATION OF ANTIBODY-HEMATOPORPHYRIN DIHYDRAZIDE CONJUGATES

The hematoporphyrin dihydrazide was attached to the CYT-021 antibody for use in photoradiation treatment of cellular disorders. Antibody-hematoporphyrin dihydrazide conjugates were prepared according to one method of the instant invention by first oxidizing the carbohydrate moiety of the antibody molecule. The carbohydrate moiety of CYT-021 antibody was oxidized by reacting approximately 1 mg/ml of antibody in phosphate buffered saline (PBS) with 110 µl of 100 mM sodium metaperiodate (NaIO₄) at pH 6 (to give a final concentration of 10 mM NaIO₄) for 1 hour on ice in the dark.

Excess NaIO₄ was removed by passing the solution through a 10 ml Sephadex® G-50 column (Pharmacia Fine Chemicals, Piscataway, NJ) which had been prewashed with 1 ml of a 10% bovine serum albumin (BSA) solution in phosphate buffered saline (PBS). The protein was eluted with PBS, pH 6 and 1 ml fractions were collected, OD₂₈₀ determined and the protein fractions were pooled. The oxidized CYT-021

antibody was then attached to hematoporphyrin dihydrazide as described below and the CYT-021 antibody-hematoporphyrin dihydrazide conjugate either used immediately or stored frozen at -20°C protected from light.

5 Hematoporphyrin dihydrazide was coupled to oxidized CYT-021 antibody as follows. A solution of hematoporphyrin dihydrazide was prepared by dissolving 5 mg of hematoporphyrin dihydrazide in 50 μl of N,N-dimethylformamide (DMF). The concentration of hematoporphyrin dihydrazide was adjusted to 1 mg/ml by the addition of 5 ml of deionized water.

10 500 μl of oxidized CYT-021 antibody, in PBS, pH 6.0 was incubated with an equal volume of the hematoporphyrin dihydrazide solution for 30 minutes in the dark, at room temperature. To reduce the hydrazone product, sodium cyanoborohydride (NaCNBH_3) was added to a final concentration of 10 mM and the reaction mixture was incubated overnight at room temperature.

15 Free hematoporphyrin dihydrazide, in PBS, pH 6.0, was removed by passing the reaction mixture over a 10 ml Sephadex® G-50 column (Pharmacia Fine Chemicals, Piscataway, NJ) which had been pre-washed with 1 ml of a 10% solution of BSA in PBS. The protein was eluted with PBS, pH 6 and 1 ml fractions were collected, and protein fractions were pooled. The amount of hematoporphyrin dihydrazide bound to CYT-021 antibody was determined spectrophotometrically by using the extinction coefficients for protein at 280 nm and hematoporphyrin dihydrazide at 374 nm, and ranged from 4 to 8 moles/mole antibody.

20 12.2. CYTOTOXICITY ASSAY USING THE ANTIBODY-HEMATOPORPHYRIN DIHYDRAZIDE CONJUGATE

25 In vitro cytotoxicity assays were carried out in 96 well U-bottom Costar tissue culture plates (Costar, Cambridge, MA). The target cells (MOLT-4, ATCC CRL 1582), were obtained from American Type Culture Collection, Rockville, MD as were control cells (Raji, ATCC CCL 86). The MOLT-4 cell line is a T-cell line derived from the human peripheral blood of a patient with acute lymphoblastic leukemia. The Raji cell line is a lymphoblastic-like cell line derived from a patient with Burkitt's lymphoma. The cells were washed 2 times with RPMI 1640 culture medium (10% Fetal Calf Serum, 2% Glutamine, 1% Penicillin-Streptomycin) (M.A. Bioproducts, Walkersville, MD) and diluted to a concentration of 10^5 cells/ml. The CYT-021 antibody-hematoporphyrin dihydrazide conjugate was filtered through a 0.45 micron syringe filter (Gelman, Ann Arbor, MI) and 1:10 dilutions of the conjugate were prepared.

30 One ml of cells were mixed with 1 ml of the conjugate or appropriate controls and were incubated in the dark for 2 hours in a humidified 37°C , 5% CO_2 incubator. The cells were washed three times with RPMI 1640 culture medium (maintaining dark conditions) and the pellets resuspended in RPMI 1640 medium. Aliquots of 10^4 or 10^5 cells (see Table IX) (in a volume of 100 μl) were plated in triplicate on each microtiter plate and duplicate plates were prepared. One set of microtiter plates were incubated in the dark for 24 hours as described above. The other set of microtiter plates was then incubated overnight as above while exposed to a standard fluorescent light source.

35 Viability of cells was then determined by measuring ^3H -thymidine (New England Nuclear, Boston, MA) uptake. The microtiter plates were centrifuged in a TJ-6 centrifuge (Beckman Instruments, Palo Alto, CA) for 5 minutes at 1500 rpm. The supernatants were removed and 100 μl of RPMI culture medium containing 1 μCi of ^3H -thymidine (New England Nuclear, Boston, MA) was added to each well. The cells were incubated for at least 4 hours in the CO_2 incubator before harvesting onto filter paper using a MASH (Skatron Inc., Sterling, VA). The filter paper was dissolved in 3 ml Aquasol-2 (New England Nuclear, Boston, MA) and counted on a LKB 1212 liquid scintillation counter.

45

50

55

TABLE IX

CYTOTOXICITY OF ANTIBODY-HEMATOPORPHYRIN
DIHYDRAZIDE CONJUGATE (Ab-Hd)

Cell Type	Ab-Hd mg/ml	% Cell Killing	
		Dark	Light
Molt-4	0	0	0
	0.05	15	99
	0.005	14	95
Raji	0	0	3
	0.05	0	7

As illustrated in Table IX, the percent of killing of target cells incubated with the Ab-Hd conjugate and exposed to light was close to 100 percent. Control cells incubated with the CYT-021 Antibody-hematoporphyrin-dihydrazide conjugate and kept in the dark incorporated maximum amounts of ^3H -thymidine and no significant mortality was observed.

13. EXAMPLES: PREPARATION OF ANTIBODY CONJUGATES VIA SULFHYDRYL ATTACHMENT

13.1. HYDRAZIDE-FICOLL

Ficoll 70 was obtained from Pharmacia Fine Chemicals, Inc. (Piscataway, NJ). The hydrazide-ficoll was prepared by the method described in Section 11.5.

13.2. (4-iodoacetyl)-aminobenzoic hydrazide-ficoll

Thirty milligrams of N-succinimidyl-(4-iodoacetyl)-aminobenzoate (SIAB, Pierce Chemical Co., Rockford, IL) were dissolved in 3 ml of acetonitrile. Six 0.48 ml aliquots of the SIAB solution were added to 20 ml of a 5 mg/ml solution of hydrazide-ficoll (prepared as described in Section 13.1) dissolved in 0.1 M sodium phosphate buffer, pH 7.0, at 30 minute intervals. Before the second addition of SIAB solution, 5 ml of tetrahydrofuran were added to the hydrazide-ficoll to clarify the solution. The reaction mixture was then stirred for 20 hours at 23-25°C. The organic solvents were removed by bubbling N_2 gas through the reaction mixture and the resultant cloudy solution was clarified by centrifugation. The clear supernatant was lyophilized. Excess SIAB was removed by extracting the dry powder with tetrahydrofuran and the excess solvent was removed by evaporation under reduced pressure. The dry powder was dissolved in 5 ml of water and dialyzed for 4 hours at 4°C. The (4-iodoacetyl)-aminobenzoic hydrazide-ficoll was stored frozen at -70°C and contained about 16 iodoacetyl groups per mole of hydrazide-ficoll.

13.3. (4-iodoacetyl)-aminobenzoic hydrazide ficoll-acetylthio-IgG

One milligram of mouse anti-N. gonorrhoeae monoclonal IgG was diluted into 0.25 ml of PBS, pH 7.4. The IgG solution was then reduced with 5 mM dithiothreitol for 30 minutes at 23-25°C. The reduced antibody was then passed over 1x19 cm Sephadex® G-50 column and eluted with 0.1 M tris-(hydroxymethyl)-aminomethane buffer, pH 8.0, containing 1mM ethylenediaminetetraacetic acid (Tris/EDTA). One milligram of (4-iodoacetyl)-aminobenzoic hydrazide-ficoll (prepared as described in Section 13.2) was added to the reduced antibody and the reaction mixture was incubated at 4°C for 16 hours to form an iodoacetyl-aminobenzoic hydrazide-ficoll-thio-IgG conjugate.

This is an example of the preparation of an antibody conjugate to which ^{153}Gd metal ion is complexed wherein the conjugate is formed by attachment of a single site linker at plurality of sites introduced at the sulfhydryl groups of antibodies. By analogous mechanisms, a therapeutic agent may be attached to an antibody or antibody fragment.

13.4. MALEIMIDE HYDRAZIDE FICOLL

Twenty-two milligrams of 4-(N-mal imidomethyl)-cyclohexane-1-carboxylic acid N-hydroxysuccinimide ester (SMCC, Sigma Chemical Co., St. Louis, MO) were dissolved in 3 ml of tetrahydrofuran. Six 0.5 ml aliquots of the SMCC solution were added to 20 ml of a 5 mg/ml solution of hydrazide-Ficoll (prepared as described in Section 13.1), dissolved in 0.1 M sodium phosphate buffer, pH 6.8, at 30 minute intervals. Two milliliters of tetrahydrofuran were added to the reaction mixture before the second and third additions of SMCC solution. The organic solvents were then removed by bubbling N₂ through the reaction mixture and the resultant cloudy solution was clarified by centrifugation. The clear supernatant was lyophilized and the excess SMCC was extracted with tetrahydrofuran. The organic solvent was then removed by evaporation under reduced pressure. The final produce contained about 15 moles of maleimide/mole of Ficoll. This compound can be used in the same way as the (4-iodoacetyl)-aminobenzoichydrazide-Ficoll prepared by the method of Section 13.2.

14. EXAMPLES: PREPARATION OF ERYTHROSIN DERIVATIVES

The following examples illustrate the novel derivatives of erythrosin which can be used as photoactivatable cytolytic agents (or photosensitizers) for *in vivo* therapy when specifically attached to an antibody molecule.

14.1. PREPARATION OF 5-ERYTHROSIN ISOTHIOCYANATE

Erythrosin 5-isothiocyanate (Aldrich Chemicals, Milwaukee, WI) was prepared according to the procedure of Moore and Garland (Biochemical Society Transactions, 1979, 7: 945-946) with certain modifications. The conversion of 5-amino erythrosin into the isothiocyanate was performed as follows: thiophosgene (0.34 g, 0.227 ml, 3.0 mmole) was added dropwise to a suspension of 5-amino erythrosin (1.2 g, 1.4 mmole) in toluene (20 ml) at 0 °C. After addition of the thiophosgene over 10 minutes, the solution was warmed to room temperature, then heated to reflux for 2 hours. Evaporation of the solvent gave a red solid which showed one major component by the technique of thin layer chromatography using a developing solvent composed of (silica gel, ethyl acetate: pyridine: acetic acid (E:P:A) (50:1:1; v:v:v). The weight of the product was 1.33 g, and the product showed a strong isothiocyanate band in the infrared spectrum at 2045 cm⁻¹.

14.2. PREPARATION OF 5-ERYTHROSIN THIOSEMICARBAZIDE

Anhydrous hydrazine (0.007 g, 0.007 ml, 0.22 mmole) was added to a solution of 5-erythrosin isothiocyanate (0.1 g, 0.11 mmole) in tetrahydrofuran (5 ml). The solution was stirred overnight and the precipitated solid filtered to give red crystals which showed absence of the thiocyanate group (2040 cm⁻¹) in the infrared spectrum.

14.3. PREPARATION OF N-(2-AMINOETHYL) ERYTHROSIN 5-THIOUREA

Erythrosin 5-isothiocyanate (0.45 g, 0.5 mmole) was dissolved in 20 ml of tetrahydrofuran and cooled to 0 °C. Ethylene diamine (0.3 g, 0.334 ml, 5.0 mmole) was added dropwise over ten minutes and the reaction stirred at room temperature overnight. Filtration of the solid red precipitate was followed by washing the tetrahydrofuran and drying at 80 °C under vacuum. The red solid weighed 0.52 g and had no isothiocyanate peak in the infrared at approximately 2040 cm⁻¹. This product was suspended in 5% HCl filtered and dried to give a red solid weighing 0.34 g.

14.4. PREPARATION OF ERYTHROSIN-5-HYDRAZIDE

Solid sodium nitrite (0.01 g, 0.15 mmole) was added to a solution of erythrosin-5-amine (0.1 g, 0.11 mmole) (prepared by the method of Moore and Garland, 1979, Biochemical Society Transactions 7: 945-946) in 10 ml of 6N HCl at 0 °C. The diazotizing solution was stirred for 3 hours at 0 °C and a solution of stannous chloride (0.1 g, 0.44 mole) in 2 ml of 3 M HCl was added. The red solution was stirred at room temperature for 3 hours and then filtered. The deep red precipitate was washed with water, and dried. The red product showed binding to aldehydic oxidized Sepharose beads at pH 8.8 but no binding to non-oxidized non-aldehydic Sepharose, indicating the presence of a hydrazine group.

14.5. PREPARATION OF FICOLL-HYDRAZIDE-ERYTHROSIN

Ficoll hydrazide (0.25 g 0.004 mmole, 0.23 meq. hydrazide) was dissolved in 40 ml of 50% ethanol: water. Erythrosin isothiocyanate (0.022 g, 0.025 mmole) was added and the solution stirred overnight. Dialysis against Na_2CO_3 , pH 9.0 for 5 days, followed by lyophilization gave a pink powder which was water-soluble and displayed a maximum wavelength of about 524 nm in pH 9 buffer.

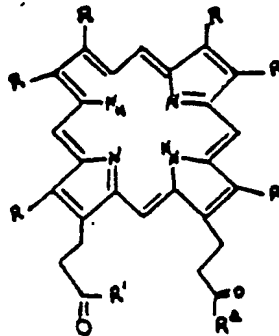
The invention described and claimed herein is not to be limited in scope by the specific embodiments herein disclosed, since these embodiments are intended as illustrations of several aspects of the invention. Any equivalent embodiments are intended to be within the scope of this invention. Indeed, various modifications of the invention in addition to those shown and described herein will become apparent to those skilled in the art from the foregoing description. Such modifications are also intended to fall within the scope of the appended claims.

Claims

15

1. An aqueous soluble antibody-therapeutic agent conjugate for a medical use, comprising : a therapeutic agent capable of acting as a photosensitizer, attached, either directly or via a linker, through a covalent bond to an antibody or antibody fragment to form an antibody-therapeutic agent conjugate having substantially the same immunoreactivity and immunospecificity as the unconjugated antibody or antibody fragment, wherein the covalent bond is selectively formed at a site located outside the antigen binding region of the antibody or antibody fragment and is formed between an amino group of the photosensitizer or linker and an aldehyde group of an oxidized carbohydrate moiety of an antibody or antibody fragment, and in which the therapeutic agent is a compound of the formula :

25

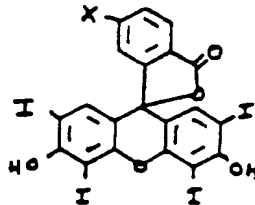


30

35

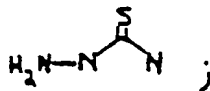
- wherein R is selected from the group consisting of an alkyl containing from 1 to 3 carbon atoms, a hydroxy alkyl containing from 1 to 3 carbon atoms, a carboxyl, an alkyl carboxyl in which the alkyl contains from 1 to 3 carbon atoms, a vinyl and an H, and R^1 and R^2 are NHNH_2 , or R^1 is OH and R^2 is NHNH_2 , or R^1 is NHNH_2 and R^2 is OH; or in which the therapeutic agent is a compound of the formula :

45

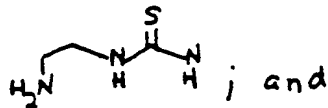


50

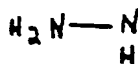
- wherein X is selected from the group consisting of



5

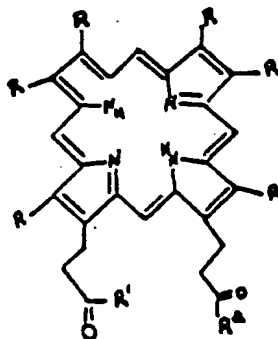


10



15

- 20 2. The antibody-therapeutic agent conjugate according to claim 1, wherein the antibody fragment is selected from the group consisting of Fab fragments, (Fab') fragments and half antibody molecules.
3. The antibody-therapeutic agent conjugate according to claim 1, wherein the antibody is a monoclonal antibody or a monoclonal antibody fragment.
- 25 4. The antibody-therapeutic agent conjugate according to claim 1, wherein the therapeutic agent is an amine containing porphyrin compound of the formula :



30

35

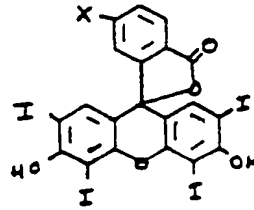
40

45 wherein R is selected from the group consisting of an alkyl containing from 1 to 3 carbon atoms, a hydroxy alkyl containing from 1 to 3 carbon atoms, a carboxyl, an alkyl carboxyl in which the alkyl contains from 1 to 3 carbon atoms, a vinyl and an H, and R¹ and R² are NHHN₂, or R¹ is OH and R² is NHHN₂, or R¹ is NHHN₂ and R₂ is OH.

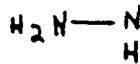
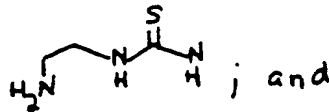
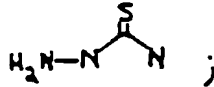
- 50 5. The antibody-therapeutic agent conjugate according to claim 1, wherein the therapeutic agent is an amine containing erythrosin-derivative of the formula :

50

55

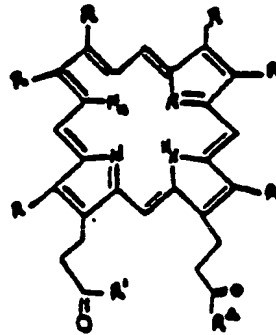


10 wherein X is selected from the group consisting of



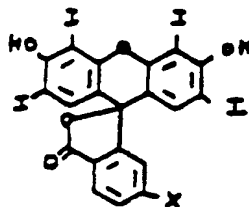
Revendications

- 35 1. Conjugué soluble dans l'eau d'anticorps et d'agent thérapeutique pour utilisation médicale, comprenant: un agent thérapeutique apte à agir comme photosensibilisateur, fixé soit directement soit par l'intermédiaire d'un agent de liaison, par une liaison covalente à un anticorps ou fragment d'anticorps pour former un conjugué d'anticorps et d'agent thérapeutique ayant pratiquement la même immunoréactivité et la même immunospécificité que l'anticorps ou fragment d'anticorps non conjugué, dans lequel la liaison covalente est formée sélectivement sur un site situé hors de la région de fixation à l'antigène d'anticorps ou fragment d'anticorps et est formée entre un groupe amino du photosensibilisateur ou de l'agent de liaison et un groupe aldéhyde d'une unité glucidique oxydée d'un anticorps ou fragment d'anticorps, et dans lequel l'agent thérapeutique est un composé de formule:
- 40
- 45



où R est choisi parmi les groupes alkyle contenant de 1 à 3 atomes de carbone, hydroxy alkyle contenant de 1 à 3 atomes de carbone, carboxyle, alkyl carboxyle dans lequel le groupe alkyle contient de 1 à 3 atomes de carbone, vinyle et H, et R¹ et R² sont NHHN₂, ou R¹ est OH et R² est NHHN₂, ou R¹ est NHHN₂ et R² est OH; ou dans lequel l'agent thérapeutique est un composé de formule:

5

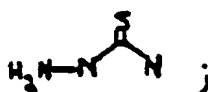


10

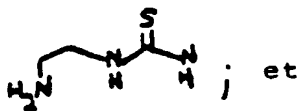
15

où X est choisi parmi

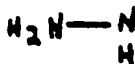
20



25



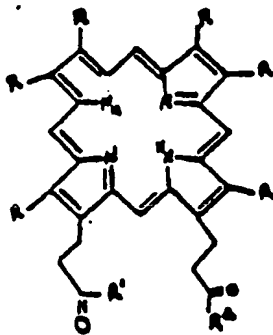
30



35

2. Conjugué d'anticorps et d'agent thérapeutique selon la revendication 1, dans lequel le fragment d'anticorps est choisi parmi les fragments Fab, les fragments (Fab') et les demi-molécules d'anticorps.
- 40 3. Conjugué d'anticorps et d'agent thérapeutique selon la revendication 1, dans lequel l'anticorps est un anticorps monoclonal ou un fragment d'anticorps monoclonal.
4. Conjugué d'anticorps et d'agent thérapeutique selon la revendication 1, dans lequel l'agent thérapeutique est un composé de porphyrine contenant une amine de formule:

45



50

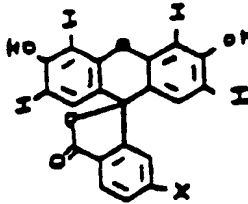
55

où R est choisi parmi les groupes alkyle contenant de 1 à 3 atomes de carbone, hydroxy alkyle contenant de 1 à 3 atomes de carbone, carboxyle, alkyl carboxyle dans lequel le groupe alkyle contient de 1 à 3 atomes de carbone, vinyle et H, et R¹ et R² sont NHHN₂, ou R¹ est OH et R² est NHHN₂, ou R¹ est NHHN₂ et R² est OH.

6

5. Conjugué d'anticorps et d'agent thérapeutique selon la revendication 1, dans lequel l'agent thérapeutique est un dérivé d'érythrosine contenant une amine de formule:

10



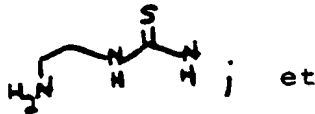
15

où X est choisi parmi

20

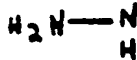


25



30

35



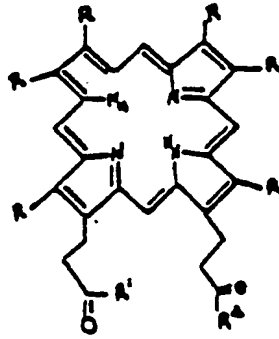
40 Patentansprüche

1. Eine wasserlösliche therapeutische Antikörpermittelverbindung für medizinische Zwecke, bestehend aus einem therapeutischen Mittel, das als Lichtsensibilisator wirken kann, und entweder direkt oder über eine Zwischenkette durch eine Kovalenzbindung einem Antikörper oder Antikörperfragment zur Bildung einer therapeutischen Antikörpermittelverbindung angegliedert wird, welches im wesentlichen dieselbe Immunisierungsreaktivität und besondere Immunisierungswirksamkeit wie der nicht-gekoppelte Antikörper oder das nicht-gekoppelte Antikörperfragment besitzt, wobei die Kovalenzbindung an einer Stelle selektiv gebildet ist, welche sich ausserhalb des antigenen Bindungsbereichs des Antikörpers oder des Antikörperfragments befindet und zwischen einer Aminogruppe des Lichtsensibilisators oder der Zwischenkette und einer Aldehydgruppe eines oxidierten Kohlenhydratanteils eines Antikörpers oder Antikörperfragments gebildet wird, und in der das therapeutische Mittel eine Verbindung mit folgender Formel ist:

55

5

10

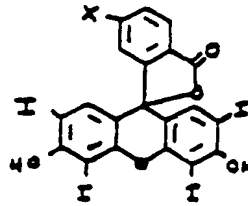


15

worin R aus der Gruppe selektiert wird, die aus einem Alkyl mit 1 bis 3 Kohlenstoffatomen, aus einem Hydroxiealkyl mit 1 bis 3 Kohlenstoffatomen, aus einem Karboxyl und aus einem Alkylkarboxyl besteht, in welchem das Alkyl 1 bis 3 Kohlenstoffatome, ein Vinyl und ein H, und wobei R¹ und R² NHNH₂ sind, oder R¹ OH und R² NHNH₂ ist, oder R¹ NHNH₂ und R² OH ist; oder in dem das therapeutische Mittel eine Verbindung folgender Formel ist:

20

25



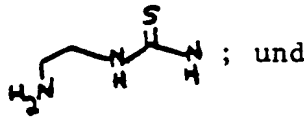
30

wobei X aus der Gruppe selektiert wird, die aus

35



40



45



50

2. Therapeutische Antikörpermittelverbindung gemäss Anspruch 1, worin das Antikörperfragment aus der Gruppe selektiert wird, die aus Fab-Fragmenten, (Fab')-Fragmenten und Halb-Antikörpermolekülen besteht.
3. Therapeutische Antikörpermittelverbindung gemäss Anspruch 1, worin der Antikörper ein monoklonales Antikörper oder ein monoklonales Antikörperfragment ist.

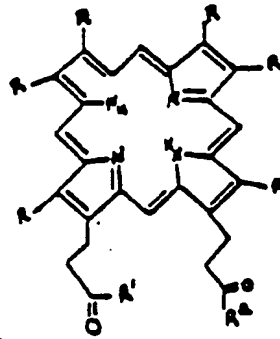
55

4. Therapeutische Antikörpermittelverbindung gemäss Anspruch 1, worin das therapeutische Mittel ein Amin ist, das eine Phorphyrinverbindung folgender Formel enthält:

5

10

15

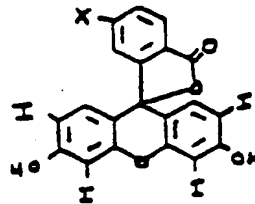


wobei R aus der Gruppe selektiert wird, die aus einem Alkyl besteht, das 1 bis 3 Kohlenstoffatom enthält, und aus einem Hydroxiealkyl besteht, das 1 bis 3 Kohlenstoffatome enthält, und aus einem Karboxyl sowie einem Alkylkarboxyl besteht, in denen das Alkyl 1 bis 3 Kohlenstoffatome, ein Vinyl und ein H enthält, und R¹ und R² NHNH₂ sind, oder R¹ OH und R² NHNH₂ ist, oder R¹ NHNH₂ und R² OH ist.

5. Therapeutische Antikörpermittelverbindung gemäss Anspruch 1, worin das therapeutische Mittel ein Amin ist, welches ein Erythrosinderivat mit folgender Formel enthält:

30

35

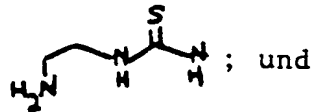


worin X aus der Gruppe selektiert wird, die aus

40



45



50



55

FIG. 1

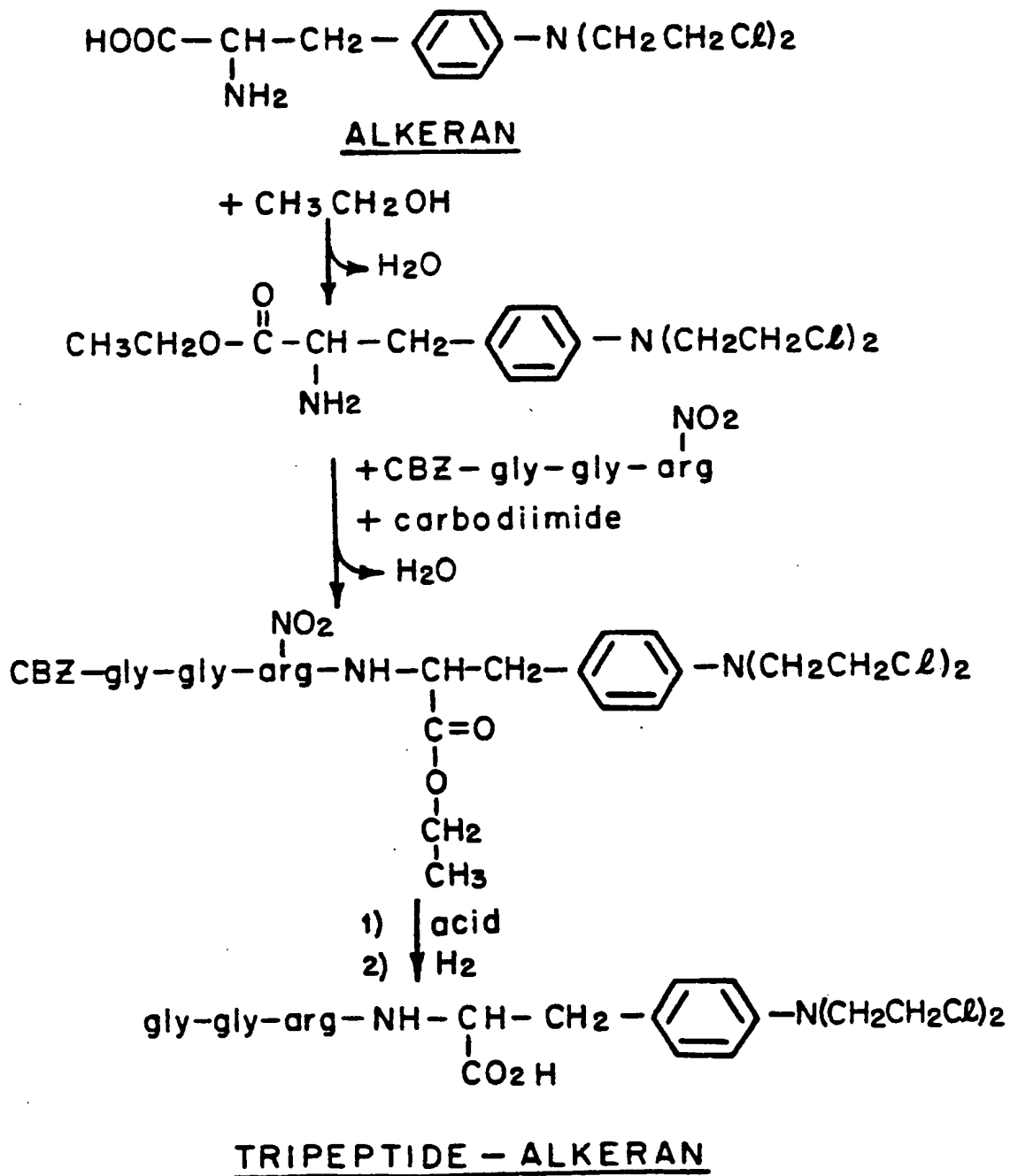
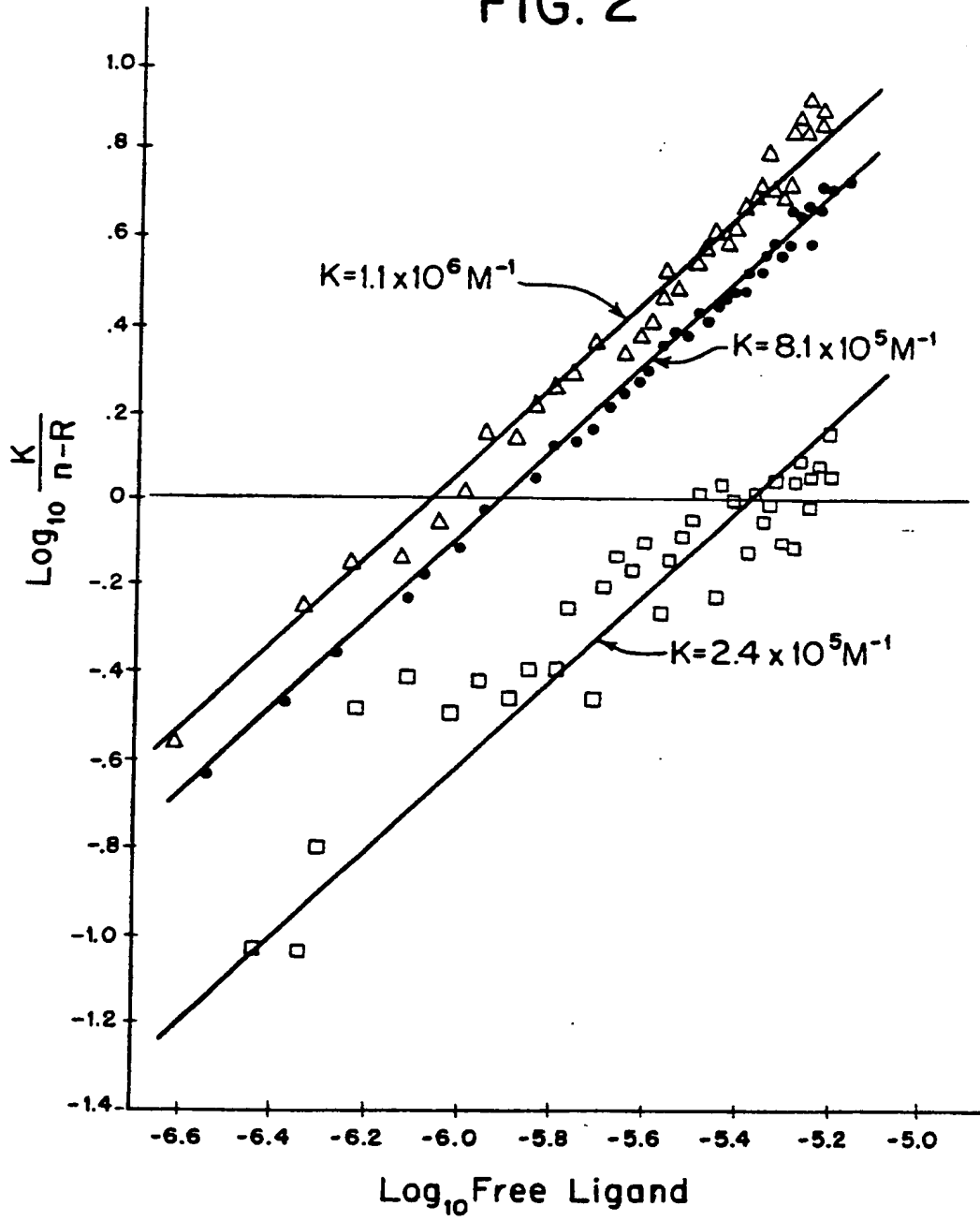


FIG. 2



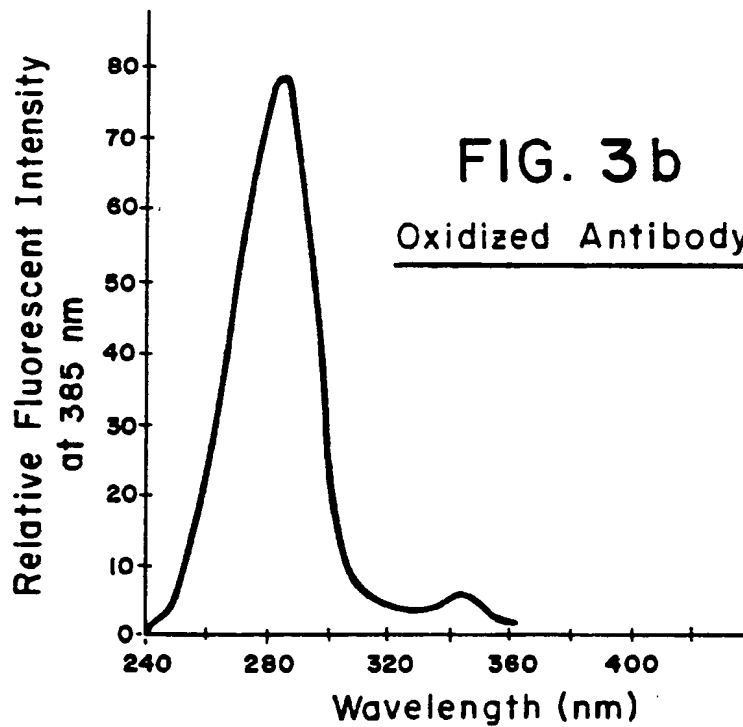
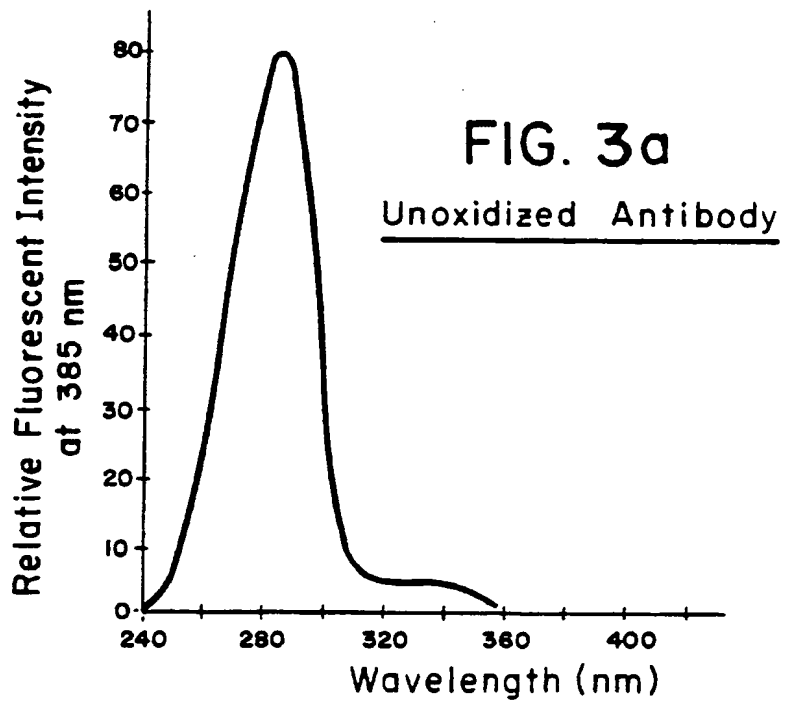


FIG. 4

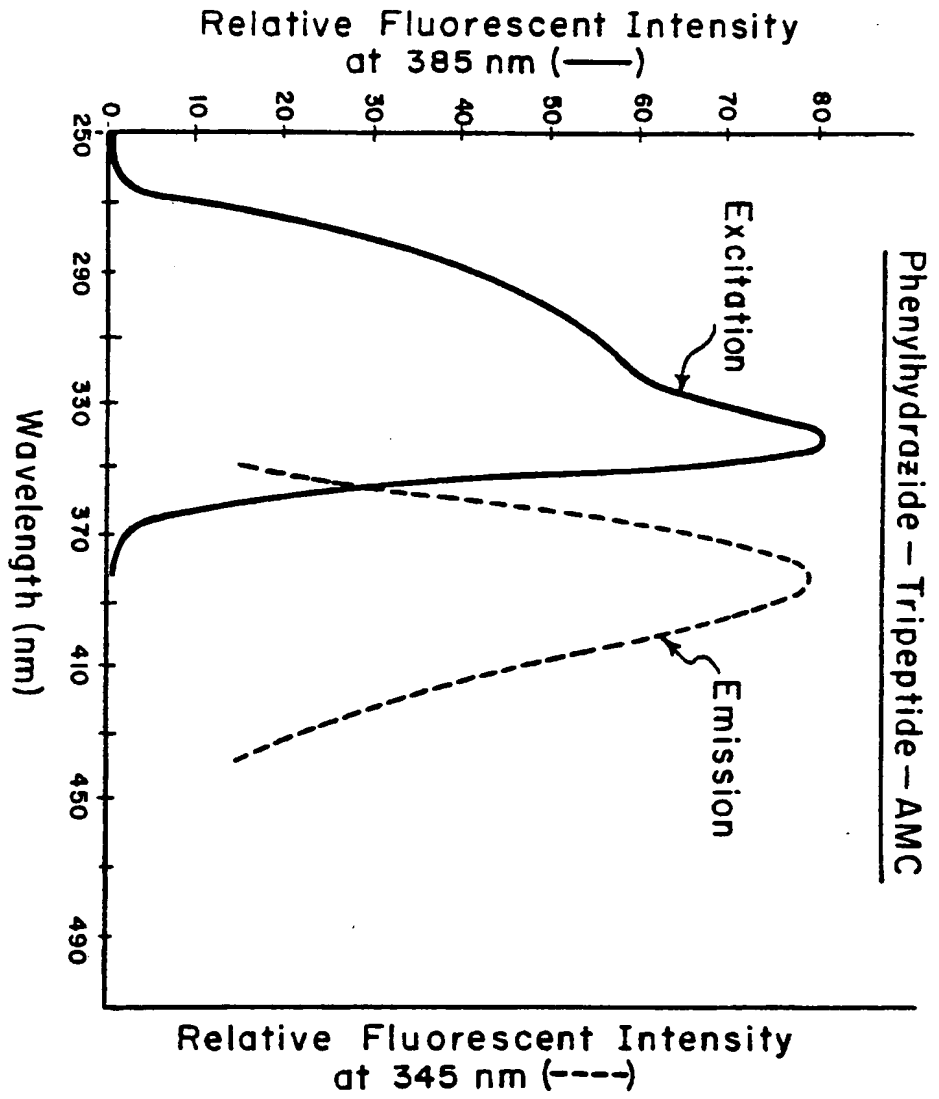


FIG. 5

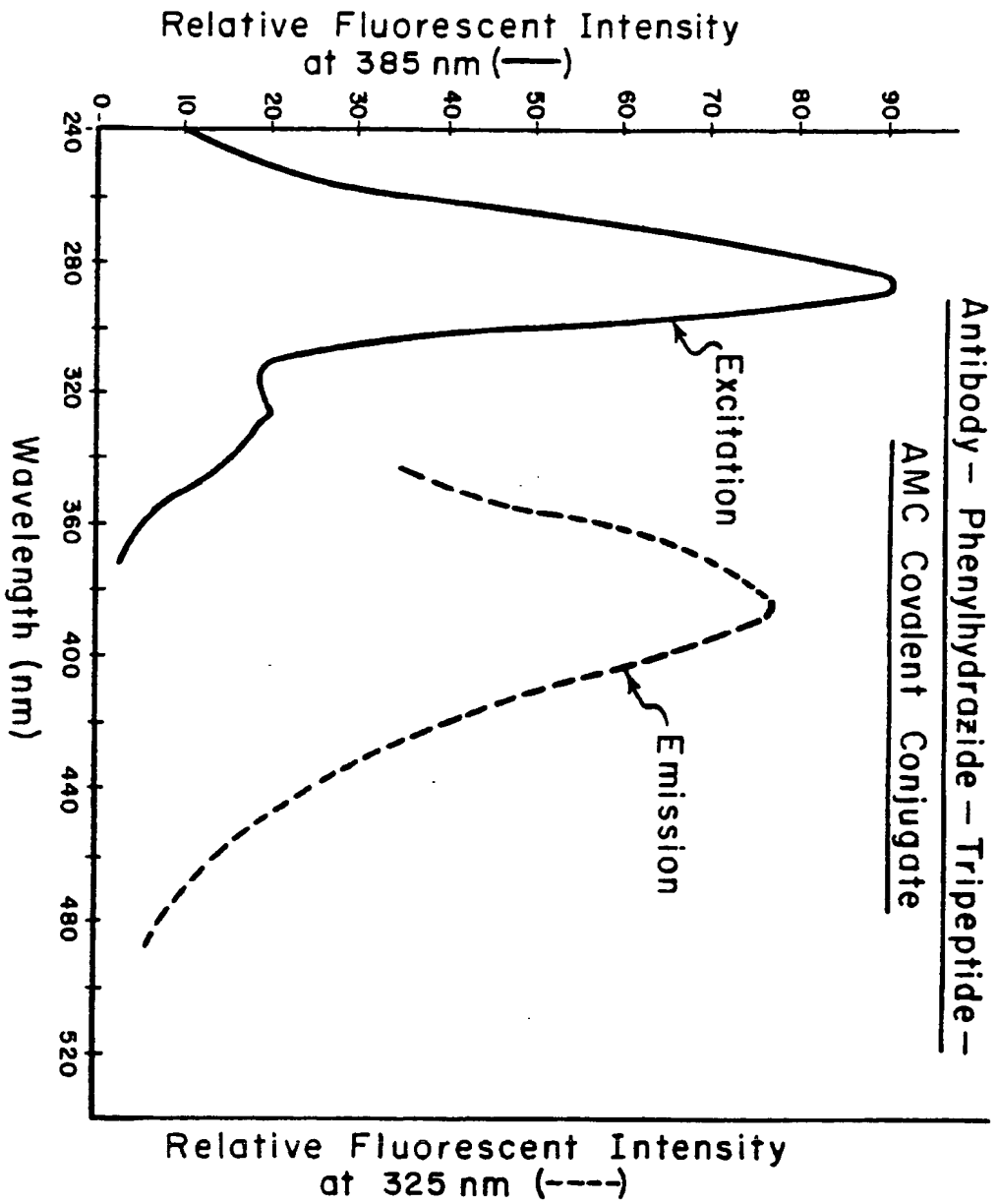


FIG. 6

